

Catalog No.	Accessories	Drawings	Catalog No.	Accessories	Drawings					(D)	
E-2000	Acc.	PDF DXF	N/A	N/A	N/A	21.00"	30.25"	24.19"	23.87"	20.50"	119
E-2003	Acc.	PDF DXF	N/A	N/A	N/A	42.00"	51.25"	24.19"	23.87"	20.50"	168
E-2004	Acc.	PDF DXF	N/A	N/A	N/A	52.50"	61.75"	24.19"	23.87"	20.50"	195
E-2005	Acc.	PDF DXF	N/A	N/A	N/A	61.25"	70.50"	24.19"	23.87"	20.50"	216
E-2006	Acc.	PDF DXF	N/A	N/A	N/A	70.00"	79.25"	24.19"	23.87"	20.50"	233
E-2007	Acc.	PDF DXF	N/A	N/A	N/A	78.75"	88.00"	24.19"	23.87"	20.50"	260
E-2008	Acc.	PDF DXF	E-2024	Acc.	PDF DXF	21.00"	30.25"	24.19"	27.37"	24.00"	129
E-2011	Acc.	PDF DXF	E-2027	Acc.	PDF DXF	42.00"	51.25"	24.19"	27.37"	24.00"	179
E-2012	Acc.	PDF DXF	E-2028	Acc.	PDF DXF	52.50"	61.75"	24.19"	27.37"	24.00"	215
E-2013	Acc.	PDF DXF	E-2029	Acc.	PDF DXF	61.25"	70.50"	24.19"	27.37"	24.00"	234
E-2014	Acc.	PDF DXF	E-2030	Acc.	PDF DXF	70.00"	79.25"	24.19"	27.37"	24.00"	244
E-2015	Acc.	PDF DXF	E-2031	Acc.	PDF DXF	78.75"	88.00"	24.19"	27.37"	24.00"	268
E30-2000	Acc.	PDF DXF	N/A	N/A	N/A	21.00"	30.25"	24.19"	32.62"	29.25"	150
E30-2003	Acc.	PDF DXF	N/A	N/A	N/A	42.00"	51.25"	24.19"	32.62"	29.25"	217
E30-2004	Acc.	PDF DXF	N/A	N/A	N/A	52.50"	61.75"	24.19"	32.62"	29.25"	248
E30-2005	Acc.	PDF DXF	N/A	N/A	N/A	61.25"	70.50"	24.19"	32.62"	29.25"	259
E30-2006	Acc.	PDF DXF	N/A	N/A	N/A	70.00"	79.25"	24.19"	32.62"	29.25"	303
E30-2007	Acc.	PDF DXF	N/A	N/A	N/A	78.75"	88.00"	24.19"	32.62"	29.25"	307

[DXF](#) Autocad DXF Specifications File
(Requires CAD software such as AutoCAD)

[PDF](#) Adobe PDF Specifications File



[Download PDF Viewer](#)

PART NAME SERIES 2000 UPRIGHT CABINET RACK

PART No.

E-2000 TO E-2015

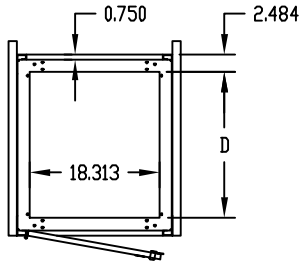
REV. DATE 1-2-02

FINISH:

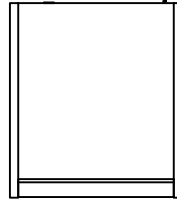
FRAME ASSEMBLY, SIDES,
DOOR & TOP COVER _____ GRAY TEXTURE OR
ROYAL BLUE TEXTURE
PANEL MOUNTING RAILS _____ SMOOTH BLACK
FRONT TOP TRIM _____ METALLIC GRAY

MATERIAL:

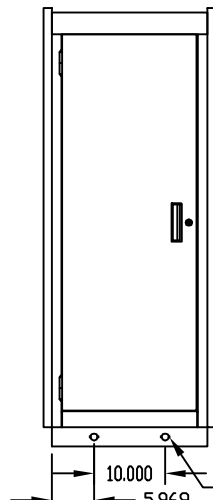
PANEL MOUNTING RAILS _____ 12 GA. STEEL
FRAME TOP, BASE ASSEMBLY,
FILLERS & VERTICAL RAILS _____ 14 GA. STEEL
RAIL SUPPORTS _____ 16 GA. STEEL
TOP COVER & SIDES _____ 18 GA. STEEL
DOOR & FRONT TOP TRIM _____ 20 GA. STEEL



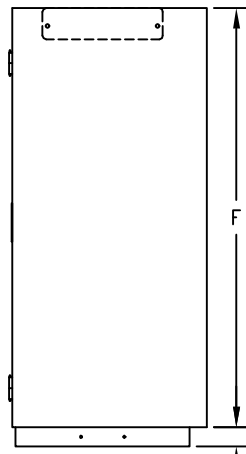
TOP VIEW
(LESS TOP COVER
& FRONT TOP TRIM)



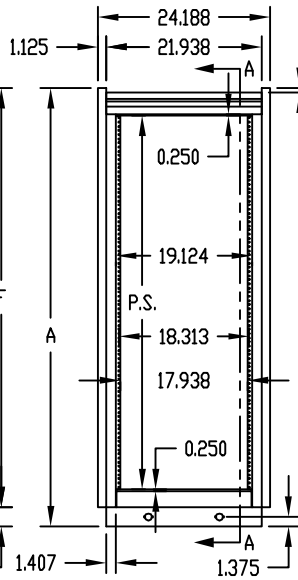
TOP VIEW



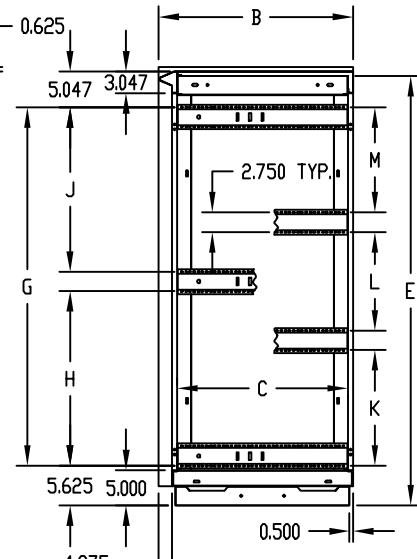
REAR VIEW



LEFT SIDE VIEW



FRONT VIEW

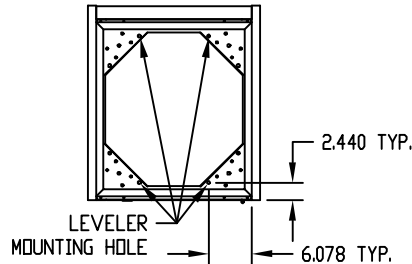


SECTION 'A-A'
(LESS PANEL MTG. RAILS)

PANEL MOUNTING RAILS (FRONT & REAR)
ARE TAPPED #10-32 DN E.I.A. UNIVERSAL
SPACING AND ARE FULLY ADJUSTABLE.

BOTTOM PIERCED FOR MOUNTING RC-7758 CASTERS.

LOAD RATING: 1200 LBS. MAX.



BOTTOM VIEW

* DISCONTINUED

PART No.	P.S.	A	B	C	D	E	F	G	H	J	K	L	M
E-2000	21.000	30.250	23.875	20.500	17.000	29.000	27.500	18.937	—	—	—	—	—
* E-2001	31.500	40.750	—	—	—	39.500	38.000	29.437	—	—	—	—	—
* E-2002	35.000	44.250	—	—	—	43.000	41.500	32.937	—	—	—	—	—
E-2003	42.000	51.250	—	—	—	50.000	48.500	—	19.281	17.906	—	—	—
E-2004	52.500	61.750	—	—	—	60.500	59.000	—	24.531	23.156	—	—	—
E-2005	61.250	70.500	—	—	—	69.250	67.750	—	28.906	27.531	—	—	—
E-2006	70.000	79.250	—	—	—	78.000	76.500	—	33.281	31.906	—	—	—
E-2007	78.750	88.000	23.875	20.500	17.000	86.750	85.250	—	—	—	25.125	22.312	23.750
E-2008	21.000	30.250	27.375	24.000	20.500	29.000	27.500	18.937	—	—	—	—	—
* E-2009	31.500	40.750	—	—	—	39.500	38.000	29.437	—	—	—	—	—
* E-2010	35.000	44.250	—	—	—	43.000	41.500	32.937	—	—	—	—	—
E-2011	42.000	51.250	—	—	—	50.000	48.500	—	19.281	17.906	—	—	—
E-2012	52.500	61.750	—	—	—	60.500	59.000	—	24.531	23.156	—	—	—
E-2013	61.250	70.500	—	—	—	69.250	67.750	—	28.906	27.531	—	—	—
E-2014	70.000	79.250	—	—	—	78.000	76.500	—	33.281	31.906	—	—	—
E-2015	78.750	88.000	27.375	24.000	20.500	86.750	85.250	—	—	—	25.125	22.312	23.750