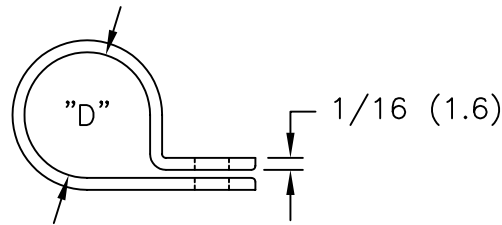
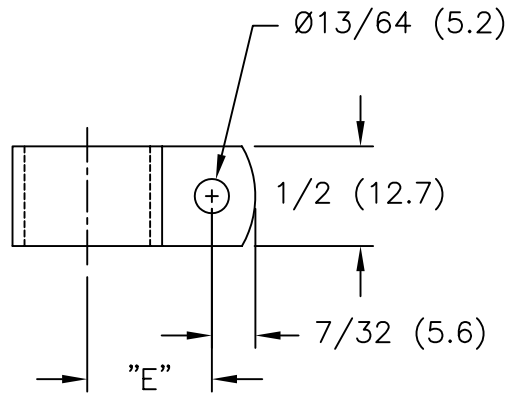


NYLON 6/6 (RMS-01) COLOR: NATURAL PART NO.	FLAME RET. (RMS-75) COLOR: NATURAL PART NO.	NYLON 6/6 (RMS-49) COLOR: BLACK PART NO.	"D" HOLDING DIA.	"E" REF.
N2B	-	N2B-BLK	1/8 (3.2)	21/64 (8.3)
N3B	N3B-75	N3B-BLK	3/16 (4.8)	25/64 (9.9)
N4B	N4B-75	N4B-BLK	1/4 (6.4)	27/64 (10.7)
N5B	N5B-75	N5B-BLK	5/16 (7.9)	29/64 (11.5)
N6B	N6B-75	N6B-BLK	3/8 (9.5)	31/64 (12.3)
N7B	-	N7B-BLK	7/16 (11.1)	17/36 (13.5)
N8B	N8B-75	N8B-BLK	1/2 (12.7)	9/16 (14.3)
N9B	-	N9B-BLK	9/16 (14.3)	19/32 (15.0)
N10B	N10B-75	N10B-BLK	5/8 (15.9)	5/8 (15.9)
N11B	-	N11B-BLK	11/16 (17.5)	21/32 (16.6)
N12B	-	N12B-BLK	3/4 (19.1)	49/64 (19.5)
N14B	-	N14B-BLK	7/8 (22.2)	13/16 (20.6)
N16B	-	N16B-BLK	1 (25.4)	29/32 (23.0)
N18B	-	N18B-BLK	1-1/8 (28.6)	31/32 (24.6)



NOTES:

- UV STABILIZED NYLON (RMS-46)
COLOR: BLACK,
AVAILABLE BY SPECIAL ORDER ONLY.
TO ORDER, ADD "-UVB" TO PART NO.

J	UPDATED TABLE AND NOTES	SM 06.24.02
I	REMOVED N12B-75 THRU N-18B-75	DLC 10.11.01
H	DEL. TABLE COLUMN, ADDED NOTE 1. & CHANGED FILE NO.	SM 09.28.01
G	MAT'L RMS-19 CHANGED TO RMS-75	J.L. 11.20.98
F	PART N19B-BLK REMOVED	J.L. 9.15.97
E	NEW PART NUM. & ADDED - IN CHART	J.B. 04.19.94
D	RMS NO. & F.R. COL. ADDED TO TABLE	J.B. 04.19.94
C	COLUMNS BLACK & BLACK/UV ADDED	P.B. 04.19.94
B	DIM 7.32 (5.6) WAS .218 (5.6)	P.B. 04.19.94
A	DIM. 13/64 WAS 11/64	R.T. 04.19.94
R E V	DESCRIPTION	ENGR DATE

TITLE: CABLE CLAMP, NB/NB-75/NB-BLK SERIES



DWG IN
IN (MM)

FINAL

TOLERANCES UNLESS NOTED .XX=±.010 .XXX=±.005 FRAC=±1/64 ANG=±1°	FILE # NB	DWN: J.B.	APP:	PART # SEE TABLE	PRINT TYPE CA
	MAT'L: SEE NOTES AND TABLE	DT: 11-10-95	DT:		
	RE: RICHCO, INC.	RICHCO INC. PO BOX 804238, CHICAGO, 60680 (773) 539-4060			