

Customer Information Sheet

DRAWING No.: D73064-01

SHEET 2 OF 2

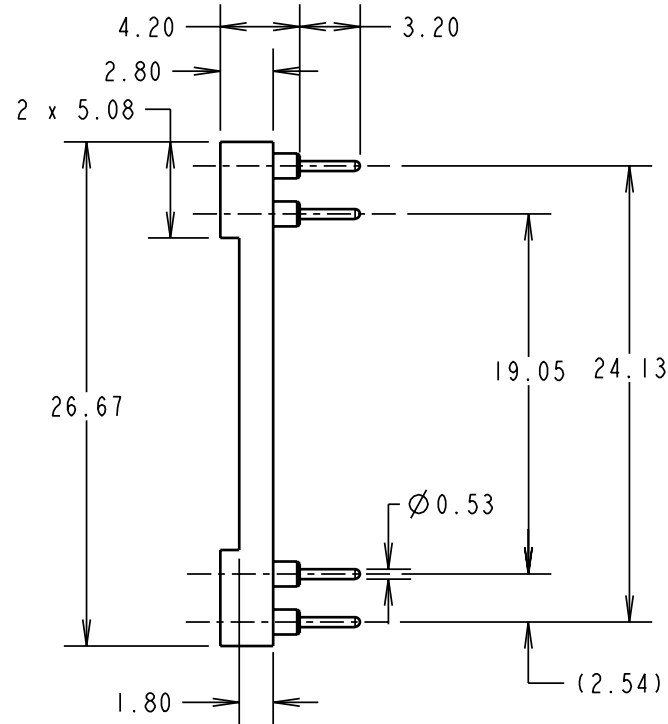
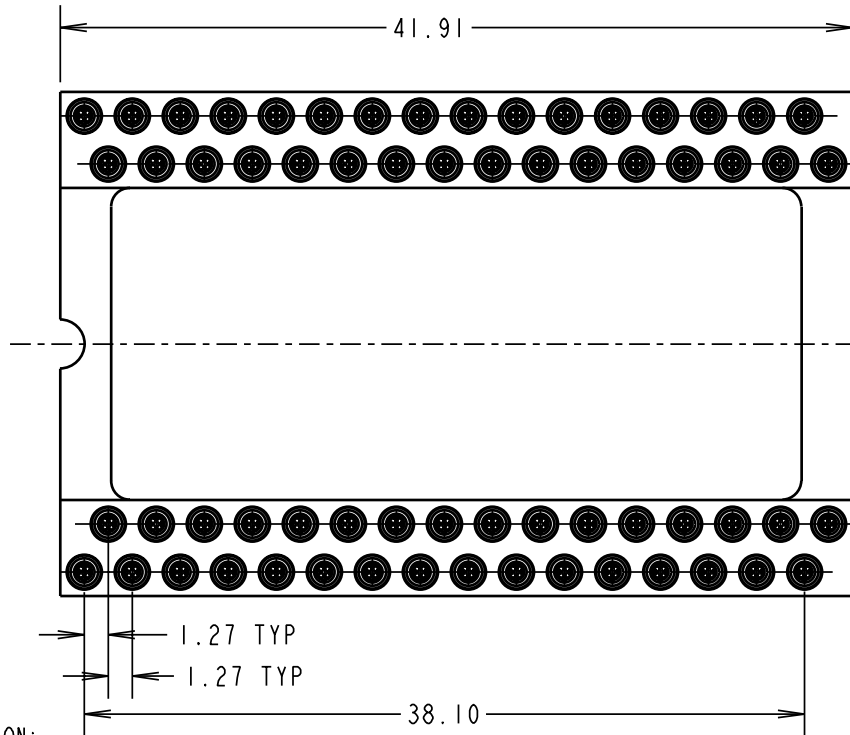
IF IN DOUBT - ASK

©

NOT TO SCALE

THIRD ANGLE PROJECTION

ALL DIMENSIONS IN mm



SPECIFICATION:

MATERIAL:
 MOULDING = GLASS-FILLED POLYESTER UL94V-0, BLACK
 CONTACT SHELL = BRASS
 CONTACT CLIP = BERYLLIUM COPPER

FINISH:
 CONTACT SHELL = 5µ 90/10 TIN/LEAD
 CONTACT CLIP = GOLD

ELECTRICAL:
 CURRENT RATING = 1A MAX
 VOLTAGE RATING = 100V AC, 150V DC
 CONTACT RESISTANCE = 10 MILLIOHMS MAX
 INSULATION RESISTANCE = 10,000 MEGOHMS MIN
 DIELECTRIC STRENGTH = 1,000V AC MIN

MECHANICAL:

INSERTION FORCE = 0.6N (Ø0.46mm GAUGE)
 WITHDRAWAL FORCE = 0.3N (Ø0.46mm GAUGE)
 DURABILITY = 100 CYCLES MIN

ENVIRONMENTAL:
 OPERATING TEMPERATURE = -55°C TO +125°C

PACKING:
 TUBE

NOTES:

1. RECOMMENDED PCB MOUNTING HOLE SIZE = Ø0.80mm.
2. MAXIMUM PIN LENGTH = 3.70mm.
3. MAXIMUM CONTACT DEPTH = 2.40mm.
4. RECOMMENDED MATING PIN SIZE = Ø.53-0.41mm.

JAE	5	27.08.03	7572
NAME	ISS.	DATE	C/NOTE
APPROVED: P. COLLINS			
CHECKED: W. J. BOURNE			
DRAWN: K. SHIER			
CUSTOMER REF.:			
ASSEMBLY DRG:			



HARWIN INC U.S.A. TEL: (812) 542 2546 FAX: (812) 542 2541	HARWIN PLC U.K. TEL: 023 9231 4545 FAX: 023 9231 4590	HARWIN PTE SINGAPORE TEL: 65 6779 4909 FAX: 65 6779 3868
---	---	--

THIS DRAWING AND ANY INFORMATION OR DESCRIPTIVE MATTER SET OUT HEREON ARE CONFIDENTIAL AND COPYRIGHT PROPERTY OF THE HARWIN GROUP AND MUST NOT BE DISCLOSED, LOANED, COPIED OR USED FOR MANUFACTURING, TENDERING OR FOR ANY OTHER PURPOSE WITHOUT THEIR WRITTEN PERMISSION.

TOLERANCES
 X. = ±1mm
 X.X = ±0.25mm
 X.XX = ±0.10mm
 X.XXX = ±0.01mm

ANGLES = ±5°
 UNLESS STATED

MATERIAL:
 SEE ABOVE

FINISH:
 SEE ABOVE

S/AREA:
 mm²

TITLE:
 64-WAY QUAD IN LINE
 I.C. SOCKET ASSEMBLY

DRAWING NUMBER:
 D73064-01

SHT
 2
 OF
 2