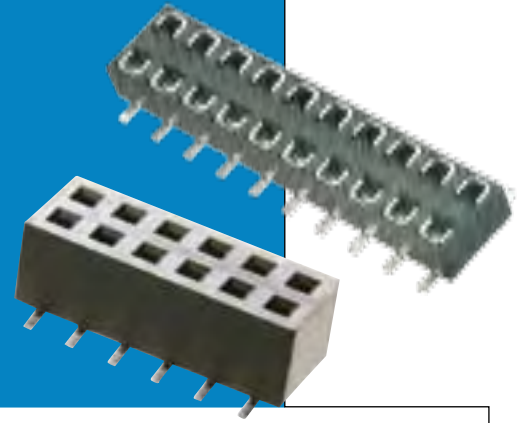


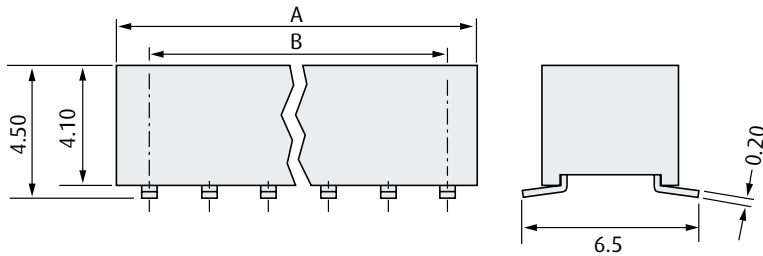
M22 Connectors

Vertical SMT Female Connectors

- ❖ Dual entry socket can be used in either top or bottom entry applications and has locating pegs to ensure correct positioning onto the board.
- ❖ Suitable for use with male connectors shown on pages 92-94 and 96-99.
- ❖ Twin beam contact for cost-effective reliability.

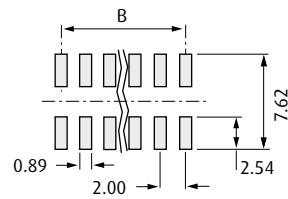


SMT FEMALE – 4.50mm HEIGHT



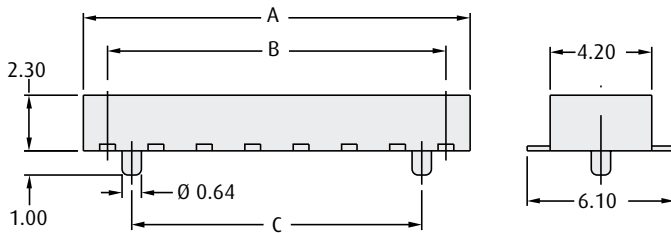
CALCULATION

A	$B + 2.50$
B	$2.00 \times (\text{No. of ways per row} - 1)$



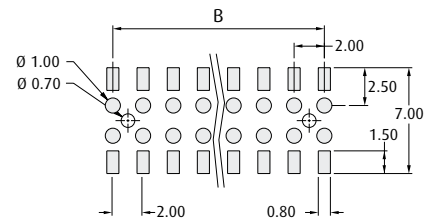
Recommended PC Board Patterns

DUAL ENTRY SMT FEMALE – 2.30mm HEIGHT



CALCULATION

A	$2.00 \times \text{No. of ways per row}$
B	$2.00 \times (\text{No. of ways per row} - 1)$
C	$B - 2.00$



Recommended PC Board Patterns

HOW TO ORDER

M22 - 63 X XX XX

SERIES CODE

CONNECTOR TYPE

4	DIL Female, 4.5mm high
6	DIL Female, 2.3mm high

FINISH

42	Gold + Tin	
46	Tin (M22-636 only)	

NO. OF WAYS PER ROW

03 to 32

All dimensions in mm.

www.harwin.com

2mm (.080") PITCH

