

Octal buffer/line driver (3-State)

74ABT244

FEATURES

- Octal bus interface
- 3-State buffers
- Output capability: +64mA/−32mA
- Latch-up protection exceeds 500mA per Jedec Std 17
- ESD protection exceeds 2000 V per MIL STD 883 Method 3015 and 200 V per Machine Model
- Power-up 3-State
- Live insertion capacity
- Inputs are disabled during 3-State mode

DESCRIPTION

The 74ABT244 high-performance BiCMOS device combines low static and dynamic power dissipation with high speed and high output drive.

The 74ABT244 device is an octal buffer that is ideal for driving bus lines. The device features two Output Enables (1OE, 2OE), each controlling four of the 3-State outputs.

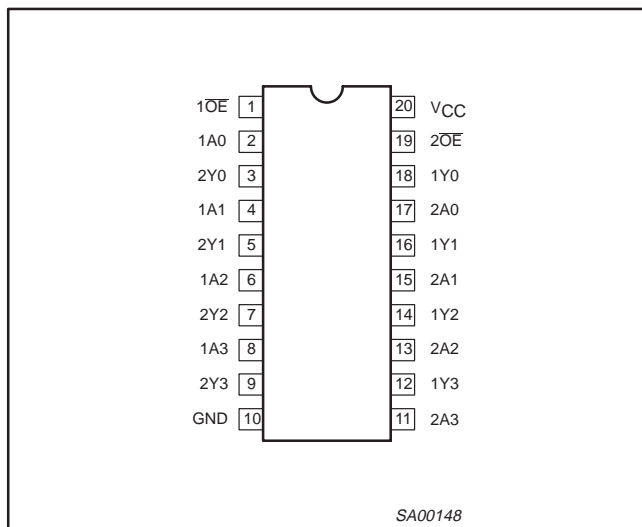
QUICK REFERENCE DATA

| SYMBOL | PARAMETER | CONDITIONS T _{amb} = 25°C; GND = 0V | TYPICAL | UNIT |
|--------------------------------------|-------------------------------|--|---------|------|
| t _{PLH} t _{PHL} | Propagation delay An to Yn | C _L = 50pF; V _{CC} = 5V | 2.9 | ns |
| C _{IN} | Input capacitance | V _I = 0V or V _{CC} | 4 | pF |
| C _{OUT} | Output capacitance | Outputs disabled; V _O = 0V or V _{CC} | 7 | pF |
| I _{CCZ} | Total supply current | Outputs disabled; V _{CC} = 5.5V | 50 | µA |

ORDERING INFORMATION

| PACKAGES | TEMPERATURE RANGE | OUTSIDE NORTH AMERICA | NORTH AMERICA | DWG NUMBER |
|-----------------------------|-------------------|-----------------------|---------------|------------|
| 20-Pin Plastic DIP | −40°C to +85°C | 74ABT244 N | 74ABT244 N | SOT146-1 |
| 20-Pin plastic SO | −40°C to +85°C | 74ABT244 D | 74ABT244 D | SOT163-1 |
| 20-Pin Plastic SSOP Type II | −40°C to +85°C | 74ABT244 DB | 74ABT244 DB | SOT339-1 |
| 20-Pin Plastic TSSOP Type I | −40°C to +85°C | 74ABT244 PW | 74ABT244PW DH | SOT360-1 |

PIN CONFIGURATION



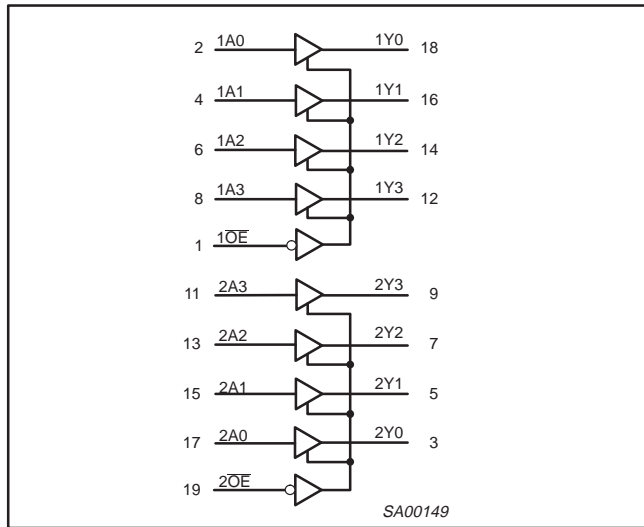
PIN DESCRIPTION

| PIN NUMBER | SYMBOL | NAME AND FUNCTION |
|----------------|-----------------|-------------------------|
| 2, 4, 6, 8 | 1A0 – 1A3 | Data inputs |
| 11, 13, 15, 17 | 2A0 – 2A3 | Data inputs |
| 18, 16, 14, 12 | 1Y0 – 1Y3 | Data outputs |
| 9, 7, 5, 3 | 2Y0 – 2Y3 | Data outputs |
| 1, 19 | 1OE, 2OE | Output enables |
| 10 | GND | Ground (0V) |
| 20 | V _{CC} | Positive supply voltage |

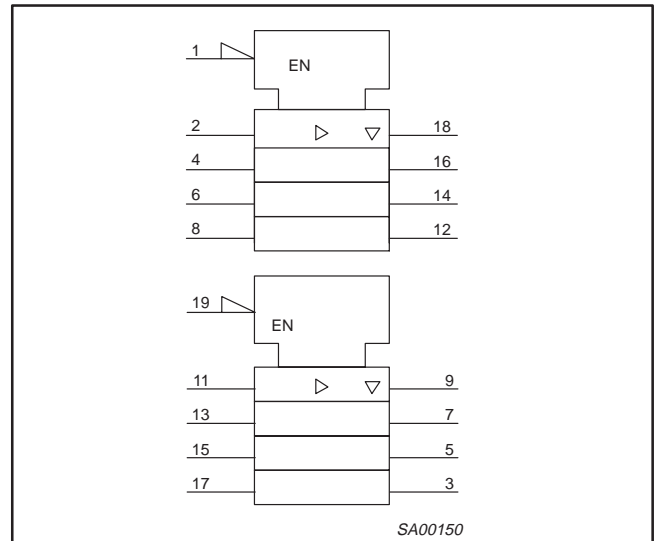
Octal buffer/line driver (3-State)

74ABT244

LOGIC SYMBOL



LOGIC SYMBOL (IEEE/IEC)



FUNCTION TABLE

| INPUTS | | | | OUTPUTS | |
|--------|-----|-----|-----|---------|-----|
| 1OE | 1An | 2OE | 2An | 1Yn | 2Yn |
| L | L | L | L | L | L |
| L | H | L | H | H | H |
| H | X | H | X | Z | Z |

H = High voltage level
 L = Low voltage level
 X = Don't care
 Z = High impedance "off" state

ABSOLUTE MAXIMUM RATINGS^{1, 2}

| SYMBOL | PARAMETER | CONDITIONS | RATING | UNIT |
|------------------|--------------------------------|-----------------------------|--------------|------|
| V _{CC} | DC supply voltage | | -0.5 to +7.0 | V |
| I _{IK} | DC input diode current | V _I < 0 | -18 | mA |
| V _I | DC input voltage ³ | | -1.2 to +7.0 | V |
| I _{OK} | DC output diode current | V _O < 0 | -50 | mA |
| V _{OUT} | DC output voltage ³ | output in Off or High state | -0.5 to +5.5 | V |
| I _{OUT} | DC output current | output in Low state | 128 | mA |
| T _{stg} | Storage temperature range | | -65 to 150 | °C |

NOTES:

- Stresses beyond those listed may cause permanent damage to the device. These are stress ratings only and functional operation of the device at these or any other conditions beyond those indicated under "recommended operating conditions" is not implied. Exposure to absolute-maximum-rated conditions for extended periods may affect device reliability.
- The performance capability of a high-performance integrated circuit in conjunction with its thermal environment can create junction temperatures which are detrimental to reliability. The maximum junction temperature of this integrated circuit should not exceed 150°C.
- The input and output voltage ratings may be exceeded if the input and output current ratings are observed.

Octal buffer/line driver (3-State)

74ABT244

RECOMMENDED OPERATING CONDITIONS

| SYMBOL | PARAMETER | LIMITS | | UNIT |
|------------------|--------------------------------------|--------|-----------------|------|
| | | Min | Max | |
| V _{CC} | DC supply voltage | 4.5 | 5.5 | V |
| V _I | Input voltage | 0 | V _{CC} | V |
| V _{IH} | High-level input voltage | 2.0 | | V |
| V _{IL} | Low-level Input voltage | | 0.8 | V |
| I _{OH} | High-level output current | | -32 | mA |
| I _{OL} | Low-level output current | | 64 | mA |
| Δt/Δv | Input transition rise or fall rate | 0 | 5 | ns/V |
| T _{amb} | Operating free-air temperature range | -40 | +85 | °C |

DC ELECTRICAL CHARACTERISTICS

| SYMBOL | PARAMETER | TEST CONDITIONS | LIMITS | | | | | UNIT |
|--------------------|--|---|--------------------------|-------|------|-----------------------------------|------|------|
| | | | T _{amb} = +25°C | | | T _{amb} = -40°C to +85°C | | |
| | | | Min | Typ | Max | Min | Max | |
| V _{IK} | Input clamp voltage | V _{CC} = 4.5V; I _{IK} = -18mA | | -0.9 | -1.2 | | -1.2 | V |
| V _{OH} | High-level output voltage | V _{CC} = 4.5V; I _{OH} = -3mA; V _I = V _{IL} or V _{IH} | 2.5 | 2.9 | | 2.5 | | V |
| | | V _{CC} = 5.0V; I _{OH} = -3mA; V _I = V _{IL} or V _{IH} | 3.0 | 3.4 | | 3.0 | | V |
| | | V _{CC} = 4.5V; I _{OH} = -32mA; V _I = V _{IL} or V _{IH} | 2.0 | 2.4 | | 2.0 | | V |
| V _{OL} | Low-level output voltage | V _{CC} = 4.5V; I _{OL} = 64mA; V _I = V _{IL} or V _{IH} | | 0.42 | 0.55 | | 0.55 | V |
| I _I | Input leakage current | V _{CC} = 5.5V; V _I = GND or 5.5V | | ±0.01 | ±1.0 | | ±1.0 | μA |
| I _{OFF} | Power-off leakage current | V _{CC} = 0.0V; V _O or V _I ≤ 4.5V | | ±5.0 | ±100 | | ±100 | μA |
| I _{PU/PD} | Power-up/down 3-State output current ³ | V _{CC} = 2.0V; V _O = 0.5V; V _I = GND or V _{CC} ; V _{OE} = Don't care | | ±5.0 | ±50 | | ±50 | μA |
| I _{OZH} | 3-State output High current | V _{CC} = 5.5V; V _O = 2.7V; V _I = V _{IL} or V _{IH} | | 5.0 | 50 | | 50 | μA |
| I _{OZL} | 3-State output Low current | V _{CC} = 5.5V; V _O = 0.5V; V _I = V _{IL} or V _{IH} | | -5.0 | -50 | | -50 | μA |
| I _{CEX} | Output High leakage current | V _{CC} = 5.5V; V _O = 5.5V; V _I = GND or V _{CC} | | 5.0 | 50 | | 50 | μA |
| I _O | Short-circuit output current ¹ | V _{CC} = 5.5V; V _O = 2.5V | -40 | -100 | -180 | -40 | -180 | mA |
| I _{CCH} | Quiescent supply current | V _{CC} = 5.5V; Outputs High, V _I = GND or V _{CC} | | 50 | 250 | | 250 | μA |
| I _{CCL} | | V _{CC} = 5.5V; Outputs Low, V _I = GND or V _{CC} | | 24 | 30 | | 30 | mA |
| I _{CCZ} | | V _{CC} = 5.5V; Outputs 3-State; V _I = GND or V _{CC} | | 50 | 250 | | 250 | μA |
| ΔI _{CC} | Additional supply current per input pin ² | Outputs enabled, one data input at 3.4V, other inputs at V _{CC} or GND; V _{CC} = 5.5V | | 0.5 | 1.5 | | 1.5 | mA |
| | | Outputs 3-State, one data input at 3.4V, other inputs at V _{CC} or GND; V _{CC} = 5.5V | | 50 | 250 | | 250 | μA |
| | | Outputs 3-State, one enable input at 3.4V, other inputs at V _{CC} or GND; V _{CC} = 5.5V | | 0.5 | 1.5 | | 1.5 | mA |

NOTES:

- Not more than one output should be tested at a time, and the duration of the test should not exceed one second.
- This is the increase in supply current for each input at 3.4V.
- This parameter is valid for any V_{CC} between 0V and 2.1V with a transition time of up to 10msec. For V_{CC} = 2.1V to V_{CC} = 5V ± 10%, a transition time of up to 100μsec is permitted.

Octal buffer/line driver (3-State)

74ABT244

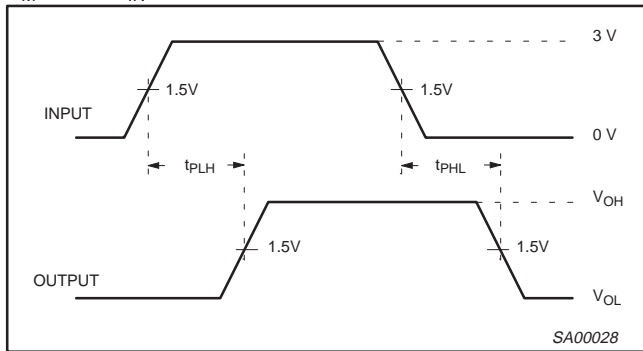
AC CHARACTERISTICS

GND = 0V; $t_R = t_F = 2.5\text{ns}$; $C_L = 50\text{pF}$, $R_L = 500\Omega$

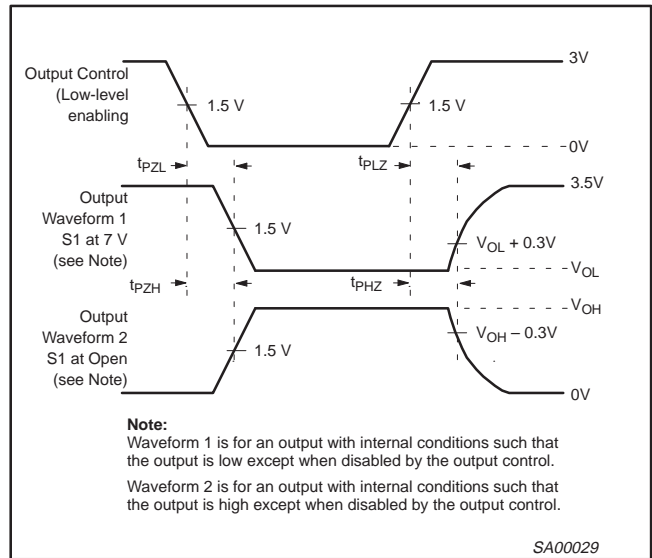
| SYMBOL | PARAMETER | WAVEFORM | 74ABT244 | | | | | UNIT |
|--------------------------------------|--|----------|--|------------|------------|--|------------|------|
| | | | $T_{\text{amb}} = +25^\circ\text{C}$ $V_{\text{CC}} = +5.0\text{V}$ | | | $T_{\text{amb}} = -40^\circ\text{C to } +85^\circ\text{C}$ $V_{\text{CC}} = +5.0\text{V} \pm 0.5\text{V}$ | | |
| | | | Min | Typ | Max | Min | Max | |
| t_{PLH} t_{PHL} | Propagation delay An to Yn | 1 | 1.0 1.0 | 2.6 2.9 | 4.1 4.2 | 1.0 1.0 | 4.6 4.6 | ns |
| t_{PZH} t_{PZL} | Output enable time to High and Low level | 2 | 1.1 2.1 | 3.1 4.1 | 4.6 5.6 | 1.1 2.1 | 5.1 6.1 | ns |
| t_{PHZ} t_{PLZ} | Output disable time from High and Low level | 2 | 2.1 1.7 | 4.1 2.7 | 5.6 5.2 | 2.1 1.7 | 6.6 5.7 | ns |

AC WAVEFORMS

$V_M = 1.5\text{V}$, $V_{\text{IN}} = \text{GND to } 3.0\text{V}$

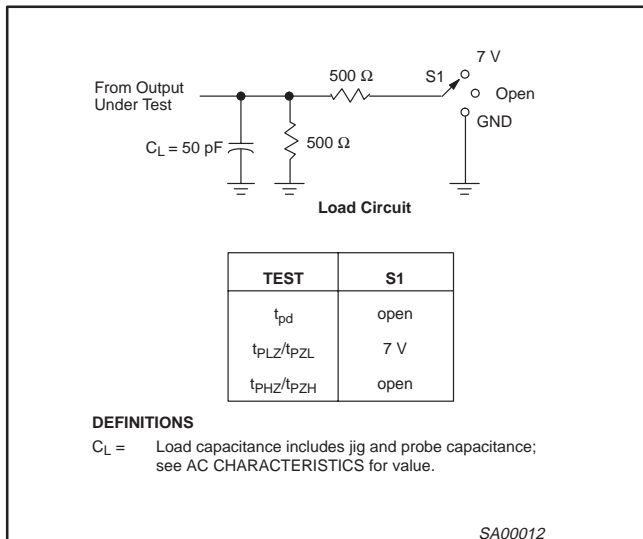


Waveform 1. Waveforms Showing the Input (An) to Output (Yn) Propagation Delays



Waveform 2. Waveforms Showing the 3-State Output Enable and Disable Times

TEST CIRCUIT AND WAVEFORMS



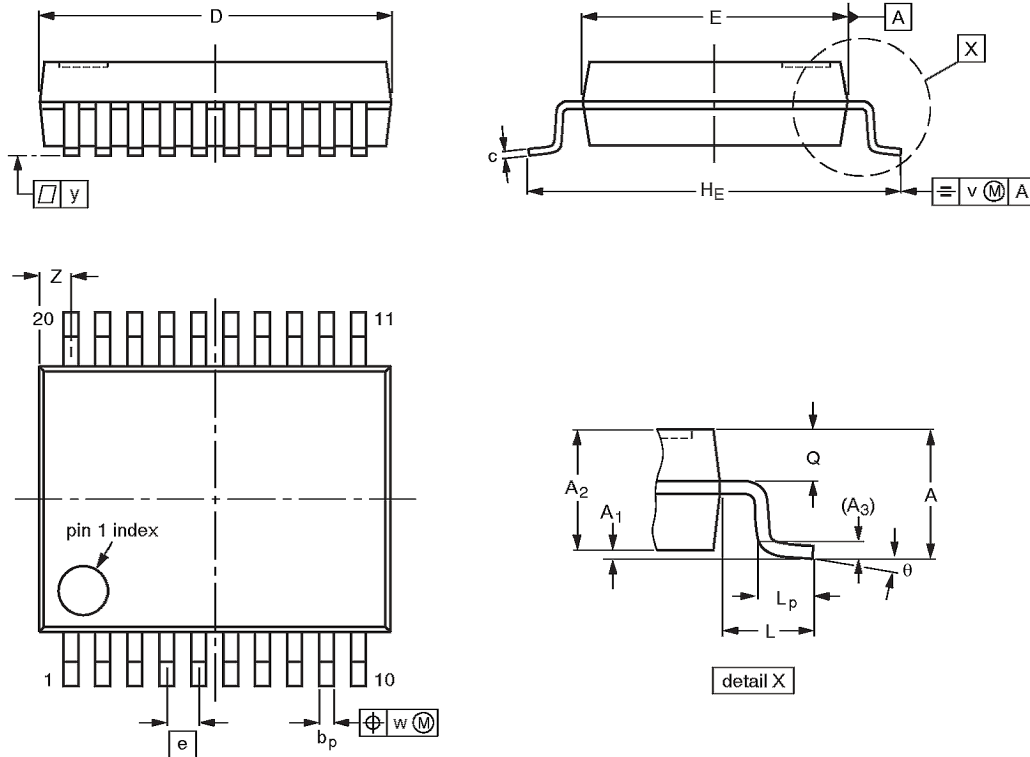
SA00012

Octal buffer/line driver (3-State)

74ABT244

SSOP20: plastic shrink small outline package; 20 leads; body width 5.3 mm

SOT339-1



DIMENSIONS (mm are the original dimensions)

| UNIT | A max. | A ₁ | A ₂ | A ₃ | b _p | c | D ⁽¹⁾ | E ⁽¹⁾ | e | H _E | L | L _p | Q | v | w | y | Z ⁽¹⁾ | θ |
|------|--------|----------------|----------------|----------------|----------------|--------------|------------------|------------------|------|----------------|------|----------------|------------|-----|------|-----|------------------|----------|
| mm | 2.0 | 0.21 0.05 | 1.80 1.65 | 0.25 | 0.38 0.25 | 0.20 0.09 | 7.4 7.0 | 5.4 5.2 | 0.65 | 7.9 7.6 | 1.25 | 1.03 0.63 | 0.9 0.7 | 0.2 | 0.13 | 0.1 | 0.9 0.5 | 8° 0° |

Note

1. Plastic or metal protrusions of 0.20 mm maximum per side are not included.

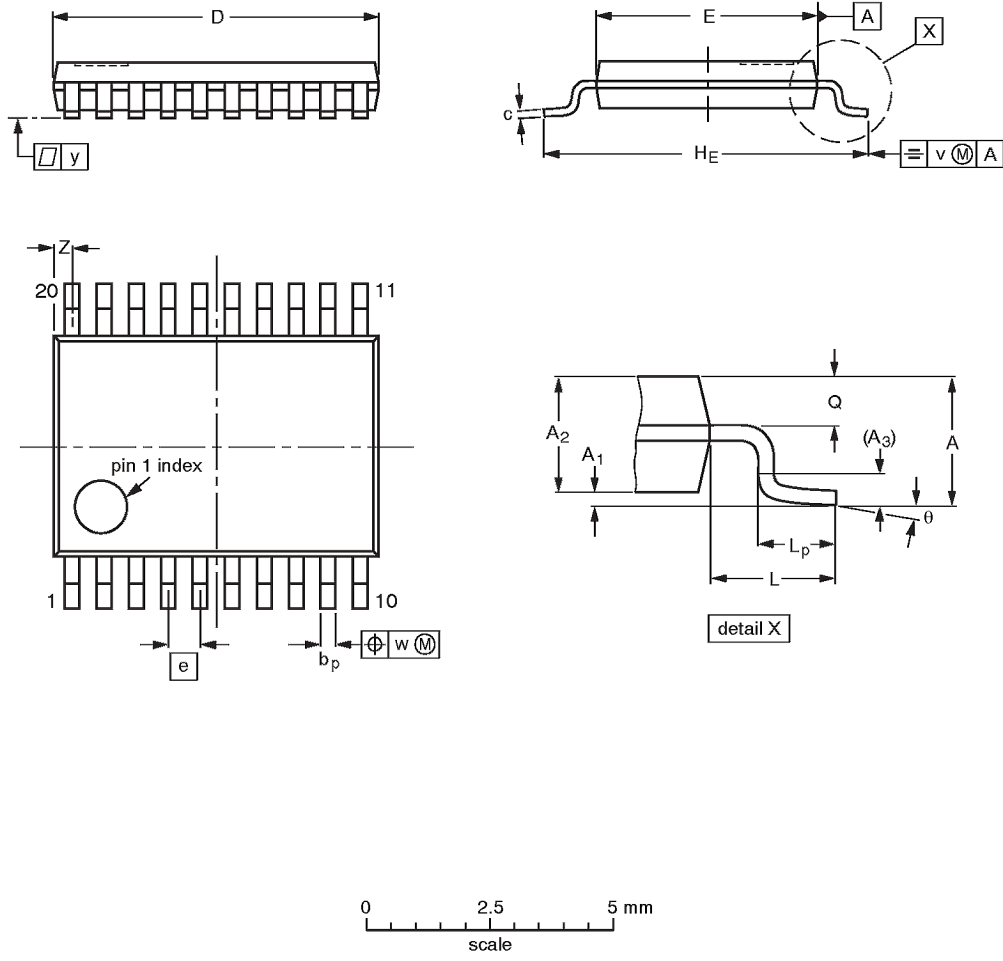
| OUTLINE VERSION | REFERENCES | | | | EUROPEAN PROJECTION |
|-----------------|------------|----------|------|--|---------------------|
| | IEC | JEDEC | EIAJ | | |
| SOT339-1 | | MO-150AE | | | |

Octal buffer/line driver (3-State)

74ABT244

TSSOP20: plastic thin shrink small outline package; 20 leads; body width 4.4 mm

SOT360-1



DIMENSIONS (mm are the original dimensions)

| UNIT | A max. | A ₁ | A ₂ | A ₃ | b _p | c | D ⁽¹⁾ | E ⁽²⁾ | e | H _E | L | L _p | Q | v | w | y | Z ⁽¹⁾ | θ |
|------|--------|----------------|----------------|----------------|----------------|------------|------------------|------------------|------|----------------|-----|----------------|------------|-----|------|-----|------------------|----------|
| mm | 1.10 | 0.15 0.05 | 0.95 0.80 | 0.25 | 0.30 0.19 | 0.2 0.1 | 6.6 6.4 | 4.5 4.3 | 0.65 | 6.6 6.2 | 1.0 | 0.75 0.50 | 0.4 0.3 | 0.2 | 0.13 | 0.1 | 0.5 0.2 | 8° 0° |

Notes

1. Plastic or metal protrusions of 0.15 mm maximum per side are not included.
2. Plastic interlead protrusions of 0.25 mm maximum per side are not included.

| OUTLINE VERSION | REFERENCES | | | | EUROPEAN PROJECTION |
|-----------------|------------|----------|------|--|---------------------|
| | IEC | JEDEC | EIAJ | | |
| SOT360-1 | | MO-153AC | | | |