

# NB7N017MEVB

## NB7N017M Evaluation Board User's Manual



**ON Semiconductor®**

<http://onsemi.com>

### EVAL BOARD USER'S MANUAL

#### Description

This document describes the NB7N017M evaluation board and the appropriate lab test setups. It should be used in conjunction with the NB7N017M data sheet which contains full technical details on the device specification and operation. This evaluation board is offered as a convenience for the customers interested in performing their own engineering characterization and performance assessment of the NB7N017M. The board provides a high bandwidth 50  $\Omega$  controlled impedance environment.

The evaluation board is designed to facilitate a quick evaluation of the NB7N017M GigaComm™ 8-bit dual modulus programmable divider/prescaler. The current mode logic (CML) output ensures minimal noise and fast switching edges.

This evaluation board manual contains:

- Information on NB7N017MEVB Evaluation Board
- Appropriate Lab Test Setup
- Bill of Materials

#### What measurements can you expect to make?

With this evaluation board, the following measurements could be performed in single-ended or differential modes of operation:

- Jitter
- Frequency Response
- Output Rise and Fall Time

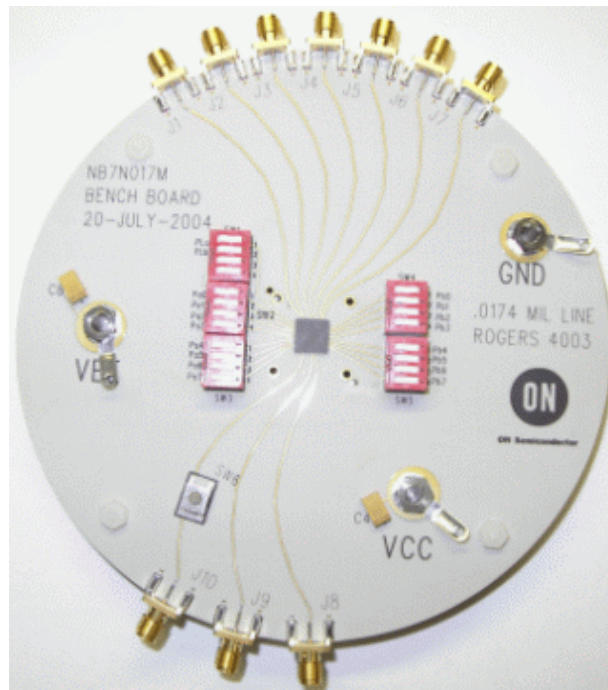


Figure 1. Evaluation Board Photo

# NB7N017MEVB

## Board Lay-Up

The NB7N017MEVB evaluation board is implemented in four layers (Figure 2, Evaluation Board Lay-up). The first layer or primary trace layer is 5 mil thick Rogers RO4003 material, which is designed to have equal electrical length on all signal traces from the device under the test (DUT) to the sense output. The second layer is the 1.0 oz copper ground plane. The FR4 dielectric material is placed between second and third layer and between third and fourth layer. The third layer is also 1.0 oz copper power plane. The fourth layer is the secondary trace layer.

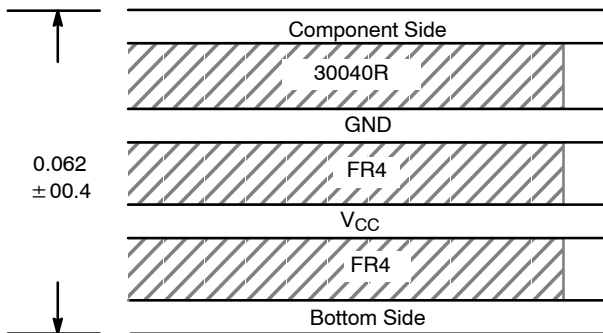
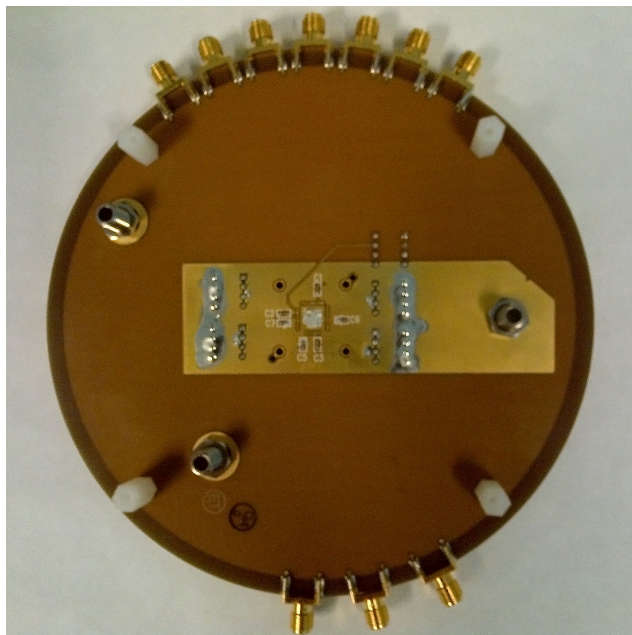


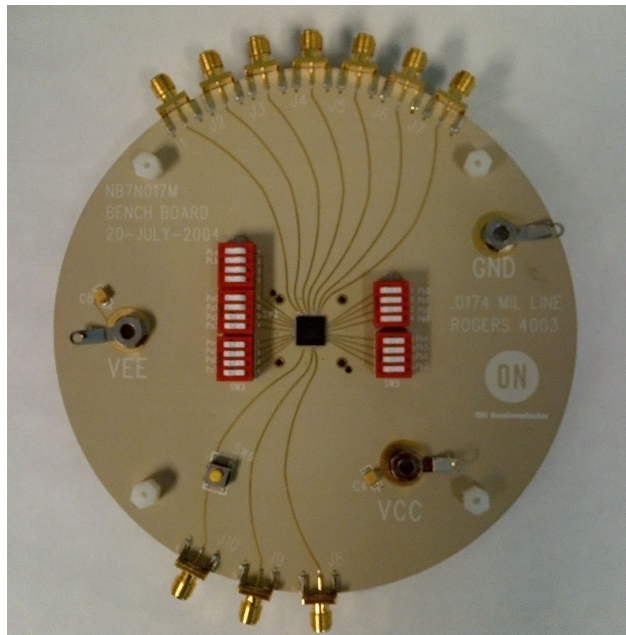
Figure 2. Evaluation Board Lay-Up

## Board Layout

The NB7N017MEVB evaluation board was designed to be versatile (see evaluation board schematic Figure 5). The input and output signal trace layout of the evaluation board is shown in Figure 3. The high-speed input and output pins are on a controlled 50 Ω impedance trace to an SMA connector. Other control pins (Pa[0:7] and Pb[0:7]) are connected to a switch for ease of programmability. The master RESET can either be controlled by a switch (SW6) or an input signal (J10).



(Bottom View)



(Top View)

Figure 3. Evaluation Board

# NB7N017MEVB

## Power Supplies

The NB7N017M is powered by  $|V_{CC} - V_{EE}| = 3.3$  V power supplies. For straightforward lab setup operation, negative voltages is recommended to enable the  $50\ \Omega$  internal impedance of the oscilloscope to be used as a termination for the CML signals ( $V_{CC} = 0.0$  V,  $V_{EE} = -3.3$  V and  $GND = 0.0$  V).

It is recommended to add capacitors (C4 and C8 are  $22\ \mu\text{F}$  and C1, C2, C3, C5, C6, and C7 are  $0.1\ \mu\text{F}$ ) to reduce the unwanted noise from the power supplies. Adding capacitors can improve the edge rates, reduce over shoot, and under shoot. Evaluation board provides several capacitor pads to add capacitors.

## Termination

CML outputs need to be terminated to  $V_{CC}$  via a  $50\ \Omega$  resistor. The input pins contain internal  $50\ \Omega$  resistors (VT pins). The VT pins are tied to  $V_{CC}$  which limits the input configuration of this device on this evaluation board.

NOTE: The test measurement device must contain  $50\ \Omega$  termination.

1. Connect appropriate power supplies. ( $V_{CC} = 0.0$  V,  $V_{EE} = -3.3$  V, and  $GND = 0.0$  V).
2. Connect input signals to the appropriate SMA connectors. Configure input signals according to the device data sheet.
3. Connect a test measurement device on the device output SMA connectors.

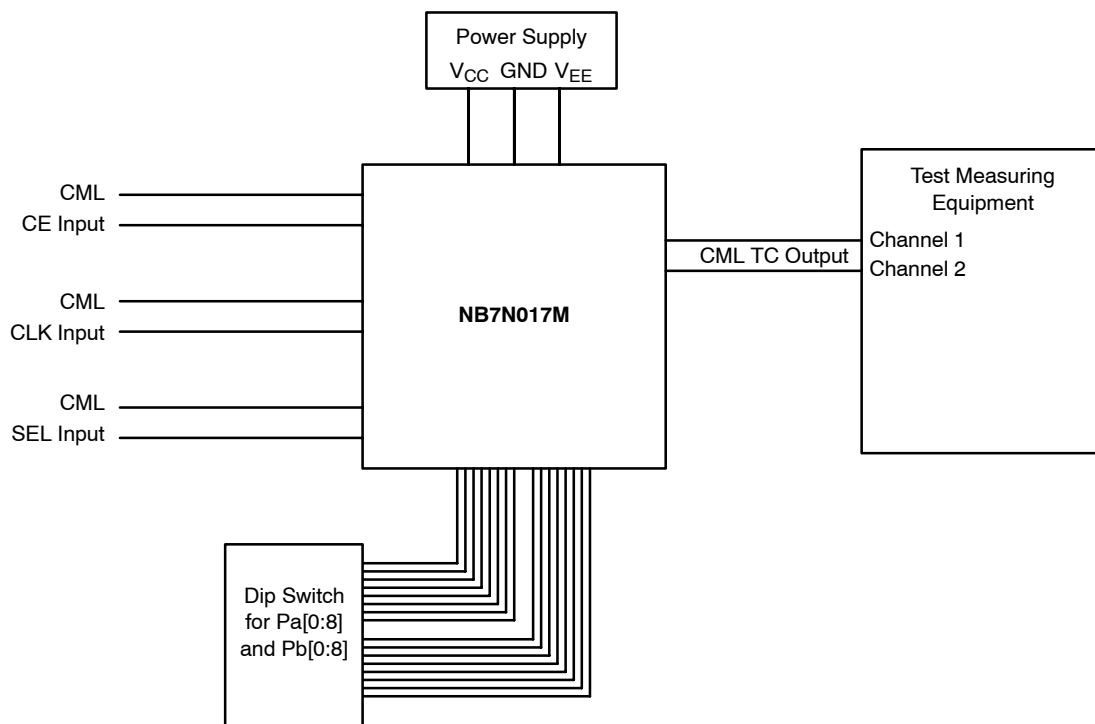


Figure 4. Typical Lab Setup

# NB7N017MEVB

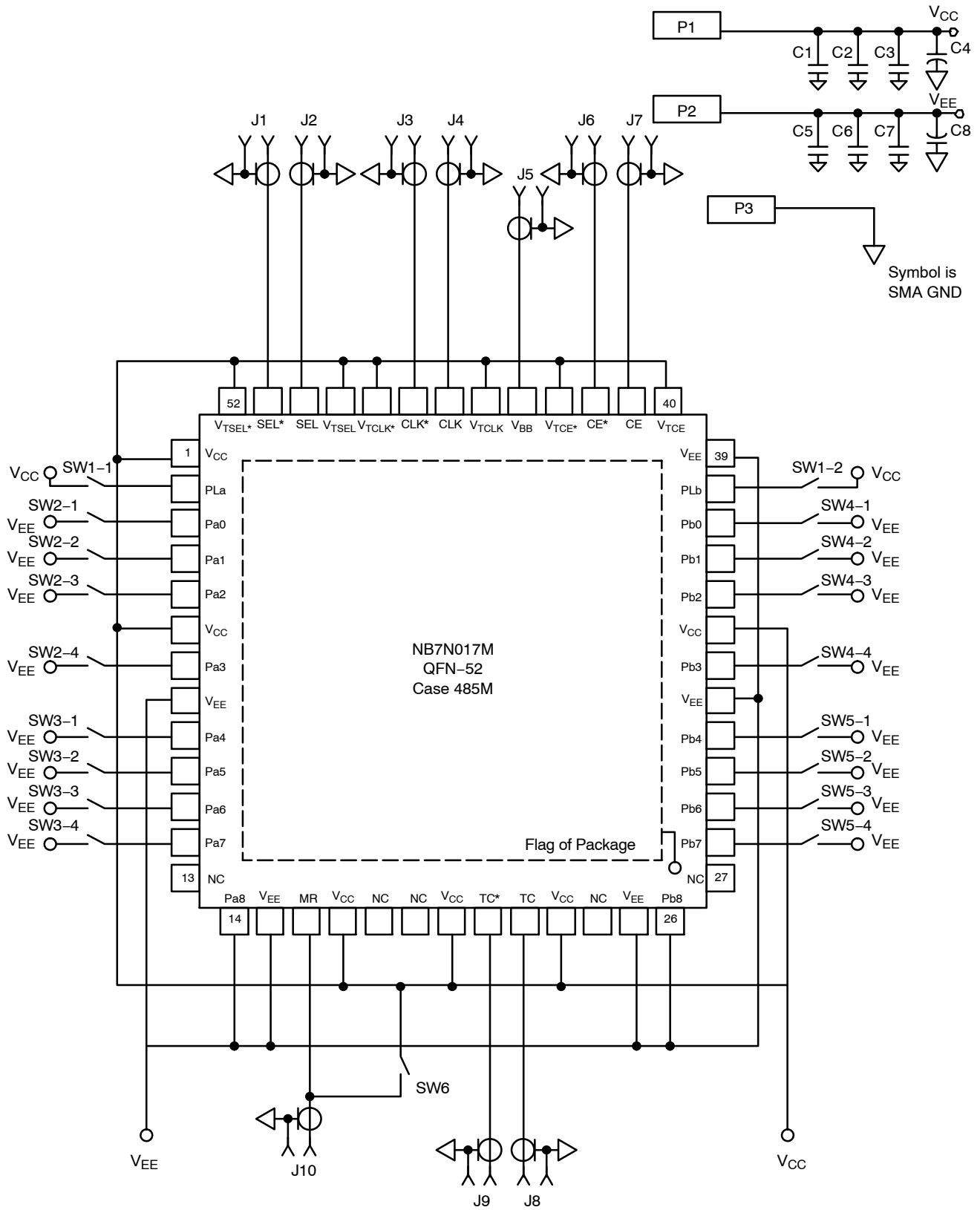


Figure 5. Evaluation Board Schematic

# NB7N017MEVB

**Table 1. BILL OF MATERIALS FOR NB7N017MEVB**

Components	Manufacturer	Description	Part Number	Web Site
SMA Connector	Johnson	SMA Connector, Side Launch, Gold Plated	142-0701-801	
Chip Capacitor	Kemet*	0603 0.1 $\mu$ F $\pm$ 10%	C0603C104K4RAC	www.newark.com
		22 $\mu$ F $\pm$ 10%	T491C226K016AS	
Banana Jack	SPC*	Banana Jack Female	813	www.newark.com
Evaluation Board	ON Semiconductor	NB7N017M Evaluation Board	NB7N017MEVB	<a href="http://www.onsemi.com">http://www.onsemi.com</a>
Device Samples	ON Semiconductor	3.3 V 8-bit Divider/Prescaler with CML Output	NB7N017M	<a href="http://www.onsemi.com">http://www.onsemi.com</a>
Switch	Grayhill	Dip Switch, 1 Position	765B04	
Switch	Grayhill	Momentary Switch	95C04A3GW	

\*Components are available through most distributors, i.e. [www.newark.com](http://www.newark.com), [www.digikey.com](http://www.digikey.com)

ON Semiconductor and the ON Semiconductor logo are trademarks of Semiconductor Components Industries, LLC dba ON Semiconductor or its subsidiaries in the United States and/or other countries. ON Semiconductor owns the rights to a number of patents, trademarks, copyrights, trade secrets, and other intellectual property. A listing of ON Semiconductor's product/patent coverage may be accessed at [www.onsemi.com/site/pdf/Patent-Marking.pdf](http://www.onsemi.com/site/pdf/Patent-Marking.pdf). ON Semiconductor is an Equal Opportunity/Affirmative Action Employer. This literature is subject to all applicable copyright laws and is not for resale in any manner.

The evaluation board/kit (research and development board/kit) (hereinafter the "board") is not a finished product and is as such not available for sale to consumers. The board is only intended for research, development, demonstration and evaluation purposes and should as such only be used in laboratory/development areas by persons with an engineering/technical training and familiar with the risks associated with handling electrical/mechanical components, systems and subsystems. This person assumes full responsibility/liability for proper and safe handling. Any other use, resale or redistribution for any other purpose is strictly prohibited.

The board is delivered "AS IS" and without warranty of any kind including, but not limited to, that the board is production-worthy, that the functions contained in the board will meet your requirements, or that the operation of the board will be uninterrupted or error free. ON Semiconductor expressly disclaims all warranties, express, implied or otherwise, including without limitation, warranties of fitness for a particular purpose and non-infringement of intellectual property rights.

ON Semiconductor reserves the right to make changes without further notice to any board.

You are responsible for determining whether the board will be suitable for your intended use or application or will achieve your intended results. Prior to using or distributing any systems that have been evaluated, designed or tested using the board, you agree to test and validate your design to confirm the functionality for your application. Any technical, applications or design information or advice, quality characterization, reliability data or other services provided by ON Semiconductor shall not constitute any representation or warranty by ON Semiconductor, and no additional obligations or liabilities shall arise from ON Semiconductor having provided such information or services.

The boards are not designed, intended, or authorized for use in life support systems, or any FDA Class 3 medical devices or medical devices with a similar or equivalent classification in a foreign jurisdiction, or any devices intended for implantation in the human body. Should you purchase or use the board for any such unintended or unauthorized application, you shall indemnify and hold ON Semiconductor and its officers, employees, subsidiaries, affiliates, and distributors harmless against all claims, costs, damages, and expenses, and reasonable attorney fees arising out of, directly or indirectly, any claim of personal injury or death associated with such unintended or unauthorized use, even if such claim alleges that ON Semiconductor was negligent regarding the design or manufacture of the board.

This evaluation board/kit does not fall within the scope of the European Union directives regarding electromagnetic compatibility, restricted substances (RoHS), recycling (WEEE), FCC, CE or UL, and may not meet the technical requirements of these or other related directives.

**FCC WARNING** – This evaluation board/kit is intended for use for engineering development, demonstration, or evaluation purposes only and is not considered by ON Semiconductor to be a finished end product fit for general consumer use. It may generate, use, or radiate radio frequency energy and has not been tested for compliance with the limits of computing devices pursuant to part 15 of FCC rules, which are designed to provide reasonable protection against radio frequency interference. Operation of this equipment may cause interference with radio communications, in which case the user shall be responsible, at its expense, to take whatever measures may be required to correct this interference.

ON Semiconductor does not convey any license under its patent rights nor the rights of others.

**LIMITATIONS OF LIABILITY:** ON Semiconductor shall not be liable for any special, consequential, incidental, indirect or punitive damages, including, but not limited to the costs of requalification, delay, loss of profits or goodwill, arising out of or in connection with the board, even if ON Semiconductor is advised of the possibility of such damages. In no event shall ON Semiconductor's aggregate liability from any obligation arising out of or in connection with the board, under any theory of liability, exceed the purchase price paid for the board, if any.

For more information and documentation, please visit [www.onsemi.com](http://www.onsemi.com).

---

## PUBLICATION ORDERING INFORMATION

### LITERATURE FULFILLMENT:

Email Requests to: [orderlit@onsemi.com](mailto:orderlit@onsemi.com)

ON Semiconductor Website: [www.onsemi.com](http://www.onsemi.com)

### TECHNICAL SUPPORT

North American Technical Support:

Voice Mail: 1 800-282-9855 Toll Free USA/Canada

Phone: 011 421 33 790 2910

Europe, Middle East and Africa Technical Support:

Phone: 00421 33 790 2910

For additional information, please contact your local Sales Representative