

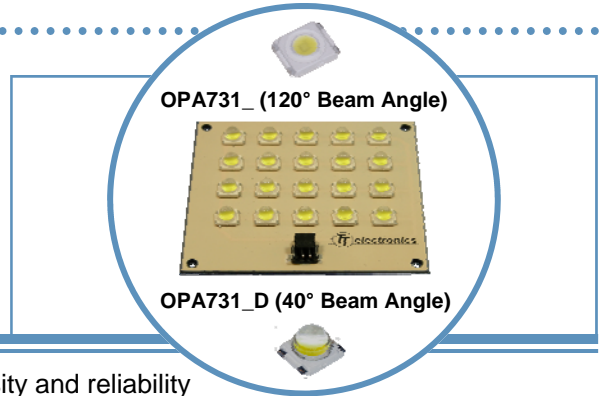
Part Number	Package	Material	Color	Dominant $\lambda$ D	Lens Color	$I_v$ at $I_f=mA/Typ$	Viewing Angle (Degrees)	$V_f$ (Typ)	RoHS
OPA731B	20W Light Flood	InGaN	Blue	470 nm	Clear	700/180 lm	120°	18	✓
OPA731BD	20W Light Flood	InGaN	Blue	470 nm	Clear	1,400/180 lm	40°	18	✓

# OPA731 Series

## 20 Watt Light Flood on Another Linear Heat Spreader

### OPA731 Series

- 20, 1 watt LEDs per square substrate
- Mono-color per strip (Blue, Green, Red, Yellow, White)
- Two component beam angle options (120° or 40°)
- Universal connector (Tyco 2-292173-2 mates with 173977-2)
- RoHS Compliant

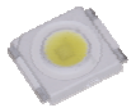


The **OPA731** Series are designed for areas where lighting intensity and reliability are essential. The light beam angles of 40° and 120° are ideal for illuminating small and medium size areas while requiring minimal space. A patented substrate is used to ensure the best heat dissipation of any light assembly in the industry.

For custom colors and design contact your OPTEK representative.

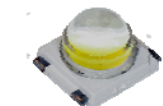
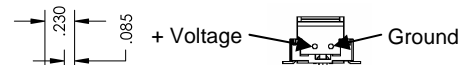
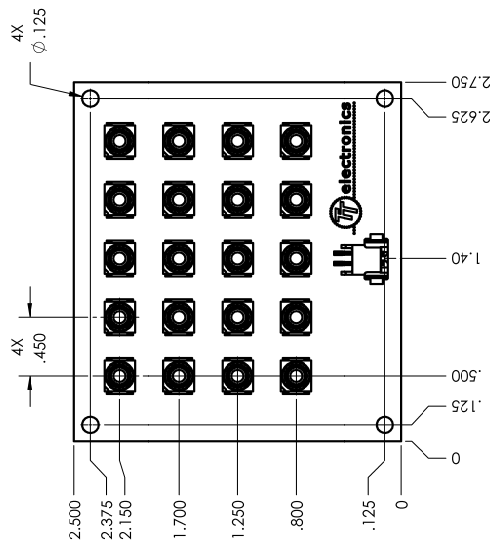
### Electrical / Optical Characteristics: $T_A=25^{\circ}\text{C}$ , $I_F=1.4\text{A}$

Part Number	Typical Forward Voltage (V)	Luminous Flux (lm)	Beam Angle	Color	Dominant Wavelength
OPA731Y	12.5	700	120°	Yellow	587 nm
OPA731B	18.0	180		Blue	470 nm
OPA731G	18.0	960		Green	530 nm
OPA731R	12.5	520		Red	625 nm
OPA731W	18.0	960		White	6,500°K
OPA731YD	12.5	700	40°	Yellow	587 nm
OPA731BD	18.0	180		Blue	470 nm
OPA731GD	18.0	960		Green	530 nm
OPA731RD	12.5	520		Red	625 nm
OPA731WD	18.0	960		White	6,500°K



**OPA731\_**

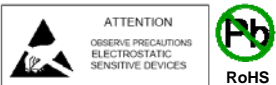
See OVSP\_BCR4 for component specifications



**OPA731\_D**

See OVSP\_4CR44 for component specifications

**DO NOT LOOK DIRECTLY AT LED WITH UNSHIELDED EYES OR DAMAGE TO RETINA MAY OCCUR.**



OPTEK reserves the right to make changes at any time in order to improve design and to supply the best product possible.