

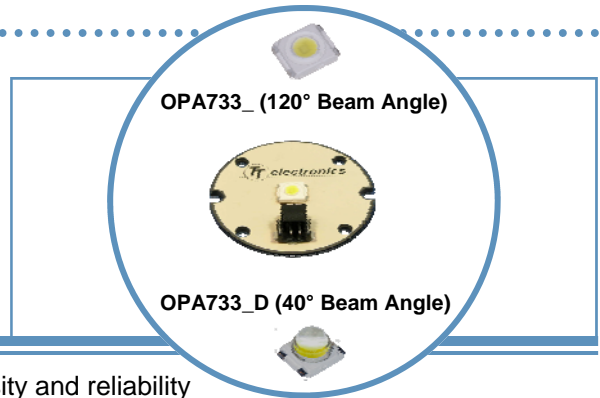
Part Number	Package	Material	Color	Dominant λ D	Lens Color	I_v at $I_f=mA/Typ$	Viewing Angle (Degrees)	V_f (Typ)	RoHS
OPA733Y	1W Light Spot	AlInGaP	Yellow	587 nm	Clear	350/26 lm	120°	2.5	√
OPA733YD	1W Light Spot	AlInGaP	Yellow	587 nm	Clear	350/26 lm	40°	2.5	√

OPA733 Series

1 Watt Light Spot on OptoTherm Linear Heat Spreader

OPA733 Series

- 1 watt LED on round substrate
- Mono-color per strip (Blue, Green, Red, Yellow, White)
- Two component beam angle options (120° or 40°)
- Universal connector (Tyco 2-292173-2 mates with 173977-2)
- RoHS Compliant

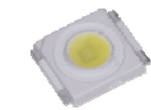


The **OPA733** Series are designed for areas where lighting intensity and reliability are essential. The light beam angles of 40° and 120° are ideal for illuminating small and medium size areas while requiring minimal space. A High Performance Heat Spreader (HPHS) is used to ensure the best heat dissipation of any light assembly in the industry.

For custom colors and design contact your OPTEK representative.

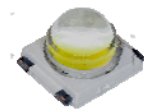
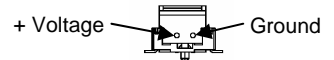
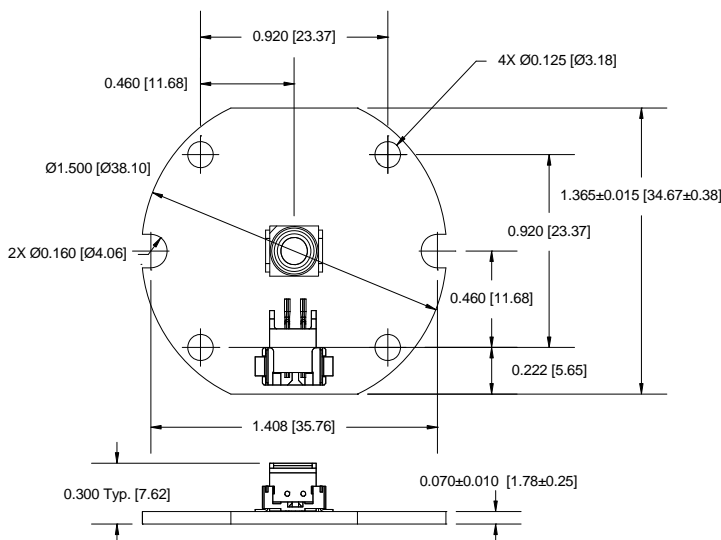
Electrical / Optical Characteristics: $T_A=25^\circ\text{C}$, $I_F=350\text{mA}$

Part Number	Typical Forward Voltage (V)	Luminous Flux (lm)	Beam Angle	Color	Dominant Wavelength
OPA733Y	2.5	26	120°	Yellow	587 nm
OPA733B	3.6	9		Blue	470 nm
OPA733G	3.6	48		Green	530 nm
OPA733R	2.5	35		Red	625 nm
OPA733W	3.6	48		White	6,500°K
OPA733YD	2.5	26	40°	Yellow	587 nm
OPA733BD	3.6	9		Blue	470 nm
OPA733GD	3.6	48		Green	530 nm
OPA733RD	2.5	35		Red	625 nm
OPA733WD	3.6	48		White	6,500°K



OPA733_

See OVSP_BCR4 for component specifications



OPA733_D

See OVSP_4CR44 for component specifications



DO NOT LOOK DIRECTLY AT LED WITH UNSHIELDED EYES OR DAMAGE TO RETINA MAY OCCUR.

OPTEK reserves the right to make changes at any time in order to improve design and to supply the best product possible.