

Housing set - HC-MOT-AFL-SET - 1409053

Please be informed that the data shown in this PDF Document is generated from our Online Catalog. Please find the complete data in the user's documentation. Our General Terms of Use for Downloads are valid (<http://phoenixcontact.com/download>)



Connector on motor side, EMC metal housing attachment incl. crimp contact insert, with flat seal and coated protective cover, without crimp contacts, housing with coatable thick-layer passivation

Key Commercial Data

Packing unit	1 pc
GTIN	
GTIN	4046356619349

Technical data

General

Degree of pollution	3
Insertion/withdrawal cycles	≥ 100
Size	MOT
Conductor cross section	0.35 mm ² ... 2.5 mm ² (Power crimp contacts) 0.14 mm ² ... 1 mm ² (Control crimp contacts)
Connection cross section AWG	20 ... 14 (Power crimp contacts) 26 ... 18 (Control crimp contacts)
Stripping length of the individual wire	6 mm (Power crimp contacts)

Ambient conditions

Ambient temperature (operation)	-30 °C ... 100 °C
Degree of protection	IP67

Material data

Seal material	EPDM
Housing material	GD-Zn
Contact material	Copper alloy
Contact surface material	Au
Material of contact surface, control contact	Au

Housing set - HC-MOT-AFL-SET - 1409053

Technical data

Material data

Contact carrier material	PA
--------------------------	----

Electrical characteristics

Rated voltage (III/3)	250 V (Signal)
Rated surge voltage	6 kV (Phase/housing power circuit)
	8 kV (Phase/phase power circuit)
	4 kV (Control circuit)
Rated current	16.5 A (power contacts)
	2.5 A (control contacts)

Standards and Regulations

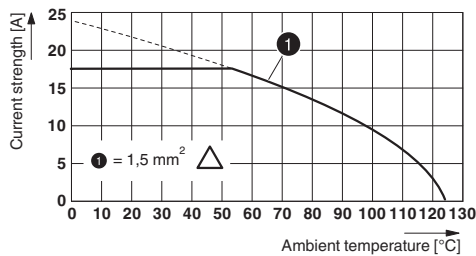
Flammability rating according to UL 94	V0
--	----

Environmental Product Compliance

China RoHS	Environmentally friendly use period: unlimited = EFUP-e
	No hazardous substances above threshold values

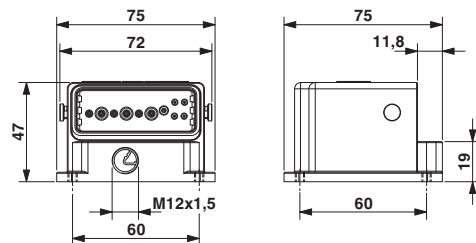
Drawings

Diagram



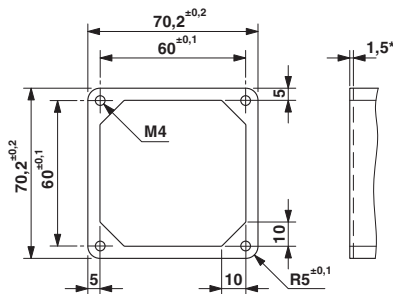
Derating diagram

Dimensional drawing



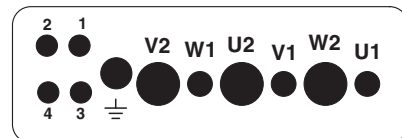
Dimensional drawing

Dimensional drawing



Flange drawing (1.5* interface dimensions up to this height).

Schematic diagram



Connector pin assignment, connection side

Housing set - HC-MOT-AFL-SET - 1409053

Approvals


Approvals


Approvals

UL Listed / cUL Listed / EAC / cULus Listed

Ex Approvals

Approval details

UL Listed		http://database.ul.com/cgi-bin/XYV/template/LISEXT/1FRAME/index.htm E221474-20130720
Nominal voltage UN		600 V
Nominal current IN		10 A
mm ² /AWG/kcmil		16

cUL Listed		http://database.ul.com/cgi-bin/XYV/template/LISEXT/1FRAME/index.htm E221474-20130720
Nominal voltage UN		600 V
Nominal current IN		10 A
mm ² /AWG/kcmil		16

EAC		B.01742
-----	---	---------

cULus Listed	
--------------	---

Phoenix Contact 2019 © - all rights reserved
<http://www.phoenixcontact.com>

PHOENIX CONTACT GmbH & Co. KG
Flachmarktstr. 8
32825 Blomberg
Germany
Tel. +49 5235 300
Fax +49 5235 3 41200
<http://www.phoenixcontact.com>