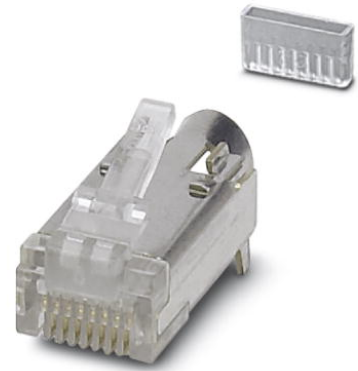


VS-08-ST-H11-RJ45


Order No.: 1652716



<http://eshop.phoenixcontact.de/phoenix/treeViewClick.do?UID=1652716>

RJ45 pin insert, CAT5e, 8-pos., shielded, IDC connection method, for litz wires AWG 27 ... 26, with strain relief

Ethernet

Commercial data	
GTIN (EAN)	
sales group	D511
Pack	5 pcs.
Customs tariff	85366990
Catalog page information	Page 284 (PC-2011)

Product notes

WEEE/RoHS-compliant since: 02/08/2006



<http://www.download.phoenixcontact.com>
Please note that the data given here has been taken from the online catalog. For comprehensive information and data, please refer to the user documentation. The General Terms and Conditions of Use apply to Internet downloads.

Technical data

Mechanical characteristics	
Number of positions	8
Shielded	Yes
Insertion/withdrawal cycles	≥ 200
Conductor cross-section	0.14 mm ² ... 0.18 mm ² (stranded)
Connection cross-section AWG	27 ... 26 (stranded)

Cable exit	Straight
Ambient temperature (operation)	-25 °C ... 60 °C

Material data

Inflammability class acc. to UL 94	V2
Contact carrier material	PC
Contact material	Copper alloy
Contact surface material	Gold over nickel

Electrical characteristics

Number of positions	8
Transmission characteristics (category)	CAT5 (IEC 11801:2002), CAT5e (TIA 568B:2001)
Rated current	0.5 A
Surge voltage category	I
Pollution degree	2

Accessories

Item	Designation	Description
Bend protection sleeve		
1654756	VS-08-KS-H/GN	RJ45 bend protection sleeve, for pin inserts VS-08-ST-H11-RJ45 and VS-08-ST-H21-RJ45, for cable cross section up to 7 mm, color: green
1654743	VS-08-KS-H/GY	RJ45 bend protection sleeve, for pin inserts VS-08-ST-H11-RJ45 and VS-08-ST-H21-RJ45, for cable cross section up to 7 mm, color: gray

Sleeve housing

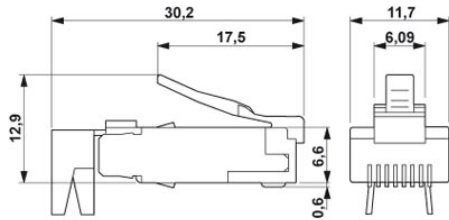
1652732	VS-08-T-H-RJ45/IP67	RJ45 sleeve housing, IP67, for pin insert VS-08-ST-H11-RJ45 and VS-08-ST-H21-RJ45, with push-pull interlocking for panel mounting frames, for cable cross section 5.0 mm ... 8.5 mm, color: gray
1658671	VS-08-T-H-RJ45/IP67-BK	RJ45 sleeve housing, IP67, for pin insert VS-08-ST-H11-RJ45 and VS-08-ST-H21-RJ45, with push-pull interlocking for panel mounting frames, for cable cross section 5.0 mm ... 8.5 mm, color: black

Tools

1653265	VS-CT-RJ45-H	Crimp tool, pliers with die, for RJ45 pin inserts VS-08-ST-H...-RJ45 and VS-08-RJ45-10G/C
---------	--------------	---

Diagrams/Drawings

Dimensioned drawing



RJ45 male insert

Address

PHOENIX CONTACT Inc., USA
586 Fulling Mill Road
Middletown, PA 17057, USA
Phone (800) 888-7388
Fax (717) 944-1625
<http://www.phoenixcon.com>



© 2011 Phoenix Contact
Technical modifications reserved;