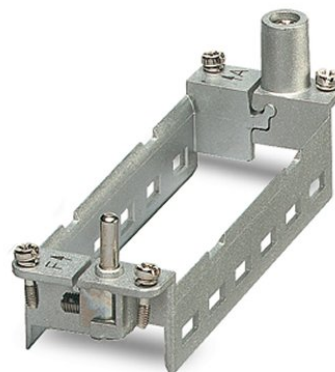


HC-M-MHR-T6-N

Order No.: 1679278



<http://eshop.phoenixcontact.de/phoenix/treeViewClick.do?UID=1679278>

HEAVYCON hinged retaining frame, for sleeve housing HC-B 24, for 6 modules

| Commercial data | |
|--------------------------|--------------------|
| EAN | 4017918162566 |
| Pack | 2 Pcs. |
| Customs tariff | 85369010 |
| Weight/Piece | 0.0772 KG |
| Catalog page information | Page 378 (PC-2007) |

Product notes

WEEE/RoHS-compliant since: 04/13/2006



<http://www.download.phoenixcontact.com>
Please note that the data given here has been taken from the online catalog. For comprehensive information and data, please refer to the user documentation. The General Terms and Conditions of Use apply to Internet downloads.

Technical data

| Electrical characteristics | |
|---------------------------------|---|
| Note | Hinged retaining frame |
| Ambient temperature (operation) | -40 °C ... 125 °C |
| Mechanical characteristics | |
| Conductor cross section | 4 mm ² ... 6 mm ² (for PE conductor – power side) |

| | |
|------------------------------|---|
| | 1 mm ² ... 2.5 mm ² (for PE conductor – control side) |
| Connection cross section AWG | 12 ... 10 (for PE conductor – power side) |
| | 18 ... 14 (for PE conductor – control side) |
| Insertion/withdrawal cycles | ≥ 500 |

General characteristics

| | |
|------------------------|--|
| Design | B24 |
| Number of module slots | 6 |
| Assembly instructions | HC-MHR-PE16 (1636981) for PE connection extension to 16 mm ² . |

Material data

| | |
|--------------------------|---------------------|
| Contact carrier material | Die-cast zinc alloy |
|--------------------------|---------------------|

Certificates / Approvals

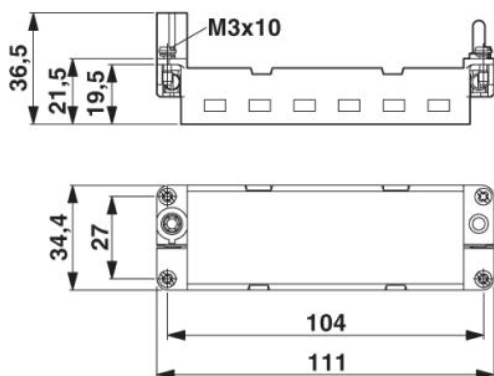


requested approbations

| | |
|---------------|------|
| Certification | GOST |
|---------------|------|

Drawings

Dimensioned drawing



Address

PHOENIX CONTACT GmbH & Co. KG
Flachsmarktstr. 8
32825 Blomberg, Germany
Phone +49 5235 3 00
Fax +49 5235 3 41200
<http://www.phoenixcontact.de>



© 2008 Phoenix Contact
Technical modifications reserved;