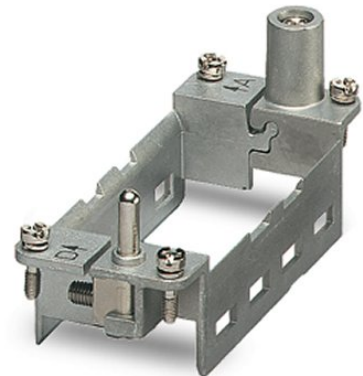



# HC-M-MHR-A4-N

Order No.: 1679304



<http://eshop.phoenixcontact.de/phoenix/treeViewClick.do?UID=1679304>

HEAVYCON hinged retaining frame, for HC-B 16 supporting base element, for 4 modules, labeling with lower case letters (a, b, c, etc.)

Commercial data	
GTIN (EAN)	 4 017918 162573
sales group	D041
Pack	2 pcs.
Customs tariff	85389099
Catalog page information	Page 552 (PC-2011)

**Product notes**

WEEE/RoHS-compliant since:  
03/27/2006



<http://www.download.phoenixcontact.com>  
Please note that the data given here has been taken from the online catalog. For comprehensive information and data, please refer to the user documentation. The General Terms and Conditions of Use apply to Internet downloads.

Technical data	
<b>Electrical characteristics</b>	
Note	Hinged retaining frame
Ambient temperature (operation)	-40 °C ... 125 °C

**Mechanical characteristics**

Conductor cross-section	4 mm <sup>2</sup> ... 6 mm <sup>2</sup> (for PE conductor – power side)
	1 mm <sup>2</sup> ... 2.5 mm <sup>2</sup> (for PE conductor – control side)
Connection cross-section AWG	12 ... 10 (for PE conductor – power side)
	18 ... 14 (for PE conductor – control side)
Insertion/withdrawal cycles	≥ 500

**General characteristics**

Design	B16/B32
Series	HC-M-B
Number of module slots	4
Assembly instructions	HC-MHR-PE16 ( 1636981) for PE connection extension to 16 mm <sup>2</sup> .

**Material data**

Contact carrier material	Die-cast zinc alloy
--------------------------	---------------------

**Certificates / Approvals**



Certification GOST

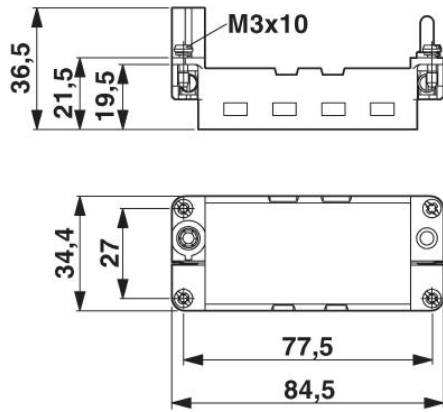
**Accessories**

Item	Designation	Description
<b>General</b>		
1585155	HC-M-MHR-FIX	Fixing wedge to fix the hinged retaining frame (20 wedges on the block)
<b>Plug/Adapter</b>		
1636981	HC-M-MHR-PE16	Cable lug for HEAVYCON-MODULAR; PE connection extension to 16 mm <sup>2</sup> , for crimping with crimp pliers

**Diagrams/Drawings**

Dimensioned drawing

---



**Address**

PHOENIX CONTACT Inc., USA  
586 Fulling Mill Road  
Middletown, PA 17057, USA  
Phone (800) 888-7388  
Fax (717) 944-1625  
<http://www.phoenixcon.com>



© 2011 Phoenix Contact  
Technical modifications reserved;