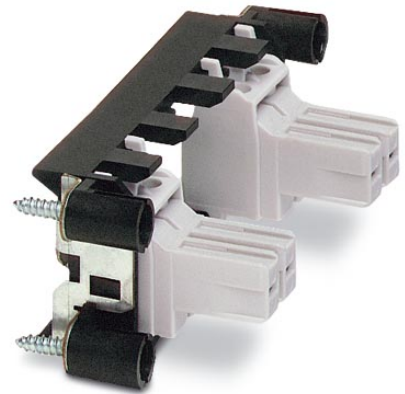


VC-M-TR2-PE

Order No.: 1853379

<http://eshop.phoenixcontact.de/phoenix/treeViewClick.do?UID=1853379>

Sleeve frame, with capacitive PE, for contact insert modules, bridging via metal housing, type 2, number of insert modules 3

Commercial data	
GTIN (EAN)	4017918144067
Note	Made-to-order
sales group	D210
Pack	5 pcs.
Customs tariff	85369010
Weight/Piece	0.03225 KG

Product notes

WEEE/RoHS-compliant since:
12/04/2006

<http://www.download.phoenixcontact.com>
Please note that the data given here has been taken from the online catalog. For comprehensive information and data, please refer to the user documentation. The General Terms and Conditions of Use apply to Internet downloads.

Certificates / Approvals



Certification

CUL, UL

Address

PHOENIX CONTACT Inc., USA
586 Fulling Mill Road
Middletown, PA 17057, USA
Phone (800) 888-7388
Fax (717) 944-1625
<http://www.phoenixcon.com>



© 2010 Phoenix Contact
Technical modifications reserved;