

SIM-EI- 60DC/48DC/100


Order No.: 2271086

The illustration shows version SIM-EI- 5DC/48DC/100



<http://eshop.phoenixcontact.de/phoenix/treeViewClick.do?UID=2271086>

Input optocoupler, with protection circuits in input and output circuits, input: 48 - 60 V DC, output: 8 - 48 V DC/100 mA

Commercial data	
GTIN (EAN)	 4 017918 054120
sales group	G150
Pack	10 pcs.
Customs tariff	85364190
Catalog page information	Page 330 (IF-2011)

Product notes

WEEE/RoHS-compliant since:
09/04/2006



<http://www.download.phoenixcontact.com>
Please note that the data given here has been taken from the online catalog. For comprehensive information and data, please refer to the user documentation. The General Terms and Conditions of Use apply to Internet downloads.

Technical data	
Input data	
Nominal input voltage U_N	60 V DC
Input voltage range in reference to U_N	0.9 ... 1.1
Input voltage range	48 V DC ... 60 V DC $\pm 10\%$
Switching threshold "0" signal in reference to U_N	≤ 0.25

Switching threshold "1" signal in reference to U_N	≥ 0.8
Typical input current at U_N	6.8 mA
Type of protection	Protection against polarity reversal
Protective circuit/component	Polarity protection diode
Transmission frequency	600 Hz

Output data

Output nominal voltage range	8 V DC ... 48 V DC
Limiting continuous current	100 mA
Voltage drop at max. limiting continuous current	1 V
Output circuit	2-wire, floating
Type of protection	Protection against polarity reversal
Protective circuit/component	Polarity protection diode

General data

Width	13 mm
Height	29 mm
Depth	25 mm
Ambient temperature (operation)	-20 °C ... 50 °C
Ambient temperature (storage/transport)	-20 °C ... 70 °C
Mounting position	Any
Assembly instructions	Can be aligned with 2 mm spacing
Operating mode	100% operating factor
Standards/regulations	DIN VDE 0110

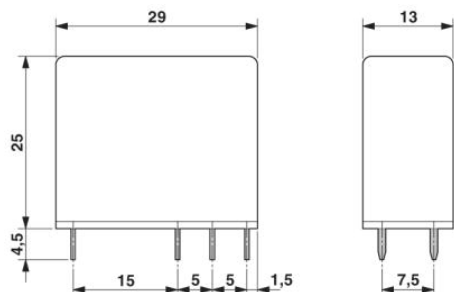
Certificates / Approvals



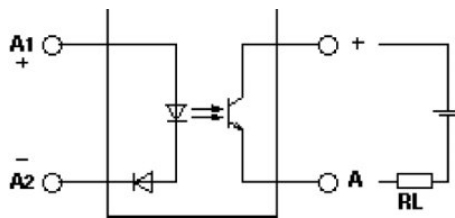
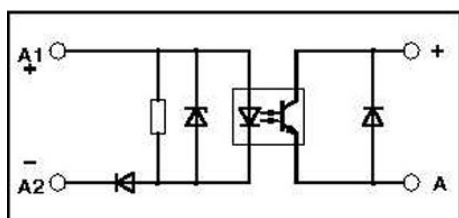
Certification GOST

Diagrams/Drawings

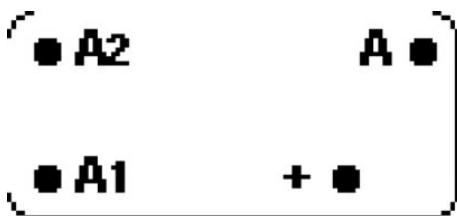
Dimensioned drawing



Circuit diagram



Schematic diagram



Address

PHOENIX CONTACT Inc., USA
586 Fulling Mill Road
Middletown, PA 17057, USA
Phone (800) 888-7388
Fax (717) 944-1625
<http://www.phoenixcon.com>



© 2011 Phoenix Contact
Technical modifications reserved;