

## ► General data



Pipe stub with two conductor protection for a 2-core floating signal circuit. Nominal voltage: 24 V DC

Order number	2818122
Type	S-PT1-2PE-24DC

Barcode number	4017918148355
Unit pack	1 Pcs.
Customs tariff	85363010900

## ► Technical data

### Protective circuit

Max. operating voltage $U_{max}$	28 V DC
Nominal current $I_N$	250 mA (25°C)
Operating current $I_C$ at $U_{C}$	5 $\mu$ A
Nominal discharge surge current $I_n$ (8/20) $\mu$ s, sym.	10 kA
Nominal discharge surge current $I_n$ (8/20) $\mu$ s, asym. (PE)	10 kA
Response time $t_A$ , sym.	1 ns
Response time $t_A$ , asym. (PE)	100 ns
Protection level $U_p$ , sym.	55 V
Protection level $U_p$ , asym. (PE)	550 V
Resistance in series	10 Ohm

**Connection, protective circuit**

Min. conductor cross section AWG/kcmil	16
Conductor cross section AWG/kcmil max	26
Min. conductor cross section, rigid	0.14 mm <sup>2</sup>
Conductor cross section, rigid max.	1.5 mm <sup>2</sup>
Conductor cross section flexible min.	0.14 mm <sup>2</sup>
Max. conductor cross section, flexible	15 mm <sup>2</sup>

---

**General**

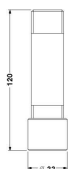
Ambient temperature (operation)	-40 °C ... 65 °C
---------------------------------	------------------

---

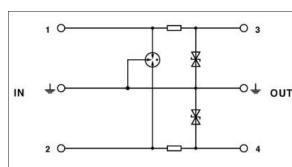
## ▸ Drawings

---

### Dimensioned drawing



### Circuit diagram



## ► Address

---

Phoenix Contact GmbH & Co. KG  
Flachsmarktstr. 8  
32825 Blomberg  
Germany  
Tel + 49 - (0) 52 35 - 3-00  
Fax + 49 - (0) 52 35 - 3-4 12 00  
[www.phoenixcontact.com](http://www.phoenixcontact.com)

© Phoenix Contact  
Technical modifications reserved