

CBT-SCHUKO

Order No.: 2857280

<http://eshop.phoenixcontact.de/phoenix/treeViewClick.do?UID=2857280>

Socket strip (5x) with surge protection and power display. Display switches off automatically when there is a malfunction due to overload. For country-specific use in: D, A, I, NL, S, E, N, FIN

Design
Award
Winner
2003

Product notes

WEEE/RoHS-compliant since:
07/12/2006



<http://www.download.phoenixcontact.com>
Please note that the data given here has been taken from the online catalog. For comprehensive information and data, please refer to the user documentation. The General Terms and Conditions of Use apply to Internet downloads.

Commercial data

GTIN (EAN)	4017918876166
sales group	J033
Pack	1 pcs.
Customs tariff	85363010
Weight/Piece	0.6689 KG
Catalog page information	Page 51 (TT-2009)

Technical data

Standards

Housing material	PA
Inflammability class acc. to UL 94	V0
Color	black

Standards for air and creepage distances	DIN VDE 0110-1
	IEC 60664-1: 1992-10
Degree of protection	IP20
Design	Socket strip
Mounting type	Socket strip
Ambient temperature (operation)	-20 °C ... 75 °C
For country-specific use in	D, I, NL, E, P
Direction of action	1L-N & N-PE
Width	81.00 mm
Height	42.00 mm
Length	271.00 mm

Protective circuit

IEC category	III
EN type	T3
Nominal voltage U_N	230 V AC
Arrester rated voltage U_C (L-N)	260 V AC
Arrester rated voltage U_C (L-PE)	260 V AC
Nominal frequency f_N	50 Hz (60 Hz)
Nominal current I_N	16 A ($\leq 30^\circ\text{C}$)
Discharge current to PE at U_C	$\leq 1 \mu\text{A}$
Nominal discharge surge current I_n (8/20) μs (L-N)	1.5 kA
Nominal discharge surge current I_n (8/20) μs (L-PE)	1.5 kA
Nominal discharge surge current I_n (8/20) μs (N-PE)	1.5 kA
Combined surge U_{oc}	4 kV
Protection level U_p (L-N)	$\leq 1.3 \text{ kV}$
Protection level U_p (L-PE)	$\leq 1.5 \text{ kV}$
Protection level U_p (N-PE)	$\leq 1.5 \text{ kV}$
Residual voltage at I_n , (L-N)	$\leq 1.2 \text{ kV}$
Residual voltage at I_n , (L-PE)	$\leq 650 \text{ V}$
Residual voltage at I_n , (N-PE)	$\leq 650 \text{ V}$
Response time t_A (L-N)	$\leq 25 \text{ ns}$
Response time t_A (L-PE)	$\leq 100 \text{ ns}$ (And N-PE)
Message surge protection faulty	Optical

Non-heating apparatus connection, power supply

Connection type IN	Grounding plug
Connection type OUT	Grounding socket

Connection, protective circuit

Standards/regulations	IEC 61643-1
	DIN EN 61643-11/A11

Certificates / Approvals

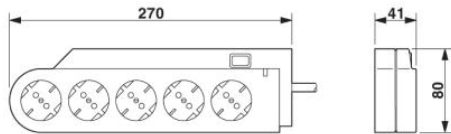


Certification

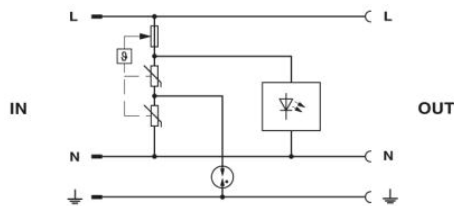
GOST

Diagrams/Drawings

Dimensioned drawing



Circuit diagram



Address

PHOENIX CONTACT Inc., USA
586 Fulling Mill Road
Middletown, PA 17057, USA
Phone (800) 888-7388
Fax (717) 944-1625
<http://www.phoenixcon.com>



© 2010 Phoenix Contact
Technical modifications reserved;