

Surge protection device - PT 2-TELE - 2882828

Please be informed that the data shown in this PDF Document is generated from our Online Catalog. Please find the complete data in the user's documentation. Our General Terms of Use for Downloads are valid (<http://phoenixcontact.com/download>)



Surge protective device, consisting of plug and base element, for protecting a double wire from analog and digital telecommunications interfaces (VDSL up to 50 Mbps).

Product Description


Surge protection plug for DIN rail mounting, 2-section pluggable, normal mode voltage coarse and fine protection for 2-conductor analog telecommunication interface as well as common mode voltage coarse protection to ground.

Why buy this product

- For ISDN Uk0 and DSL applications
- For analog telecommunications
- Two-piece, plug-in
- Broadband protection for telecommunications lines
- Worldwide use
- High discharge capacity
- Plugs can be checked with CHECKMASTER



Key Commercial Data

Packing unit	10 pc
GTIN	 4 046356 115148
Weight per Piece (excluding packing)	60.04 g
Custom tariff number	85363010
Country of origin	Germany

Technical data

Dimensions

Height	90 mm
Width	17.7 mm
Depth	65.5 mm
Horizontal pitch	1 Div.

Surge protection device - PT 2-TELE - 2882828

Technical data

Dimensions

Complete module height	90 mm
Complete module width	17.7 mm
Complete module depth	65.5 mm

Ambient conditions

Ambient temperature (operation)	-40 °C ... 85 °C
Degree of protection	IP20

General

Housing material	PA
Inflammability class according to UL 94	V0
Color	black
Standards for clearances and creepage distances	VDE 0110-1
	IEC 60644-1
Mounting type	DIN rail: 35 mm
Type	DIN rail module, two-section, divisible
Number of positions	2
Direction of action	Line-Line & Line-Earth Ground
Transmission speed	16 Mbit/s

Protective circuit

IEC test classification	C1
	C2
	C3
	D1
	B2
VDE requirement class	C1
	C2
	C3
	D1
	B2
Maximum continuous voltage U_C	185 V DC
	130 V AC
Maximum continuous voltage U_C (wire-wire)	185 V DC
	130 V AC
Maximum continuous voltage U_C (wire-ground)	185 V DC
	130 V AC
Nominal current I_N	450 mA (45°C)
Operating effective current I_C at U_C	$\leq 10 \mu A$
Standby power consumption P_C	$\leq 980 \text{ mVA}$
Residual current I_{PE}	$\leq 10 \mu A$
Nominal discharge current I_n (8/20) μs (Core-Core)	10 kA

Surge protection device - PT 2-TELE - 2882828

Technical data

Protective circuit

Nominal discharge current I_n (8/20) μ s (Core-Earth)	10 kA
Total surge current (8/20) μ s	20 kA
Max. discharge current I_{max} (8/20) μ s maximum (Core-Earth)	18 kA
Nominal pulse current I_{an} (10/700) μ s (Core-Core)	100 A
Nominal pulse current I_{an} (10/700) μ s (Core-Earth)	100 A
Impulse discharge current (10/350) μ s, peak value I_{imp}	1 kA
Output voltage limitation at 1 kV/ μ s (Core-Core) static	≤ 300 V
Output voltage limitation at 1 kV/ μ s (Core-Earth) static	≤ 300 V
Residual voltage at I_n (conductor-conductor)	≤ 160 V (C2 - 10 kV / 5 kA)
Residual voltage at I_n (conductor-ground)	≤ 200 V (C2 - 10 kV / 5 kA)
Voltage protection level U_p (core-core)	≤ 330 V (C2 - 10 kV / 5 kA)
	≤ 300 V (C2 - 2 kV/1 kA)
	≤ 270 V (C1 - 1 kV/500 A)
	≤ 300 V (B2 - 4 kV/100 A)
Voltage protection level U_p (core-ground)	≤ 300 V (C2 - 2 kV/1 kA)
Response time t_A (Core-Core)	≤ 500 ns
Response time t_A (Core-Earth)	≤ 500 ns
Input attenuation a_E , sym.	typ. 0.4 dB (≤ 5 MHz)
Cut-off frequency f_g (3 dB), sym. in 100 Ohm system	typ. 20 MHz
Capacity (Core-Core)	typ. 30 pF
Capacity (Core-Earth)	typ. 30 pF
Resistance in series	2.2 $\Omega \pm 10$ %
Impulse durability (conductor-conductor)	B2 - 4 kV/100 A
	C1 - 1 kV/500 A
	C2 - 10 kV/5 kA
	C3 - 2 kV/25 A
	D1 - 1 kA
Impulse durability (conductor-ground)	B2 - 4 kV/100 A
	C1 - 1 kV/500 A
	C2 - 10 kV/5 kA
	C3 - 2 kV/25 A
	D1 - 1 kA

Connection data

Connection method	Screw connection
Connection type IN	Screw terminal blocks
Connection type OUT	Screw terminal blocks
Screw thread	M3
Tightening torque	0.8 Nm
Stripping length	8 mm
Conductor cross section flexible min.	0.2 mm ²

Surge protection device - PT 2-TELE - 2882828

Technical data

Connection data

Conductor cross section flexible max.	2.5 mm ²
Conductor cross section solid min.	0.2 mm ²
Conductor cross section solid max.	4 mm ²
Conductor cross section AWG min.	24
Conductor cross section AWG max.	12

Standards and Regulations

Standards/regulations	IEC 61643-21
-----------------------	--------------

Classifications

eCl@ss

eCl@ss 4.0	27140201
eCl@ss 4.1	27130801
eCl@ss 5.0	27130801
eCl@ss 5.1	27130801
eCl@ss 6.0	27130807
eCl@ss 7.0	27130807
eCl@ss 8.0	27130807

ETIM

ETIM 2.0	EC000943
ETIM 3.0	EC000943
ETIM 4.0	EC000943
ETIM 5.0	EC000943

UNSPSC

UNSPSC 6.01	30212010
UNSPSC 7.0901	39121610
UNSPSC 11	39121610
UNSPSC 12.01	39121610
UNSPSC 13.2	39121620

Approvals

Approvals

Approvals

EAC / EAC

Ex Approvals

Surge protection device - PT 2-TELE - 2882828

Approvals

Approvals submitted

Approval details

EAC

EAC

Accessories

Accessories

Labeled terminal marker

Zack marker strip - ZB 5,LGS:FORTL.ZAHLEN - 1050017



Zack marker strip, Strip, white, labeled, Printed horizontally: Consecutive numbers 1 - 10, 11 - 20, etc. up to 491 - 500, Mounting type: Snap into tall marker groove, for terminal block width: 5.2 mm, Lettering field: 5.15 x 10.5 mm

Terminal marking

Zack marker strip - ZB 5,8:UNBEDRUCKT - 2715209



Zack marker strip, Strip, white, unlabeled, can be labeled with: Plotter, Mounting type: Snap into tall marker groove, for terminal block width: 5.8 mm, Lettering field: 5.75 x 10.5 mm

Additional products

Shield connection - SSA 3-6 - 2839295



shield fast connections for conductor diameter 3 - 6 mm. Potential connection cable: 200 mm, black

Surge protection device - PT 2-TELE - 2882828

Accessories

Shield connection - SSA 5-10 - 2839512



Shield fast connection for conductor diameters 5 - 10 mm. Potential connection cable: 200 mm, black

Spare parts

Surge protection plug - PT 2-TELE-ST - 2838733



Surge protection plug for base element, for protecting a double conductor of analog telecommunication interfaces.

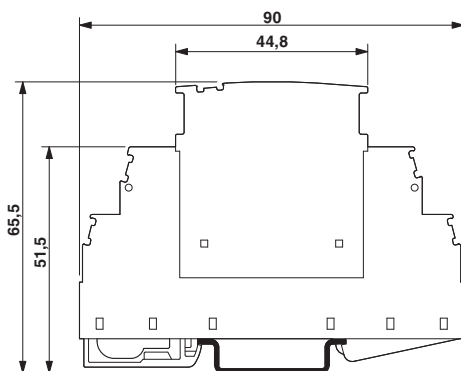
Surge protection base element - PT 1X2-BE - 2856113



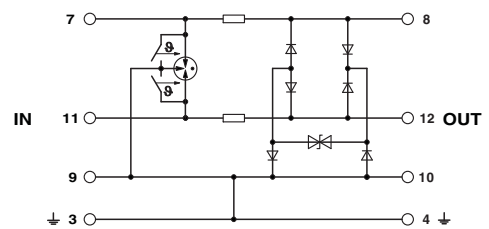
Base element for protective plug PT with protective circuit for a 2-core floating signal circuit. Mounting on NS 35/7.5 und NS 35/15, housing width: 17.5 mm.

Drawings

Dimensional drawing



Circuit diagram



Surge protection device - PT 2-TELE - 2882828

Application drawing

