


DT-UFB-485/BS

Order No.: 2920612



<http://eshop.phoenixcontact.de/phoenix/treeViewClick.do?UID=2920612>

D-SUB-9 attachment plug with surge protection for RS-485 interfaces. Can alternatively be snapped onto DIN rails.

Commercial data	
GTIN (EAN)	
sales group	J400
Pack	1 pcs.
Customs tariff	85363010
Catalog page information	Page 147 (TT-2011)

Product notes

WEEE/RoHS-compliant since: 12/01/2006



<http://www.download.phoenixcontact.com>
Please note that the data given here has been taken from the online catalog. For comprehensive information and data, please refer to the user documentation. The General Terms and Conditions of Use apply to Internet downloads.

Technical data

General	
Housing material	Zinc die-cast
Color	silver/black
Standards for air and creepage distances	IEC 60664-1: 1992-10
	VDE 0110-1
Total surge current (8/20) μ s	10 kA

Ambient temperature (operation)	-40 °C ... 85 °C
Mounting type	Connection-specific attachment plug and DIN rail, 35 mm
Design	Attachment plug for DIN rail mounting
Number of positions	5
Degree of protection	IP20
Direction of action	Line-Line & Line-Ground/Shield
Width	25.00 mm
Height	63.00 mm
Length	110.00 mm
Protective circuit	
IEC category	B2
	C1
	C2
	C3
	D1
VDE requirement class	B2
	C1
	C2
	C3
	D1
Maximum continuous operating voltage U_c	12 V DC
Maximum continuous voltage U_C (wire-wire)	12 V DC
Maximum continuous voltage U_c (wire-ground)	90 V DC
Nominal current I_N	≤ 380 mA (25°C)
Operating effective current I_c at U_c	≤ 1 μ A
Ground conductor current I_{PE}	≤ 5 μ A
Nominal discharge surge current I_n (8/20) μ s (Core-Core)	≤ 5 kA
Nominal discharge surge current I_n (8/20) μ s (Core-Earth)	≤ 5 kA
Total surge current (8/20) μ s	10 kA
Output voltage limitation at 1 kV/ μ s (Core-Earth) spike	≤ 700 V
Output voltage limitation at 1 kV/ μ s (Core-Core) static	≤ 25 V
Output voltage limitation at 1 kV/ μ s (Core-Earth) static	≤ 700 V

Output voltage limitation at 1 kV/ μ s (Core-GND) static	≤ 25 V
Residual voltage at I_n , (conductor-conductor)	≤ 25 V
Residual voltage at I_n , (conductor-ground)	≤ 55 V
Residual voltage at I_n , (conductor-GND)	≤ 25 V
Protection level U_p (Core-Core)	≤ 30 V (B2 - 100 A)
	≤ 30 V (C1 - 500 A)
	≤ 40 V (C2 - 5 kA)
Protection level U_p (Core-Earth)	≤ 700 V (B2 - 100 A)
	≤ 700 V (C1 - 500 A)
	≤ 750 V (C2 - 5 kA)
Response time t_A (Core-Core)	≤ 100 ns
Response time t_A (Core-Earth)	≤ 100 ns
Input attenuation aE, sym.	Typ. 0.3 dB (≤ 30 MHz)
	Typ. 0.3 dB (≤ 7 MHz / 150 Ω)
	Typ. 0.3 dB (≤ 2 MHz / 600 Ω)
Cut-off frequency f_g (3 dB), sym. in 100 Ohm system	Typ. 50 MHz
Resistance in series	3.3 Ω 10 %
Surge carrying capacity in acc. with IEC 61643-21 (Core-Core)	C1 (1 kV / 500 A)
	C2 (10 kV/5 kA)
	B2 (4 kV / 100 A)
Surge carrying capacity in acc. with IEC 61643-21 (Core-Earth)	B2 (4 kV / 100 A)
	C1 (1 kV / 500 A)
	C2 (10 kV/5 kA)
	D1 (1 kA)

Connection data

Connection method	D-SUB-9
Connection type IN	D-SUB-9 socket
Connection type OUT	D-SUB-9 connector

Connection, equipotential bonding

Connection method	Cable connection
-------------------	------------------

Connection, protective circuit

Standards/regulations	IEC 61643-21
	DIN EN 61643-21

Certificates / Approvals



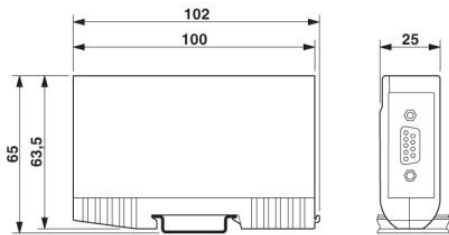
Certification GOST

Accessories

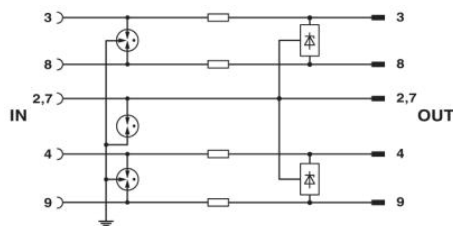
Item	Designation	Description
General		
1656233	VS-09-DSUB-20-LI-1,0	Assembled D-SUB cable shielded, 9-pos., stranded (7-wire), cable color RAL 7000 (gray), IP20 degree of protection, head 1 with socket shell 1 and straight cable outlet, head 2 with pin shell 1 and straight cable outlet, length: 1 m

Diagrams/Drawings

Dimensioned drawing



Circuit diagram



Address

PHOENIX CONTACT Inc., USA
586 Fulling Mill Road
Middletown, PA 17057, USA
Phone (800) 888-7388
Fax (717) 944-1625
<http://www.phoenixcon.com>



© 2012 Phoenix Contact
Technical modifications reserved;