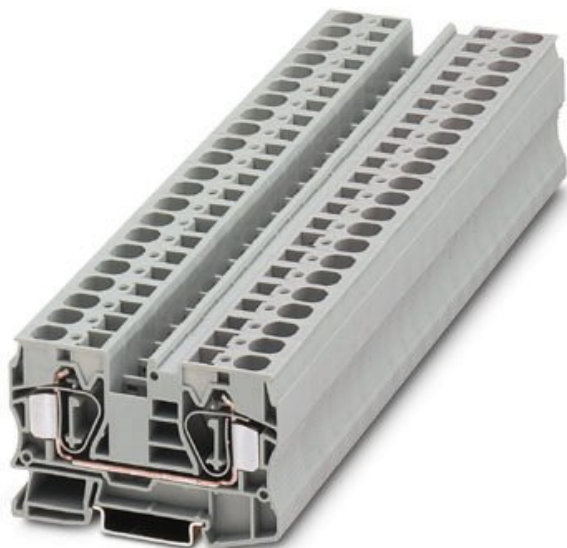


Please note that the data given here has been taken from the online catalog. For comprehensive information and data, please refer to the user documentation at <http://www.download.phoenixcontact.com>. The General Terms and Conditions of Use apply to Internet downloads.

► Extract from the online catalog



Feed-through terminal blocks with spring-cage connection, cross section: 1.5 - 16 mm², width: 12 mm, color: gray

Order No.	3036149
Ord designation	ST 16
EAN	4017918819309
Pack	50 Pcs.
Customs tariff	85369010
Catalog page information	Page 52 (CL-2005)

► Technical data

General

Number of levels	1
Number of connections	2
Color	gray
Insulating material	PA
Inflammability class acc. to UL 94	V0

Dimensions

Width	12 mm
Length	80 mm
Height NS 35/7,5	51 mm
Height NS 35/15	58.5 mm

Technical data

Maximum load current	90 A (with 25 mm ² conductor cross section)
Rated surge voltage	8 kV
Contamination class	3
Surge voltage category	III
Insulating material group	I
Connection in acc. with standard	IEC/ DIN VDE
Nominal current I_N	90 A
Nominal voltage U_N	800 V
Open side panel	ja

Connection data

Conductor cross section, rigid min.	1.5 mm ²
Conductor cross section, rigid max.	25 mm ²
Conductor cross section flexible min.	0.2 mm ²
Conductor cross section, flexible max.	16 mm ²
Conductor cross section AWG/kcmil min.	24
Conductor cross section AWG/kcmil max	4
Conductor cross section flexible, with ferrule without plastic sleeve min.	1.5 mm ²
Conductor cross section flexible, with ferrule without plastic sleeve max.	16 mm ²
Conductor cross section flexible, with ferrule with plastic sleeve min.	1.5 mm ²
Conductor cross section flexible, with ferrule with plastic sleeve max.	16 mm ²
2 conductors with same cross section, flexible, TWIN ferrules with plastic sleeve, min.	1.5 mm ²
2 conductors with identical cross section, flexible TWIN ferrules with plastic sleeve, max.	4 mm ²
Type of connection	Spring-cage connection
Stripping length	18 mm
Internal cylindrical gage	A7

► Certificates

CUL

Nominal voltage U_N	600 V
Nominal current I_N	85 A
AWG/kcmil	16-4

UL

Nominal voltage U_N	600 V
Nominal current I_N	85 A
AWG/kcmil	16-4

► Drawings

Approval logo



► Accessories

Item	Designation	Description
Assembly		
3036657	D-ST 16	Cover, width: 2.2 mm, color: gray
Bridges		
3005950	FBS 2-12	Plug-in bridge for cross connections in the bridge shaft, 2-pos., color: Red
3030886	RB ST 16-(2,5/4)	Adapter bridge, for connecting ST-16 spring-cage terminal blocks with ST-2.5 or ST-4 spring-cage terminal blocks
General		
0812146	ZB 12,LGS:L1-N,PE	Zack strip, printed horizontally: 10-section, L1, L2, L3, N, PE, L1, L2, L3, N, PE, color: white
0812120	ZB 12:UNPRINTED	Zack strip, unprinted: 10-section, for individual labeling with M-PEN, ZB-T or CMS system, sufficient for 100 terminal blocks per pack
Marking		
0807986	WAZ 12	Warning cover, for the operating shafts of the ST "mini-spring" spring-cage terminal block, width: 12 mm, color: yellow
0812133	ZB 12:SO/CMS	Zack strip, 10-section, divisible, special printing, marking according to customer requirements
0810038	ZBF 12:SO/CMS	Zack marker strip, flat, in 12 mm pitch, printed according to customer requirements, 5-section, divisible, color: white
0809735	ZBF 12:UNBEDRUCKT	Zack strip, flat, unprinted, 5-section, divisible, for labeling by the customer
Plug/Adapter		
0201731	MPS-IH BK	Insulating sleeve (black), for MPS metal part to be ordered separately (0201744)
0201689	MPS-IH BU	Insulating sleeve (blue), for MPS metal part to be ordered separately (0201744)
0201702	MPS-IH GN	Insulating sleeve (green), for MPS metal part to be ordered separately (0201744)
0201728	MPS-IH GY	Insulating sleeve (gray), for MPS metal part to be ordered separately (0201744)
0201676	MPS-IH RD	Insulating sleeve (red), for MPS metal part to be ordered separately (0201744)
0201715	MPS-IH VT	Insulating sleeve (violet), for MPS metal part to be ordered separately (0201744)
0201663	MPS-IH WH	Insulating sleeve (white), for MPS metal part to be ordered separately (0201744)
0201692	MPS-IH YE	Insulating sleeve (yellow), for MPS metal part to be ordered separately (0201744)
0201744	MPS-MT	Test plug, consisting of: Metal part for 2.3 mm diameter socket hole
3036709	PS-4/E	Individual test plug, for ST and QT terminal blocks, can be labeled with ZBFM 4

ST 16



Tools

1206612

SZF 3-1,0X5,5

Screwdriver, blade: 1.0 x 5.5 x 100 mm, length 180 mm

► Address

PHOENIX CONTACT GmbH & Co. KG
Flachsmarktstr. 8
32825 Blomberg
Germany
Phone +49 5235 3 00
Fax +49 5235 3 41200
<http://www.phoenixcontact.com>
Phoenix Contact
Technical modifications reserved;