

# Ring cable lug - C-RC 70/M16 DIN - 3240119


Please be informed that the data shown in this PDF Document is generated from our Online Catalog. Please find the complete data in the user's documentation. Our General Terms of Use for Downloads are valid (<http://phoenixcontact.com/download>)



Ring cable lug, non-insulated, 70 mm², M16



## Key Commercial Data

|                        |   |
|------------------------|---|
| Packing unit           | 100 pc  |
| Minimum order quantity | 100 pc  |
| GTIN                   | <br>4 046356 453363 |
| GTIN                   | 4046356453363   |

## Technical data

### Dimensions

|   |       |
|---|-------|
| Length (b)  | 56 mm |
| Width (a)   | 28 mm |
| Maximum stripping length                                  | 21 mm |
| Length of insulation sleeve (c)                           | 18 mm |
| Inner dimension of the insulating collar (d)              | 13 mm |
| Distance between the center and the insulation sleeve (e) | 24 mm |
| Inner diameter (f)  | 17 mm |
| Material thickness (g)                                    | 2 mm  |

### Ambient conditions

|                                 |        |
|---------------------------------|--------|
| Ambient temperature (operation) | 110 °C |
|---------------------------------|--------|

### General

|                  |            |
|------------------|------------|
| Color            | silver     |
| Stripping length | 21 mm      |
| Material         | Copper     |
| Coating          | tin-plated |

# Ring cable lug - C-RC 70/M16 DIN - 3240119

## Technical data

### Standards and Regulations

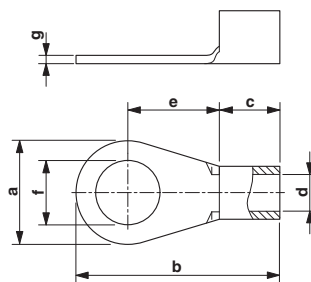
|                              |           |
|------------------------------|-----------|
| Design according to standard | DIN 46234 |
|------------------------------|-----------|

### Environmental Product Compliance

|            |   |
|------------|---|
| China RoHS | Environmentally friendly use period: unlimited = EFUP-e |
|            | No hazardous substances above threshold values          |

## Drawings

Dimensional drawing



## Approvals

### Approvals

---

Approvals

EAC

---

Ex Approvals

---

### Approval details

|     |  |               |
|-----|--|---------------|
| EAC |  | EAC-Zulassung |
|-----|--|---------------|

Phoenix Contact 2019 © - all rights reserved  
<http://www.phoenixcontact.com>

PHOENIX CONTACT GmbH & Co. KG  
Flachmarktstr. 8  
32825 Blomberg  
Germany  
Tel. +49 5235 300  
Fax +49 5235 3 41200  
<http://www.phoenixcontact.com>