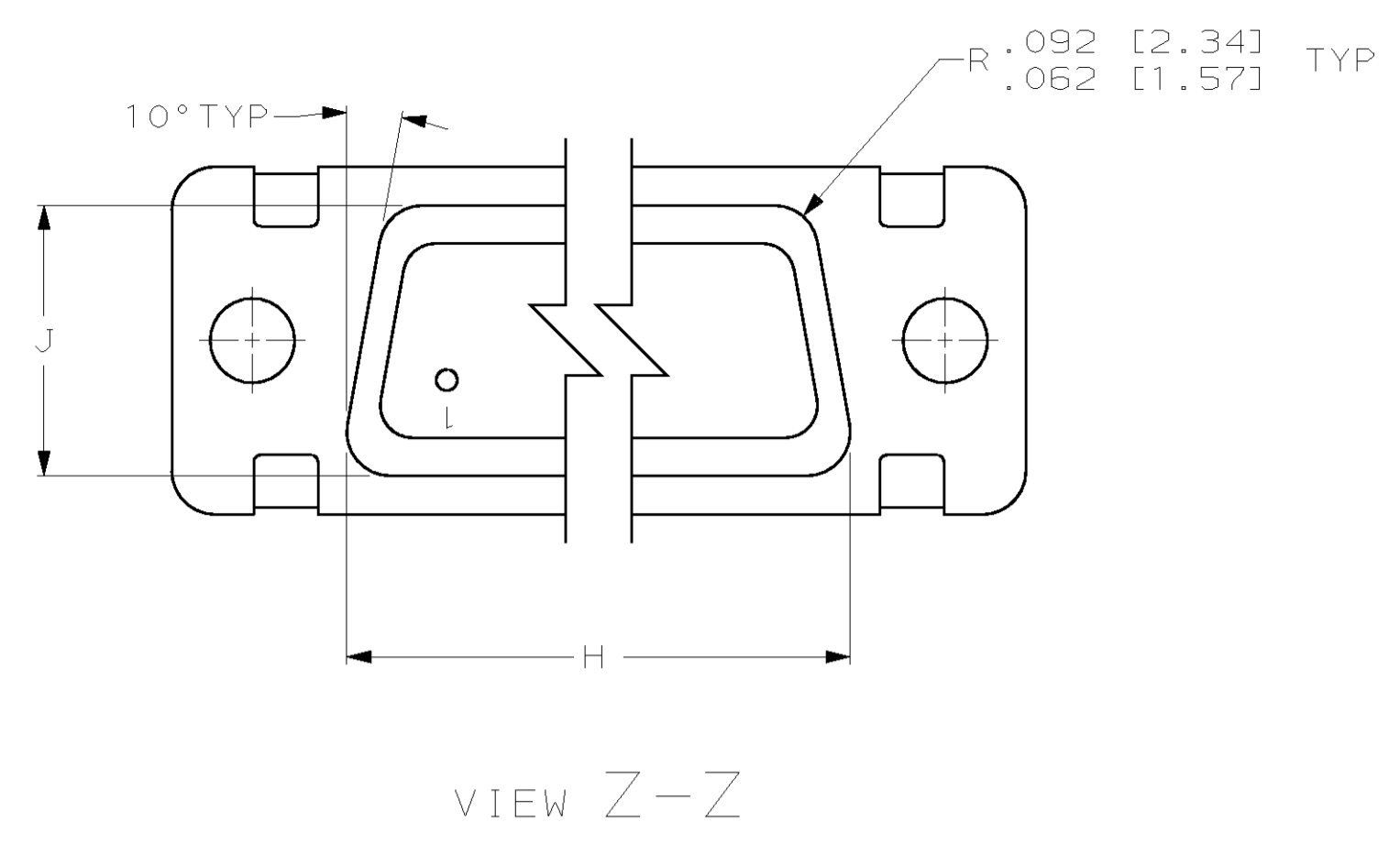
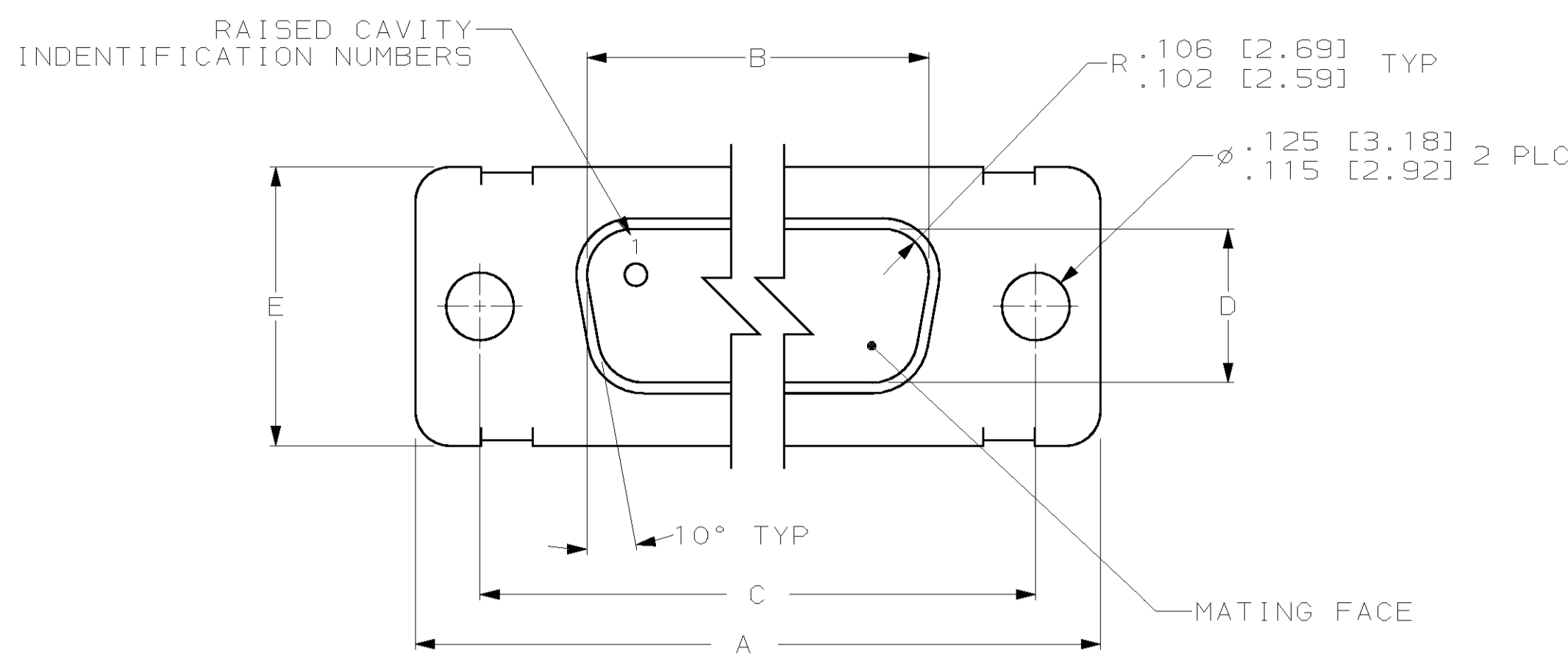
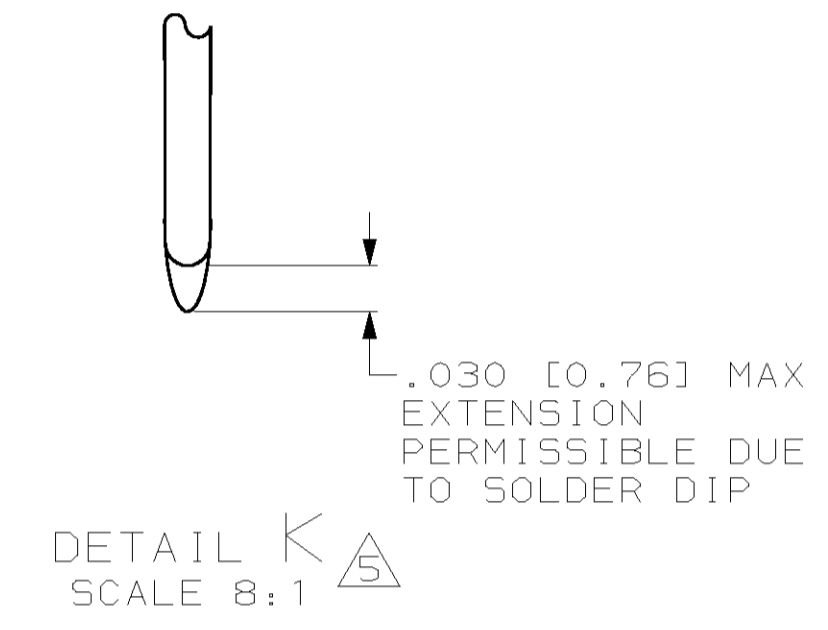
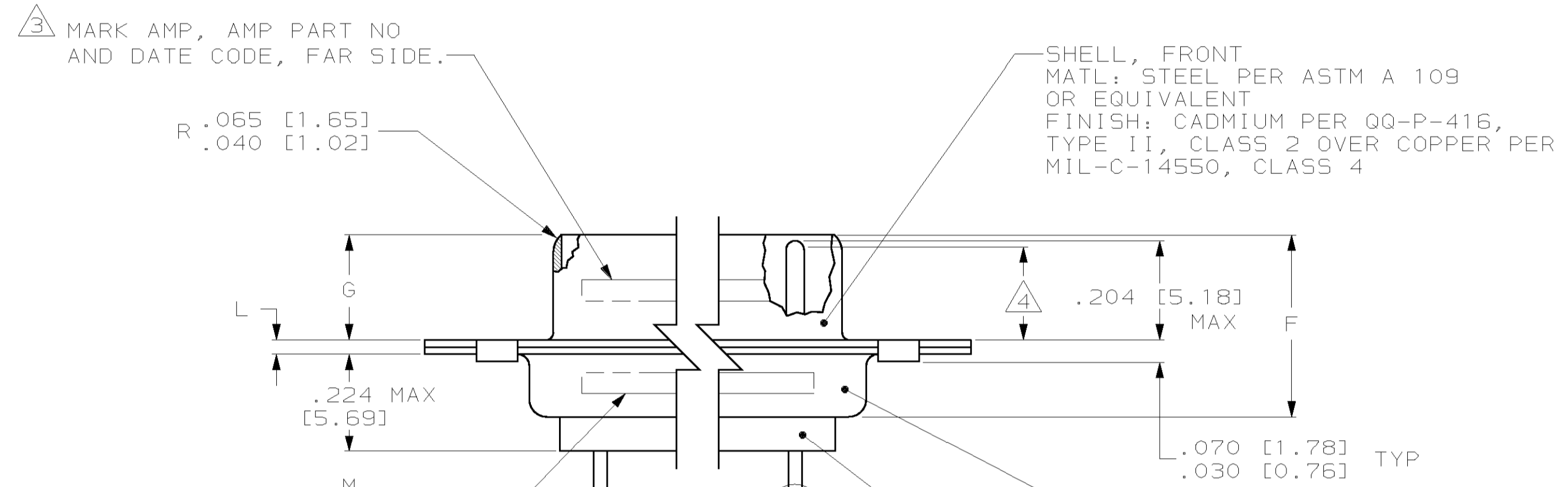


LOC	DIST	REV	PER	DATE	BY	APVD
DF	DO					
		D	REV PER	0630-0321-00	11-00	CT CB

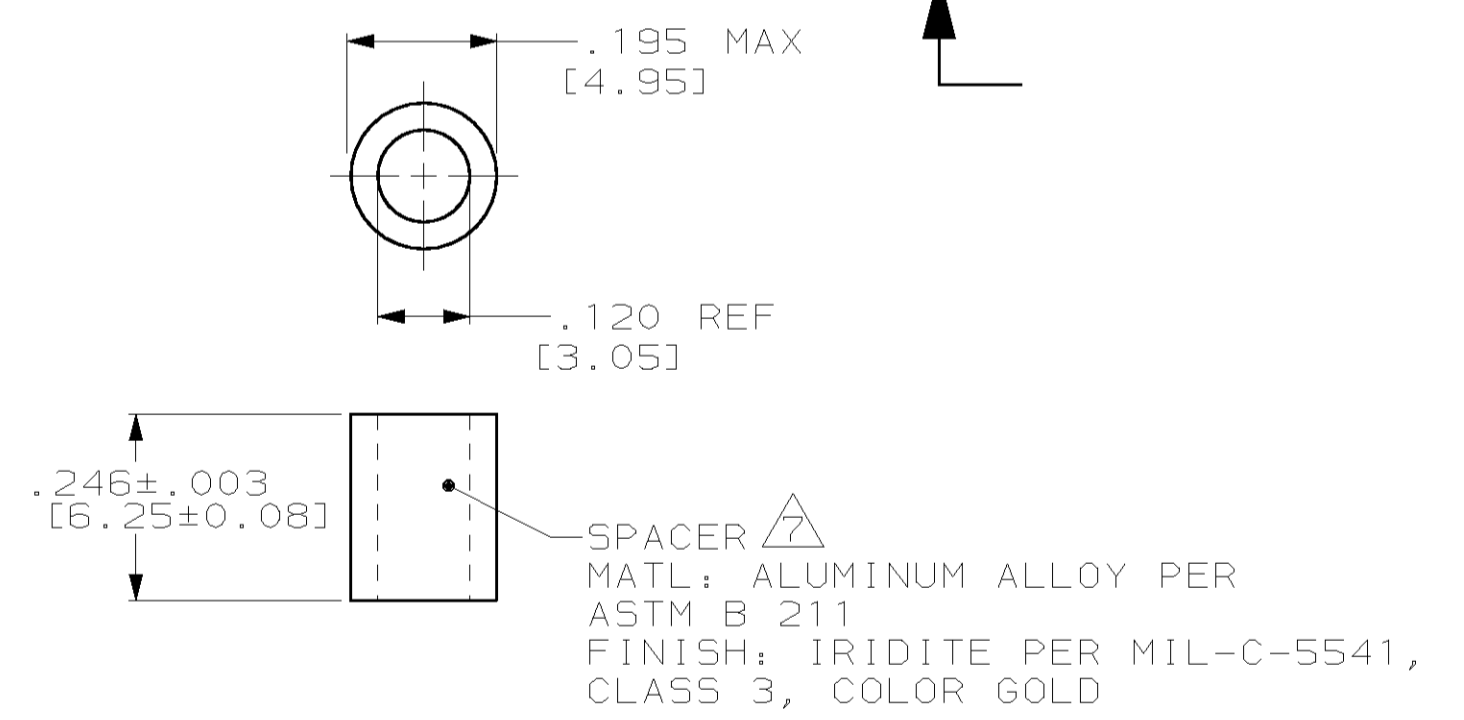


- 1 SEE SHEET 2 FOR RECOMMENDED P.C. BOARD LAYOUT. TRUE POSITION TOLERANCE FOR P.C. BOARD LAYOUT IS .010 [0.25] AT MAX MATERIAL CONDITION. SUGGESTED BOARD THICKNESS IS .094 [2.39]
- 2 THE CONNECTORS DESCRIBED IN THIS DOCUMENT MEET THE REQUIREMENTS OF MIL-C-24308 AND MATE WITH ANY RECEPTACLE CONNECTOR WITH SAME INSERT ARRANGEMENT.
- 3 MARK WITH .047 [1.19]-.062 [1.57] HIGH CHARACTERS. FAR SIDE REFERS TO THE WIDE SIDE OF THE KEYSTONE. NEAR SIDE REFERS TO THE NARROW SIDE OF THE KEYSTONE. IF THE REAR SHELL IS TOO SMALL FOR THE ENTIRE MILITARY PART NUMBER, MARKING SHALL BE LOCATED AS FOLLOWS:
 - A. "M24308" ON FRONT SHELL, FAR SIDE.
 - B. SLASH SHEET AND DASH NUMBER ON REAR SHELL, FAR SIDE.
 - C. "AMP" AND DATE CODE ON FRONT SHELL, NEAR SIDE.
 - D. AMP PART NUMBER ON REAR SHELL, NEAR SIDE.
 IF THE FRONT SHELL IS TOO SMALL FOR "AMP", AMP PART NUMBER AND DATE CODE, THEN SPLIT AS FOLLOWS:
 - A. AMP PART NUMBER ON REAR SHELL, NEAR SIDE.
 - B. "AMP" AND DATE CODE ON FRONT SHELL, NEAR SIDE.
 - C. MILITARY PART NUMBER ON REAR SHELL, FAR SIDE.



- 4 MARK AMP, AMP PART NO AND DATE CODE, FAR SIDE.
- 5 MARK MILITARY PART NO, FAR SIDE
- SHELL, FRONT
MATL: STEEL PER ASTM A 109 OR EQUIVALENT
FINISH: CADMIUM PER QQ-P-416, TYPE II, CLASS 2 OVER COPPER PER MIL-C-14550, CLASS 4
- SHELL, REAR
MATL: STEEL PER ASTM A 109 OR EQUIVALENT
FINISH: CADMIUM PER QQ-P-416, TYPE II, CLASS 2 OVER COPPER PER MIL-C-14550, CLASS 4
- INSERT ASSEMBLY
MATL: POLYPHENYLENE SULFIDE (PPS) PER MIL-M-24519, TYPE: GST-40F OR POLYESTER PER MIL-M-24519, TYPE: GLCP-30F
COLOR, BLACK
- CONTACT
MATL: BRASS ALLOY PER ASTM B 16, OR BERYLLIUM COPPER 173, 1/2 HARD PER ASTM-B-197.
FINISH: GOLD PER MIL-G-45204, TYPE II, GRADE C, CLASS 1 OVER NICKEL PER QQ-N-290, .000050 MIN THICK

- 4 REQUIREMENT FOR FULL PIN DIAMETER EXTENSION: .159 [4.04] MIN, SHELL SIZES 1 AND 2. .150 [3.81] MIN, SHELL SIZES 3, 4, AND 5.
- 5 SOLDER DIP PER MIL-STD-2000 COMPOSITION Sn63 CONFORMING TO QQ-S-571. COVERAGE SHALL BE COMPLETE TO A DISTANCE .020 [0.51] MAX FROM INSERT ASSEMBLY.
- 6 THE SOLDER DIP PROCESS IS PERFORMED SUBSEQUENT TO THE COMPLETION OF PRODUCTION OF THE MILITARY QUALIFIED CONNECTOR. DIMENSIONS APPLY PRIOR TO SOLDER DIPPING.
- 7 SPACERS (QTY 2) ARE SUPPLIED WITH CONNECTORS (NOT ATTACHED TO THE CONNECTOR).
- 8 DIMENSIONS AND TOLERANCES PER ANSI Y14.5M-1982.
- 9 THIS DRAWING SHALL BE INTERPRETED IN ACCORDANCE WITH APPLICABLE STANDARDS LISTED IN MIL-STD-100.



N	M	L	J	H	G	F	E	D	C	B	A	INSERT ARRANGEMENT	NO OF POS	SHELL SIZE	MILITARY P/N ON CONNECTOR	AMP P/N ON CONNECTOR	PART NUMBER
		.049 [1.24] .029 [0.74]	.544 [13.82] .524 [13.31]	2.188 [55.58] 2.168 [55.07]	.236 [5.99] .224 [5.69]	.436 [11.07] .416 [10.57]	.620 [15.75] .590 [14.99]	.446 [11.33] .436 [11.07]	2.411 [61.24] 2.401 [60.99]	2.084 [52.93] 2.074 [52.68]	2.650 [67.31] 2.620 [66.55]	MS18277-1	50	5	M24308/24-5F	1218124-5	1-1218124-0
		.049 [1.24] .029 [0.74]	.432 [10.97] .412 [10.46]	2.282 [57.96] 2.262 [57.45]	.236 [5.99] .224 [5.69]	.436 [11.07] .416 [10.57]	.509 [12.93] .479 [12.17]	.334 [8.48] .324 [8.23]	2.505 [63.63] 2.495 [63.37]	2.187 [55.55] 2.177 [55.30]	2.744 [69.70] 2.714 [68.94]	MS18276-1	37	4	M24308/24-4F	1218124-4	1218124-9
		.040 [1.02] .020 [0.51]	.432 [10.97] .412 [10.46]	1.635 [41.53] 1.615 [41.02]	.238 [6.05] .229 [5.82]	.432 [10.97] .412 [10.46]	.509 [12.93] .479 [12.17]	.334 [8.48] .324 [8.23]	1.857 [47.17] 1.847 [46.91]	1.539 [39.09] 1.529 [38.84]	2.103 [53.42] 2.073 [52.65]	MS18275-1	25	3	M24308/24-3F	1218124-3	1218124-8
		.040 [1.02] .020 [0.51]	.432 [10.97] .412 [10.46]	1.093 [27.76] 1.073 [27.25]	.238 [6.05] .229 [5.82]	.432 [10.97] .412 [10.46]	.509 [12.93] .479 [12.17]	.334 [8.48] .324 [8.23]	1.317 [33.45] 1.307 [33.20]	.999 [25.37] .989 [25.12]	1.556 [39.52] 1.526 [38.76]	MS18274-1	15	2	M24308/24-2F	1218124-2	1218124-7
		.049 [1.24] .029 [0.74]	.544 [13.82] .524 [13.31]	2.188 [55.58] 2.168 [55.07]	.236 [5.99] .224 [5.69]	.436 [11.07] .416 [10.57]	.620 [15.75] .590 [14.99]	.446 [11.33] .436 [11.07]	2.411 [61.24] 2.401 [60.99]	2.084 [52.93] 2.074 [52.68]	2.650 [67.31] 2.620 [66.55]	MS18277-1	50	5	M24308/24-5F	1218124-5	1218124-5
		.049 [1.24] .029 [0.74]	.432 [10.97] .412 [10.46]	2.282 [57.96] 2.262 [57.45]	.236 [5.99] .224 [5.69]	.436 [11.07] .416 [10.57]	.509 [12.93] .479 [12.17]	.334 [8.48] .324 [8.23]	2.505 [63.63] 2.495 [63.37]	2.187 [55.55] 2.177 [55.30]	2.744 [69.70] 2.714 [68.94]	MS18276-1	37	4	M24308/24-4F	1218124-4	1218124-4
		.040 [1.02] .020 [0.51]	.432 [10.97] .412 [10.46]	1.635 [41.53] 1.615 [41.02]	.238 [6.05] .229 [5.82]	.432 [10.97] .412 [10.46]	.509 [12.93] .479 [12.17]	.334 [8.48] .324 [8.23]	1.857 [47.17] 1.847 [46.91]	1.539 [39.09] 1.529 [38.84]	2.103 [53.42] 2.073 [52.65]	MS18275-1	25	3	M24308/24-3F	1218124-3	1218124-3
		.040 [1.02] .020 [0.51]	.432 [10.97] .412 [10.46]	1.093 [27.76] 1.073 [27.25]	.238 [6.05] .229 [5.82]	.432 [10.97] .412 [10.46]	.509 [12.93] .479 [12.17]	.334 [8.48] .324 [8.23]	1.317 [33.45] 1.307 [33.20]	.999 [25.37] .989 [25.12]	1.556 [39.52] 1.526 [38.76]	MS18274-1	15	2	M24308/24-2F	1218124-2	1218124-2
		.049 [1.24] .029 [0.74]	.544 [13.82] .524 [13.31]	2.188 [55.58] 2.168 [55.07]	.236 [5.99] .224 [5.69]	.436 [11.07] .416 [10.57]	.620 [15.75] .590 [14.99]	.446 [11.33] .436 [11.07]	2.411 [61.24] 2.401 [60.99]	2.084 [52.93] 2.074 [52.68]	2.650 [67.31] 2.620 [66.55]	MS18277-1	50	5	M24308/24-5F	1218124-5	1218124-5
		.049 [1.24] .029 [0.74]	.432 [10.97] .412 [10.46]	2.282 [57.96] 2.262 [57.45]	.236 [5.99] .224 [5.69]	.436 [11.07] .416 [10.57]	.509 [12.93] .479 [12.17]	.334 [8.48] .324 [8.23]	2.505 [63.63] 2.495 [63.37]	2.187 [55.55] 2.177 [55.30]	2.744 [69.70] 2.714 [68.94]	MS18276-1	37	4	M24308/24-4F	1218124-4	1218124-4
		.040 [1.02] .020 [0.51]	.432 [10.97] .412 [10.46]	1.635 [41.53] 1.615 [41.02]	.238 [6.05] .229 [5.82]	.432 [10.97] .412 [10.46]	.509 [12.93] .479 [12.17]	.334 [8.48] .324 [8.23]	1.857 [47.17] 1.847 [46.91]	1.539 [39.09] 1.529 [38.84]	2.103 [53.42] 2.073 [52.65]	MS18275-1	25	3	M24308/24-3F	1218124-3	1218124-3
		.040 [1.02] .020 [0.51]	.432 [10.97] .412 [10.46]	1.093 [27.76] 1.073 [27.25]	.238 [6.05] .229 [5.82]	.432 [10.97] .412 [10.46]	.509 [12.93] .479 [12.17]	.334 [8.48] .324 [8.23]	1.317 [33.45] 1.307 [33.20]	.999 [25.37] .989 [25.12]	1.556 [39.52] 1.526 [38.76]	MS18274-1	15	2	M24308/24-2F	1218124-2	1218124-2
		.049 [1.24] .029 [0.74]	.544 [13.82] .524 [13.31]	2.188 [55.58] 2.168 [55.07]	.236 [5.99] .224 [5.69]	.436 [11.07] .416 [10.57]	.620 [15.75] .590 [14.99]	.446 [11.33] .436 [11.07]	2.411 [61.24] 2.401 [60.99]	2.084 [52.93] 2.074 [52.68]	2.650 [67.31] 2.620 [66.55]	MS18277-1	50	5	M24308/24-5F	1218124-5	1218124-5
		.049 [1.24] .029 [0.74]	.432 [10.97] .412 [10.46]	2.282 [57.96] 2.262 [57.45]	.236 [5.99] .224 [5.69]	.436 [11.07] .416 [10.57]	.509 [12.93] .479 [12.17]	.334 [8.48] .324 [8.23]	2.505 [63.63] 2.495 [63.37]	2.187 [55.55] 2.177 [55.30]	2.744 [69.70] 2.714 [68.94]	MS18276-1	37	4	M24308/24-4F	1218124-4	1218124-4
		.040 [1.02] .020 [0.51]	.432 [10.97] .412 [10.46]	1.635 [41.53] 1.615 [41.02]	.238 [6.05] .229 [5.82]	.432 [10.97] .412 [10.46]	.509 [12.93] .479 [12.17]	.334 [8.48] .324 [8.23]	1.857 [47.17] 1.847 [46.91]	1.539 [39.09] 1.529 [38.84]	2.103 [53.42] 2.073 [52.65]	MS18275-1	25	3	M24308/24-3F	1218124-3	1218124-3
		.040 [1.02] .020 [0.51]	.432 [10.97] .412 [10.46]	1.093 [27.76] 1.073 [27.25]	.238 [6.05] .229 [5.82]	.432 [10.97] .412 [10.46]	.509 [12.93] .479 [12.17]	.334 [8.48] .324 [8.23]	1.317 [33.45] 1.307 [33.20]	.999 [25.37] .989 [25.12]	1.556 [39.52] 1.526 [38.76]	MS18274-1	15	2	M24308/24-2F	1218124-2	1218124-2

THIS DRAWING IS A CONTROLLED DOCUMENT.

DIMENSIONS INCHES (mm)	TOLERANCES UNLESS OTHERWISE SPECIFIED	DATE	BY
0 PLC ±	0.0005	30DEC97	P. YEAGER
1 PLC ±	0.001	30DEC97	G. OVER
2 PLC ±	0.002		
3 PLC ±	0.005		
4 PLC ±	0.010		
ANGLES	±		
MATERIAL	FINISH	WEIGHT	
SEE CALLOUTS	SEE CALLOUTS		

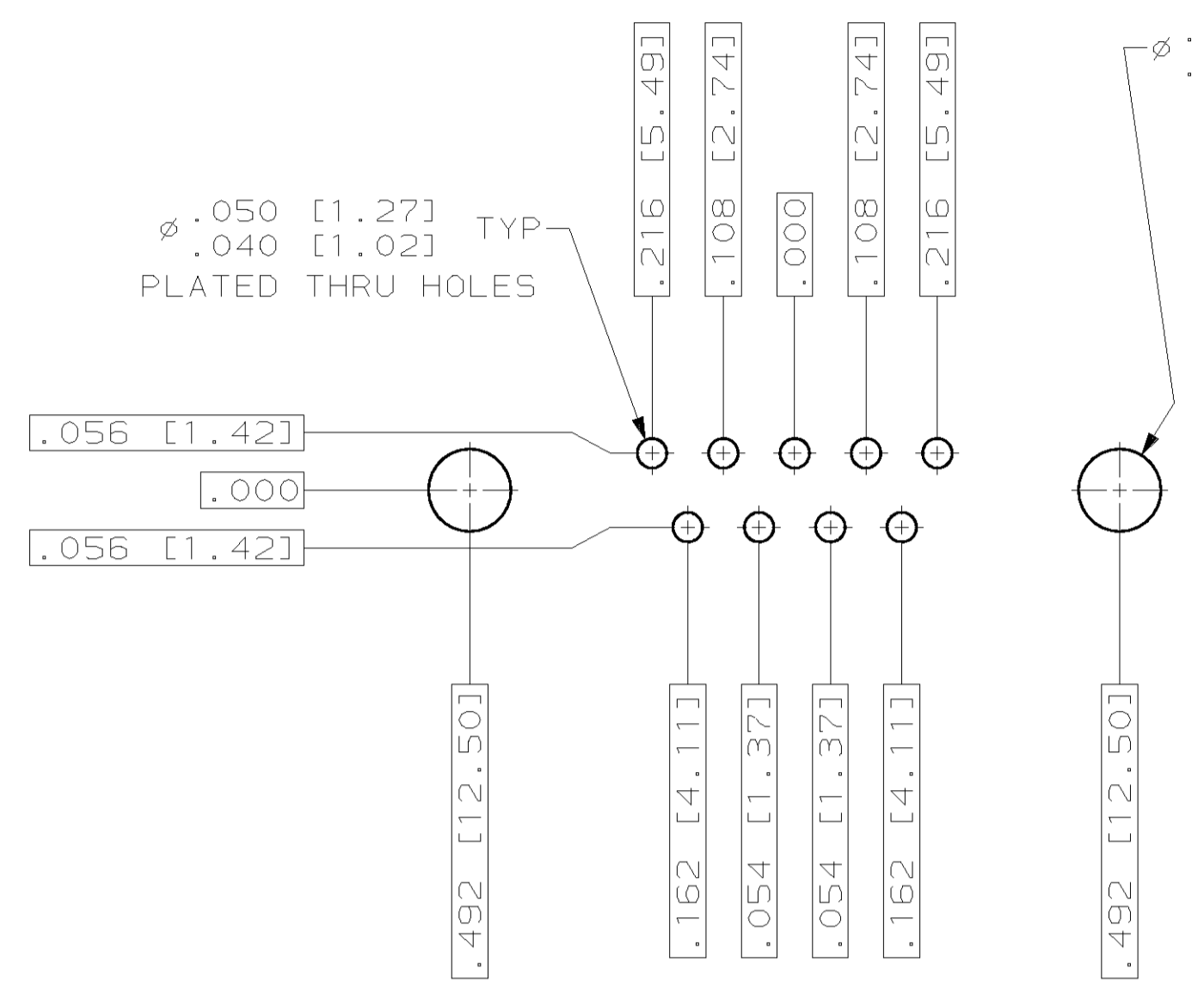
AMP Incorporated
 Harrisburg, PA 17105-3608

NAME: AMPLIMITE PLUG ASSY, LOW PROFILE
 SIZE 20 POSTED P.C. BOARD CONTACTS
 .030 DIA SHORT POST, SERIES 109
 SHELL SIZES 1 THRU 5

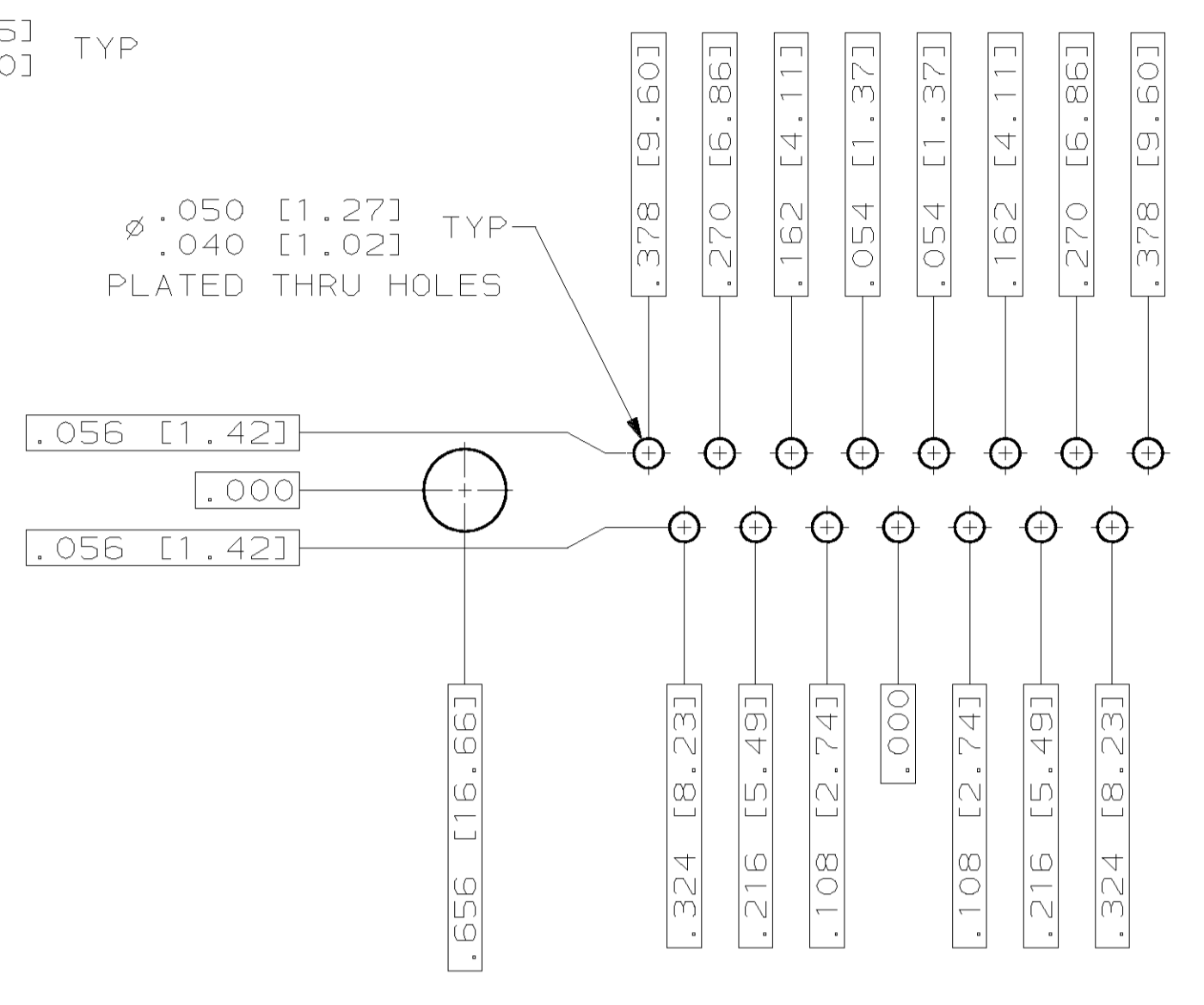
SIZE: A1 00779
 CAGE CODE: 1218124
 DRAWING NO: 1218124

SCALE: 4:1 SHEET: 1 OF 2 REV: D

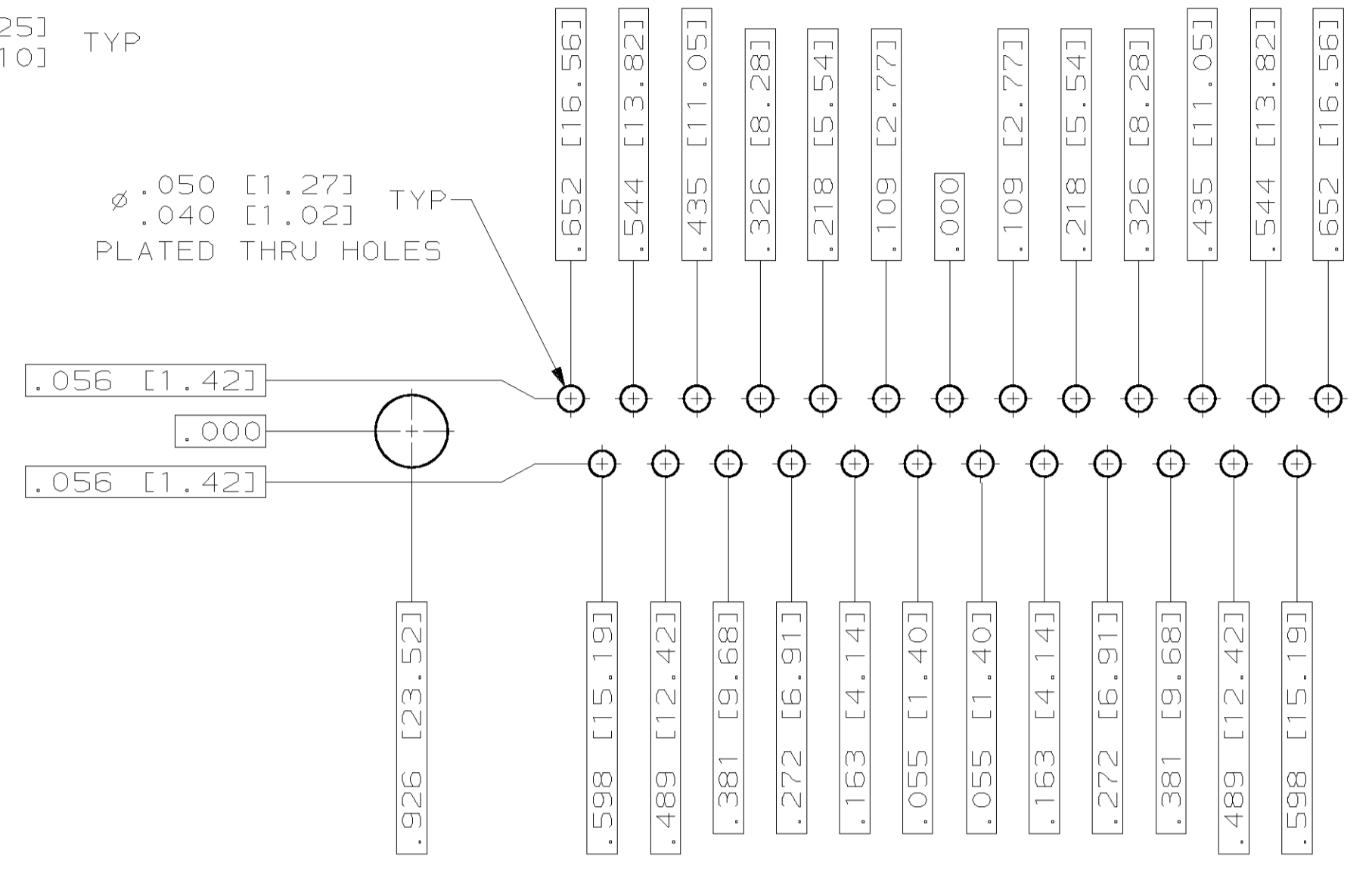
LOC	DIST	REV	DESCRIPTION	DATE	ENR	APVD
DF	DO		SEE SHEET 1			



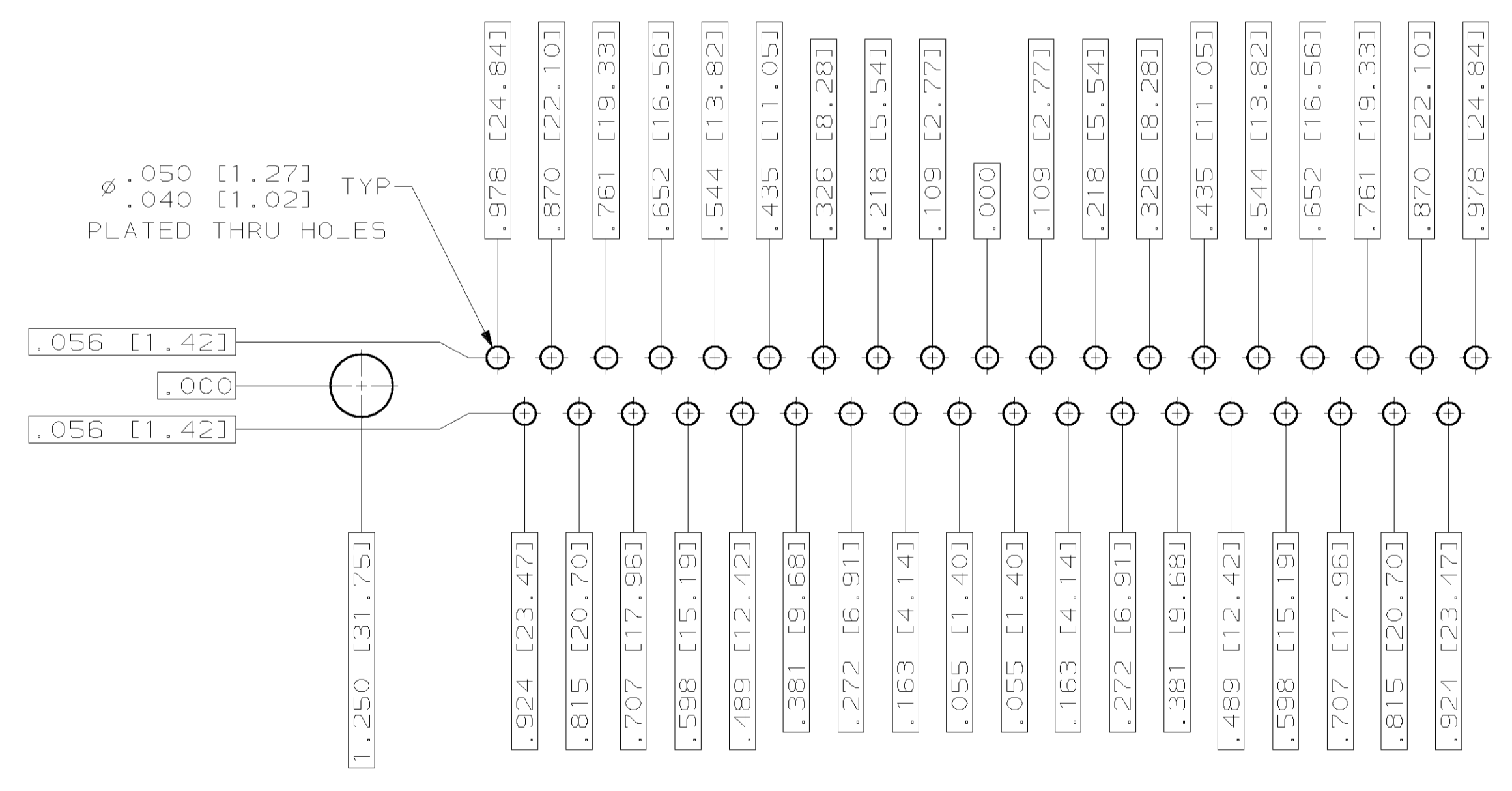
RECOMMENDED P.C. BOARD LAYOUT
SHELL SIZE 1 (9 POSITION) Δ



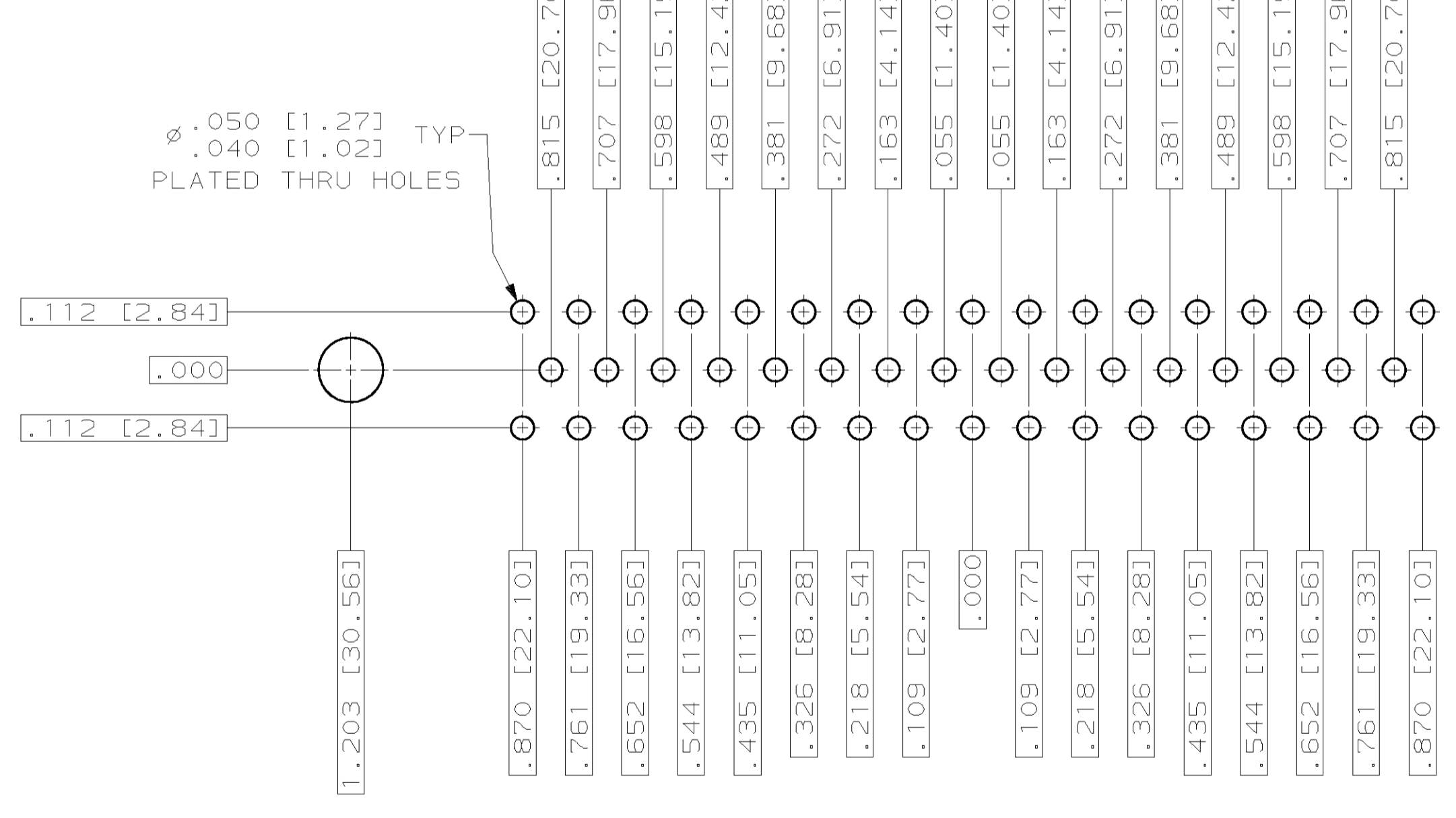
RECOMMENDED P.C. BOARD LAYOUT
SHELL SIZE 2 (15 POSITION) Δ



RECOMMENDED P.C. BOARD LAYOUT
SHELL SIZE 3 (25 POSITION) Δ



RECOMMENDED P.C. BOARD LAYOUT
SHELL SIZE 4 (37 POSITION) Δ



RECOMMENDED P.C. BOARD LAYOUT
SHELL SIZE 5 (50 POSITION) Δ

THIS DRAWING IS A CONTROLLED DOCUMENT.		DWN P. YEAGER 30DEC97	AMP Incorporated Harrisburg, PA 17105-3608																																																																																																																																																								
DIMENSIONS: INCHES (mm)		CHK G. OVER 30DEC97																																																																																																																																																									
TOLERANCES UNLESS OTHERWISE SPECIFIED:		APVD G. OVER 30DEC97	NAME AMPLIMITE PLUG ASSY, LOW PROFILE SIZE 20 POSTED P.C. BOARD CONTACTS, .030 DIA SHORT POST, SERIES 109, SHELL SIZES 1 THRU 5																																																																																																																																																								
<table border="1"> <tr><td>0</td><td>PLC</td><td>±</td></tr> <tr><td>1</td><td>PLC</td><td>±</td></tr> <tr><td>2</td><td>PLC</td><td>±</td></tr> <tr><td>3</td><td>PLC</td><td>±</td></tr> <tr><td>4</td><td>PLC</td><td>±</td></tr> <tr><td>5</td><td>PLC</td><td>±</td></tr> <tr><td>6</td><td>PLC</td><td>±</td></tr> <tr><td>7</td><td>PLC</td><td>±</td></tr> <tr><td>8</td><td>PLC</td><td>±</td></tr> <tr><td>9</td><td>PLC</td><td>±</td></tr> <tr><td>10</td><td>PLC</td><td>±</td></tr> <tr><td>11</td><td>PLC</td><td>±</td></tr> <tr><td>12</td><td>PLC</td><td>±</td></tr> <tr><td>13</td><td>PLC</td><td>±</td></tr> <tr><td>14</td><td>PLC</td><td>±</td></tr> <tr><td>15</td><td>PLC</td><td>±</td></tr> <tr><td>16</td><td>PLC</td><td>±</td></tr> <tr><td>17</td><td>PLC</td><td>±</td></tr> <tr><td>18</td><td>PLC</td><td>±</td></tr> <tr><td>19</td><td>PLC</td><td>±</td></tr> <tr><td>20</td><td>PLC</td><td>±</td></tr> <tr><td>21</td><td>PLC</td><td>±</td></tr> <tr><td>22</td><td>PLC</td><td>±</td></tr> <tr><td>23</td><td>PLC</td><td>±</td></tr> <tr><td>24</td><td>PLC</td><td>±</td></tr> <tr><td>25</td><td>PLC</td><td>±</td></tr> <tr><td>26</td><td>PLC</td><td>±</td></tr> <tr><td>27</td><td>PLC</td><td>±</td></tr> <tr><td>28</td><td>PLC</td><td>±</td></tr> <tr><td>29</td><td>PLC</td><td>±</td></tr> <tr><td>30</td><td>PLC</td><td>±</td></tr> <tr><td>31</td><td>PLC</td><td>±</td></tr> <tr><td>32</td><td>PLC</td><td>±</td></tr> <tr><td>33</td><td>PLC</td><td>±</td></tr> <tr><td>34</td><td>PLC</td><td>±</td></tr> <tr><td>35</td><td>PLC</td><td>±</td></tr> <tr><td>36</td><td>PLC</td><td>±</td></tr> <tr><td>37</td><td>PLC</td><td>±</td></tr> <tr><td>38</td><td>PLC</td><td>±</td></tr> <tr><td>39</td><td>PLC</td><td>±</td></tr> <tr><td>40</td><td>PLC</td><td>±</td></tr> <tr><td>41</td><td>PLC</td><td>±</td></tr> <tr><td>42</td><td>PLC</td><td>±</td></tr> <tr><td>43</td><td>PLC</td><td>±</td></tr> <tr><td>44</td><td>PLC</td><td>±</td></tr> <tr><td>45</td><td>PLC</td><td>±</td></tr> <tr><td>46</td><td>PLC</td><td>±</td></tr> <tr><td>47</td><td>PLC</td><td>±</td></tr> <tr><td>48</td><td>PLC</td><td>±</td></tr> <tr><td>49</td><td>PLC</td><td>±</td></tr> <tr><td>50</td><td>PLC</td><td>±</td></tr> </table>		0		PLC	±	1	PLC	±	2	PLC	±	3	PLC	±	4	PLC	±	5	PLC	±	6	PLC	±	7	PLC	±	8	PLC	±	9	PLC	±	10	PLC	±	11	PLC	±	12	PLC	±	13	PLC	±	14	PLC	±	15	PLC	±	16	PLC	±	17	PLC	±	18	PLC	±	19	PLC	±	20	PLC	±	21	PLC	±	22	PLC	±	23	PLC	±	24	PLC	±	25	PLC	±	26	PLC	±	27	PLC	±	28	PLC	±	29	PLC	±	30	PLC	±	31	PLC	±	32	PLC	±	33	PLC	±	34	PLC	±	35	PLC	±	36	PLC	±	37	PLC	±	38	PLC	±	39	PLC	±	40	PLC	±	41	PLC	±	42	PLC	±	43	PLC	±	44	PLC	±	45	PLC	±	46	PLC	±	47	PLC	±	48	PLC	±	49	PLC	±	50	PLC	±
0	PLC	±																																																																																																																																																									
1	PLC	±																																																																																																																																																									
2	PLC	±																																																																																																																																																									
3	PLC	±																																																																																																																																																									
4	PLC	±																																																																																																																																																									
5	PLC	±																																																																																																																																																									
6	PLC	±																																																																																																																																																									
7	PLC	±																																																																																																																																																									
8	PLC	±																																																																																																																																																									
9	PLC	±																																																																																																																																																									
10	PLC	±																																																																																																																																																									
11	PLC	±																																																																																																																																																									
12	PLC	±																																																																																																																																																									
13	PLC	±																																																																																																																																																									
14	PLC	±																																																																																																																																																									
15	PLC	±																																																																																																																																																									
16	PLC	±																																																																																																																																																									
17	PLC	±																																																																																																																																																									
18	PLC	±																																																																																																																																																									
19	PLC	±																																																																																																																																																									
20	PLC	±																																																																																																																																																									
21	PLC	±																																																																																																																																																									
22	PLC	±																																																																																																																																																									
23	PLC	±																																																																																																																																																									
24	PLC	±																																																																																																																																																									
25	PLC	±																																																																																																																																																									
26	PLC	±																																																																																																																																																									
27	PLC	±																																																																																																																																																									
28	PLC	±																																																																																																																																																									
29	PLC	±																																																																																																																																																									
30	PLC	±																																																																																																																																																									
31	PLC	±																																																																																																																																																									
32	PLC	±																																																																																																																																																									
33	PLC	±																																																																																																																																																									
34	PLC	±																																																																																																																																																									
35	PLC	±																																																																																																																																																									
36	PLC	±																																																																																																																																																									
37	PLC	±																																																																																																																																																									
38	PLC	±																																																																																																																																																									
39	PLC	±																																																																																																																																																									
40	PLC	±																																																																																																																																																									
41	PLC	±																																																																																																																																																									
42	PLC	±																																																																																																																																																									
43	PLC	±																																																																																																																																																									
44	PLC	±																																																																																																																																																									
45	PLC	±																																																																																																																																																									
46	PLC	±																																																																																																																																																									
47	PLC	±																																																																																																																																																									
48	PLC	±																																																																																																																																																									
49	PLC	±																																																																																																																																																									
50	PLC	±																																																																																																																																																									
MATERIAL		APPLICATION SPEC	SIZE																																																																																																																																																								
FINISH		WEIGHT	CAGE CODE																																																																																																																																																								
		CUSTOMER DRAWING	DRAWING NO																																																																																																																																																								
		SCALE	RESTRICTED TO																																																																																																																																																								