

# *RemoTI Development Kit*

## *Hardware User's Guide*



swru211

## Table of Contents

<b>1</b>	<b>INTRODUCTION .....</b>	<b>4</b>
<b>2</b>	<b>ABOUT THIS MANUAL .....</b>	<b>4</b>
<b>3</b>	<b>ACRONYMS AND ABBREVIATIONS.....</b>	<b>5</b>
<b>4</b>	<b>GETTING STARTED.....</b>	<b>6</b>
4.1	DEVELOPMENT KIT CONTENT .....	6
4.2	THE REMOTI REMOTE CONTROL .....	7
4.3	THE REMOTI TARGET MODULE .....	8
4.4	INSTALLING REMOTI SOFTWARE AND WINDOWS DRIVERS .....	9
4.5	REMOTI SOFTWARE .....	9
4.6	INSTALLING THE TARGET MODULE WINDOWS DRIVERS.....	10
4.7	TESTING THE REMOTE CONTROL APPLICATION.....	14
<b>5</b>	<b>PROGRAMMING AND DEBUGGING .....</b>	<b>15</b>
5.1	USING THE SMARTRF FLASH PROGRAMMER PC SOFTWARE .....	15
5.2	PROGRAMMING AND DEBUGGING THE REMOTE CONTROL .....	15
5.3	PROGRAMMING AND DEBUGGING THE TARGET MODULE .....	16
<b>6</b>	<b>THE TARGET MODULE.....</b>	<b>17</b>
6.1	TARGET MODULE HARDWARE DESCRIPTION .....	17
6.1.1	<i>CC2530EM interface.....</i>	<i>17</i>
6.1.2	<i>USB.....</i>	<i>18</i>
6.1.3	<i>Power supply.....</i>	<i>19</i>
6.1.4	<i>Interface connectors.....</i>	<i>19</i>
6.1.5	<i>Debug interface .....</i>	<i>20</i>
6.1.6	<i>Dataflash .....</i>	<i>20</i>
6.1.7	<i>IR Interface.....</i>	<i>20</i>
6.1.8	<i>Buttons and LEDs.....</i>	<i>21</i>
<b>7</b>	<b>APPENDIX A: OPENING THE REMOTE CONTROL.....</b>	<b>22</b>
<b>8</b>	<b>APPENDIX B: HOW TO UPGRADE THE TARGET MODULE USB DRIVER.....</b>	<b>23</b>
<b>9</b>	<b>SCHEMATIC AND LAYOUT.....</b>	<b>25</b>
<b>10</b>	<b>DOCUMENT HISTORY .....</b>	<b>25</b>

## Table of Figures

Figure 1: Remote Control Key layout .....	8
Figure 2: Target module layout.....	9
Figure 3: Assembled target module.....	10
Figure 4: Connecting the target module for the first time (Windows XP) .....	11
Figure 5: Select automatic installation of software (Windows XP) .....	11
Figure 6: The driver installation is completed (Windows XP).....	12
Figure 7: Correct target module setup (Windows XP).....	13
Figure 8: SmartRF flash programmer interface.....	15
Figure 9: Connecting the remote control to the CCdebugger .....	16
Figure 10: Connecting the target module to the CCdebugger .....	17
Figure 11: USB interface selection with 0-ohm resistor .....	19
Figure 12: Serial flash interface details .....	20
Figure 13: Opening the remote control, step one.....	22
Figure 14: Opening the remote control, step two .....	22
Figure 15: Short pin 1(GND) and pin11 (SDA).....	23
Figure 16: Installing the EEPROM burner driver .....	23
Figure 17: Using the EEPROM burner software .....	24

## Table of Tables

Table 1: EM module interface.....	18
Table 2 – Interface header pinout.....	20
Table 3 –Debug Header pinout .....	20

## 1 Introduction

The RemoTI development kit allows you to evaluate RF4CE remote controls and develop applications based on the RF4CE standard. The main components of the development kit are a complete RF remote control and a target module that can be connected to A/V equipments or TV's.

The development kit also includes the RemoTI software, this software package includes software and tools required to develop your own remote controls. The CC debugger is used for programming and debugging all Chipcon products from Texas Instruments.

## 2 About this manual

This manual covers the hardware of the RemoTI development kit. To use the development kit the RemoTI-CC2530DK software must be downloaded from <http://www.ti.com/remoTI>. Separate manuals cover the RemoTI target emulator PC software and the software development suite.

The complete schematics and layout files for the remote control and the target module is available from <http://www.ti.com/remoTI>. The CC2530EM module reference design files is available at [www.ti.com/cc2530emk](http://www.ti.com/cc2530emk)


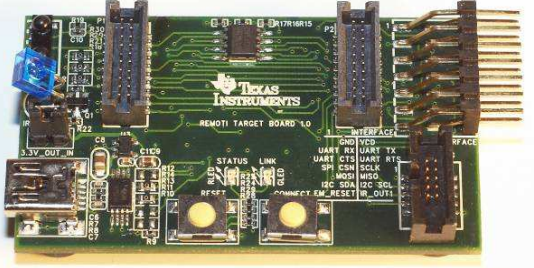
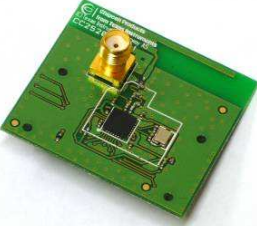

### 3 Acronyms and Abbreviations

DK	Development Kit
EM	Evaluation Module
I2C	Inter-Integrated Circuit (communication bus)
IC	Integrated Circuit
IR	Infra Red
kB	Kilo Byte (1024 byte)
LED	Light Emitting Diode
LPW	Low Power Wireless
MCU	Micro Controller
RF	Radio Frequency
RF4CE	Radio Frequency for Consumer Electronic
SoC	System on Chip
SPI	Serial Peripheral Interface
TI	Texas Instruments
TX	Transmit
UART	Universal Asynchronous Receive Transmit
USB	Universal Serial Bus

## 4 Getting started

### 4.1 Development Kit Content

The development kit includes the following main components:

<p><b>RF remote control</b></p> <p>A complete cost optimized RF4CE remote control reference design with integrated PCB antenna. The remote control can be programmed using the debug interface.</p>	
<p><b>Target Module</b></p> <p>Interface board for connecting I/O signals to typical remote applications. The following interfaces are accessible:</p> <ul style="list-style-type: none"> <li>- UART over USB virtual serial port</li> <li>- UART, CMOS signal level</li> <li>- SPI</li> <li>- I<sup>2</sup>C</li> <li>- IR receiver/transmitter</li> </ul>	
<p><b>CC2530EM</b></p> <p>This is the CC2530 Evaluation Module (EM) with the RF IC reference design. Use the EM as reference design for antenna and RF layout. To be plugged into the Receiver module</p>	
<p><b>CC debugger</b></p> <p>USB Debug Interface for programming and debugging applications running on the remote control and target board.</p> <p>For programming the CC debugger is used with the SmartRF flash programmer SW</p> <p>For In-Circuit Emulator the CC debugger is used with the IAR embedded workbench</p>	

- 2 AA batteries
- 2 Mini USB cable, one for the remote control target module and one for the CCdebugger
- 1 10-pin flat cable with 2x5 2.54mm connector
- 1 10-pin flat cable with 2x5 1.27mm connector
- 1 Converter board 2.54mm-1.27mm connector

The RemoTI development kit includes the following software:

Application	Description	Download link and reference
<b>RemoTI stack library and sample applications</b>	The embedded software included with the remote control and target board. Allows the development kit to be used out-of-the-box as an RF remote control.	SWRC131
<b>RemoTI emulator PC tool</b>	A PC tool that can be connected to the USB interface of the target module to test	Included in the RemoTI SW package
<b>Packet sniffer</b>	A PC tools that can be used to display all RF4CE packets on the network. Requires a packet sniffer hardware adapter to be used with RF4CE.	<a href="http://focus.ti.com/docs/toolsw/folders/print/packet-sniffer.html">http://focus.ti.com/docs/toolsw/folders/print/packet-sniffer.html</a> <a href="http://www.ti.com/litv/zip/swrc045j">http://www.ti.com/litv/zip/swrc045j</a> TI reference <b>SWRC045</b>
<b>SmartRF Flash programmer</b>		<a href="http://www.ti.com/litv/zip/swrc044f">http://www.ti.com/litv/zip/swrc044f</a> TI reference <b>SWRC044</b>
<b>IAR EW8051 C-compiler</b>		<a href="http://www.iar.com/ew8051">www.iar.com/ew8051</a>

Additional CCdebugger and packet sniffer hardware adapters can be purchased from the TI eStore on [www.ti.com](http://www.ti.com)

## 4.2 The RemoTI Remote Control

The remote control is powered by 2xAA batteries included with the development kit.

Figure 1 shows the key layout of the remote control with some of the important keys.

- Pairing key, pair the remote control with the target
- Packet error rate key, used to start the packet error rate mode. Use this mode to test range and RF quality. See the RemoTI Sample Application Users Guide (SWRU201) for instructions to run the PER and latency test, and the RemoTI Latency and Packet Error Rate Application Note (SWRA262) for sample measurements.
- On/Off, switches power on the target. Note that most applications can still receive remote control commands when powered off, but the latency is longer



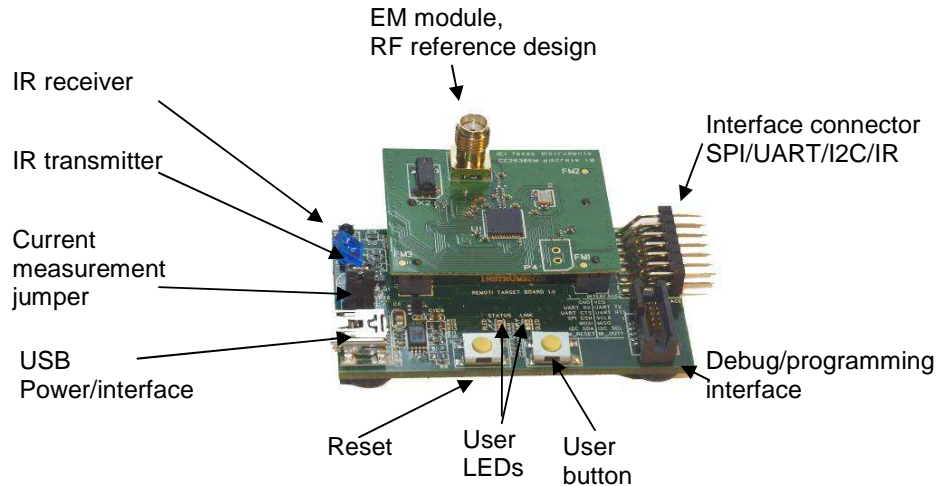
Figure 1: Remote Control Key layout

### 4.3 The RemoTI Target Module

The target module includes the following features and interfaces:

- Virtual serial port USB interface to allow using a COM port on a PC
- I2C/SPI/UART interface for connection to A/V equipment
- Flash memory for storage of Over the air (OAD) images and IR codes
- 1 channel IR drivers and LED for IR repeater function
- IR sensor input
  - o Learning IR code functionality
  - o Direct translation of IR codes to RF commands
- Buttons for reset and pairing
- Status LEDs

The target module is powered from the USB interface connected to a PC or a power adapter with USB interface.



**Figure 2: Target module layout**

Figure 2 shows the key layout of the target module with some of the peripheral interfaces highlighted. For details of the target module features, please see chapter 6.

#### **4.4 Installing RemoTI software and Windows drivers**

Before connecting the RemoTI target Module to a PC the required drivers for the tool must be installed. The latest version of the driver is included with the RemoTI-CC2530DK software package. It can be downloaded from <http://www.ti.com/remoTI>.

After the software is installed, the driver files are located at this default location:  
C:\Texas Instruments\RemoTI\Tools\Driver

For instructions how to install the CC debugger, please follow the quick start guide included with the CC debugger.

The RemoTI-CC2530DK software includes drivers for the target module. It is highly recommended to install this software before you connect the target module to the PC.

#### **4.5 RemoTI Software**

Included with the RemoTI software package is the Target Emulator application. This application is located at the C:\Texas Instruments\RemoTI\bin folder. The target module is programmed to be a RF4CE network processor that receives commands from the Target emulator software and handles the RF4CE protocol

The Target Emulator lets you emulate a remote control on the PC. It displays all messages sent between the target module and the PC and works in many ways as a system that would interface to a real life remote control receiver.

The RemoTI software includes RF4CE example software for remote controls and for target interface. The software is designed to easily allow customized versions of remote controls and to support a variety of interfaces on the target side.

The latest version of RemoTI software can be downloaded from the Texas Instruments website (<http://www.ti.com/remoti>), where you will also find a complete user manual.

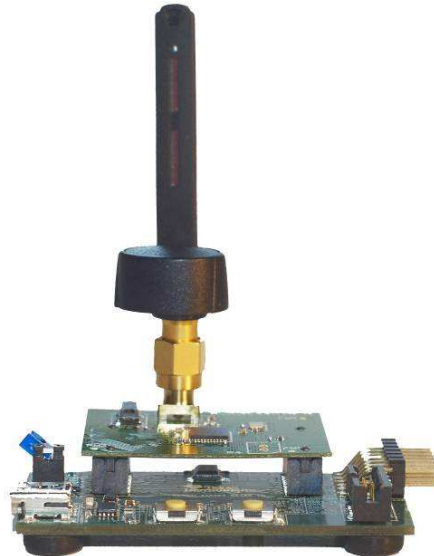
#### **4.6 Installing the target module Windows drivers**

Before your PC can communicate with the target modules over USB, you will need to install the driver files for the target module. Drivers for Windows are included with the installer

A brief set of installation instructions for Microsoft Windows XP will be given here, but Windows 2000, Windows NT and Windows 98 are also supported.

After you have downloaded RemoTI software from the web, run the installer file and follow the instructions.

Before connecting the target module to the USB port of the PC, plug the CC2530EM module onto the target module and connect the antenna on the CC2530EM module. Figure 3 shows a complete assembled target module.



**Figure 3: Assembled target module**

You can now connect your target module to the computer with a mini-USB cable. A “Found New Hardware” dialog box will prompt you to locate the missing driver.



Figure 4: Connecting the target module for the first time (Windows XP)

Select "No, not this time" and continue with "Next".

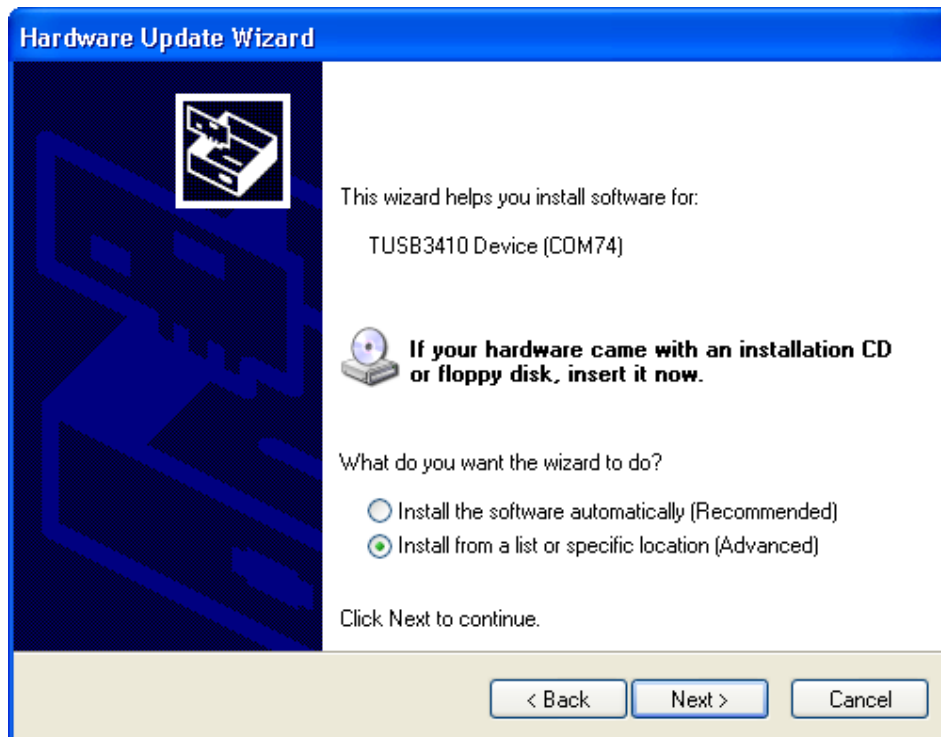
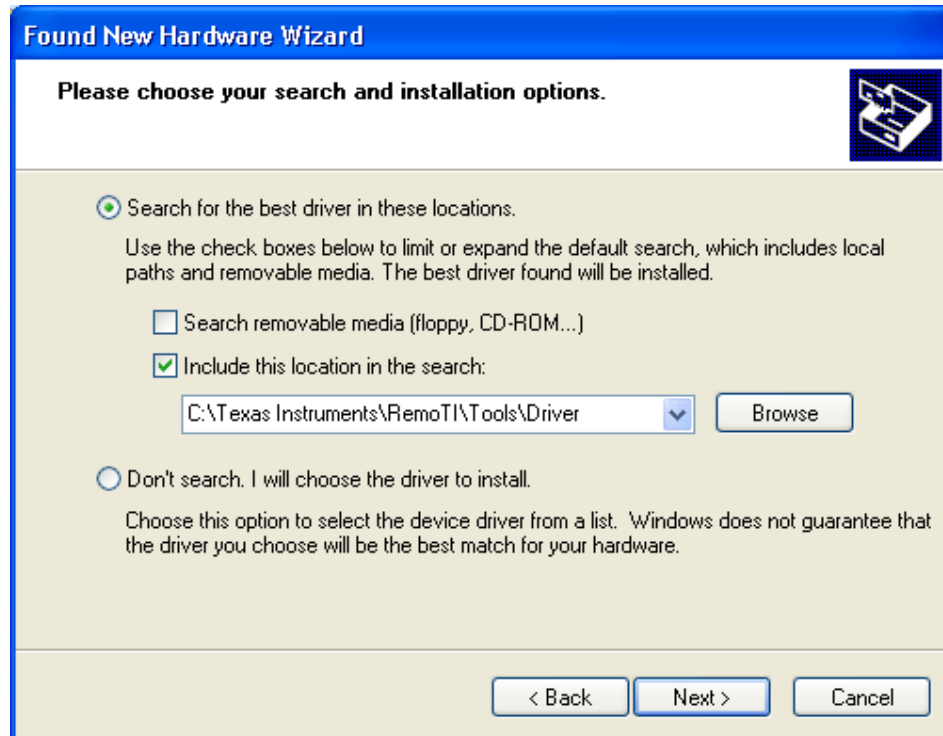


Figure 5: Select automatic installation of software (Windows XP)

Select "Install from a list or specific location (Advanced)" to install the driver.



**Figure 6: The driver installation is completed (Windows XP)**

Select the following directory [<Installation Path>](#)\Tools\Driver for the needed \*.inf and \*.sys driver files.

The driver is now installed and the PC is can communicate with target module using a virtual COM port. Unfortunately Windows does not confirm what COM port the device is assigned to.

To see the COM port number, open the Windows Control panel – System – Hardware – Device Manager and check the COM port number under Ports (COM and LPT).

The driver is properly installed if the target module is listed under the “Ports (COM & LPT)” contains “TUSB3410 Device (COM xx)” and that it is not labelled with an exclamation mark. If there is an exclamation mark, right click with the mouse on the line and choose “update driver” and follow the instructions above.

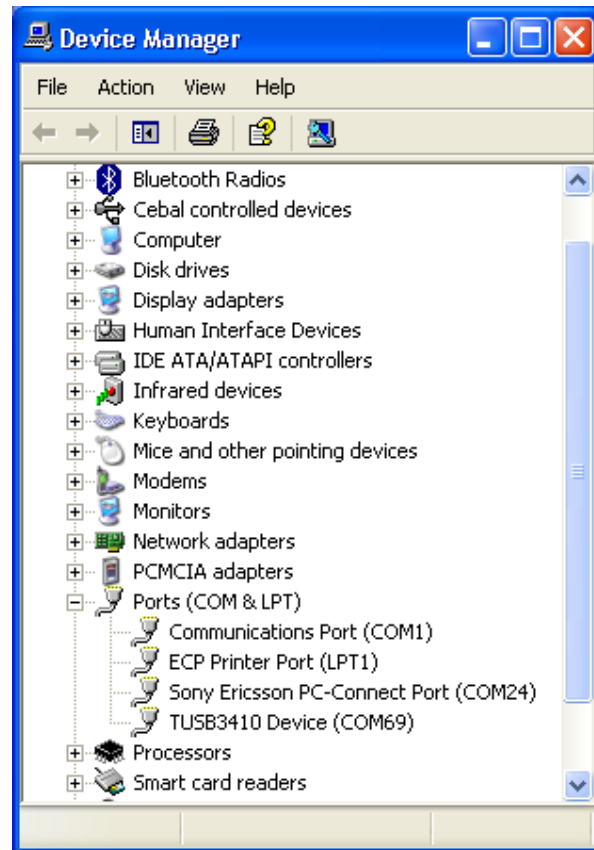


Figure 7: Correct target module setup (Windows XP)

#### **4.7 Testing the Remote Control application**

You are now ready to use the development kit to test remote control. The RemoTI software package includes a remote control target emulator. This is an application that is running on a PC and emulates TV or A/V equipment. It controls the RemoTI receiver using a serial port interface. For real applications the target emulator SW will be running on the host processor of the equipment.

The target emulator can be found in the <Installation Path>\RemoTI\bin folder. For instructions how to set up and use the target emulator please see the RemoTI Target Emulator Users Guide (SWRU202) in the <Installation Path>\Documents\User Guide folder.

## 5 Programming and debugging

### 5.1 Using the SmartRF Flash Programmer PC software

The SmartRF programmer PC software is used for programming the software on the remote control and the target module. The RemoTI installation package includes two hex files in the <Installation Path>\RemoTI\bin folder:

**Remote control:**      rsa\_CC2530.hex      Remote Sample Application  
**Target module:**      rnp\_cc2530.hex      Remote Network Processor

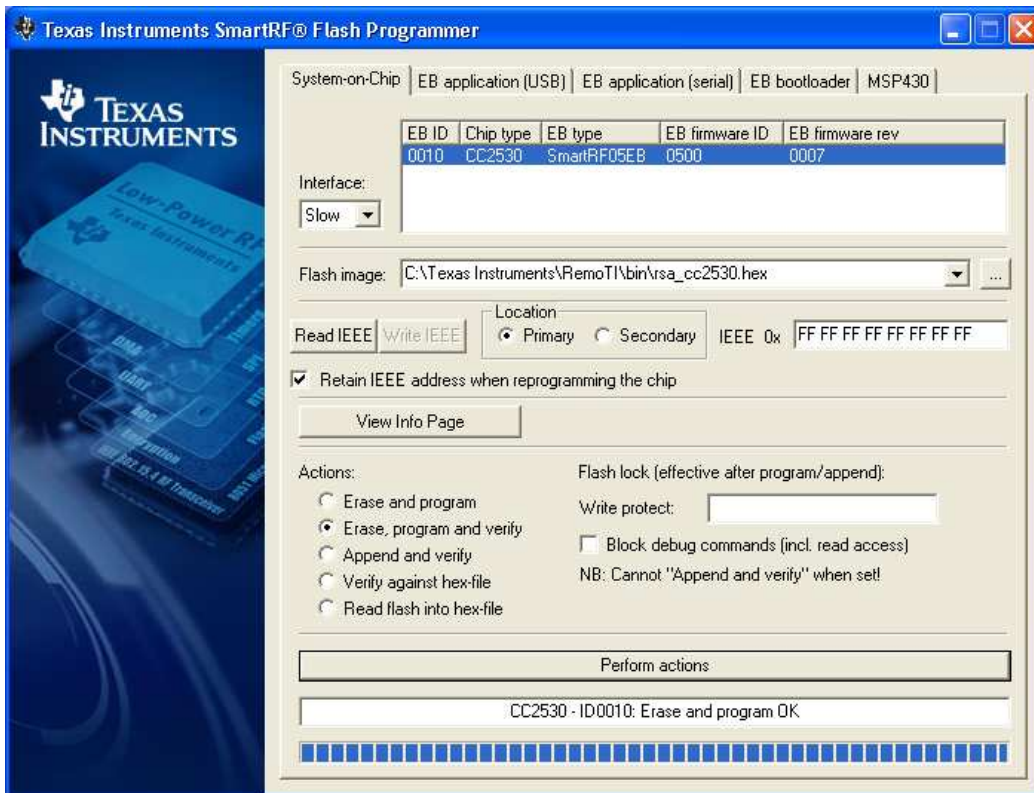
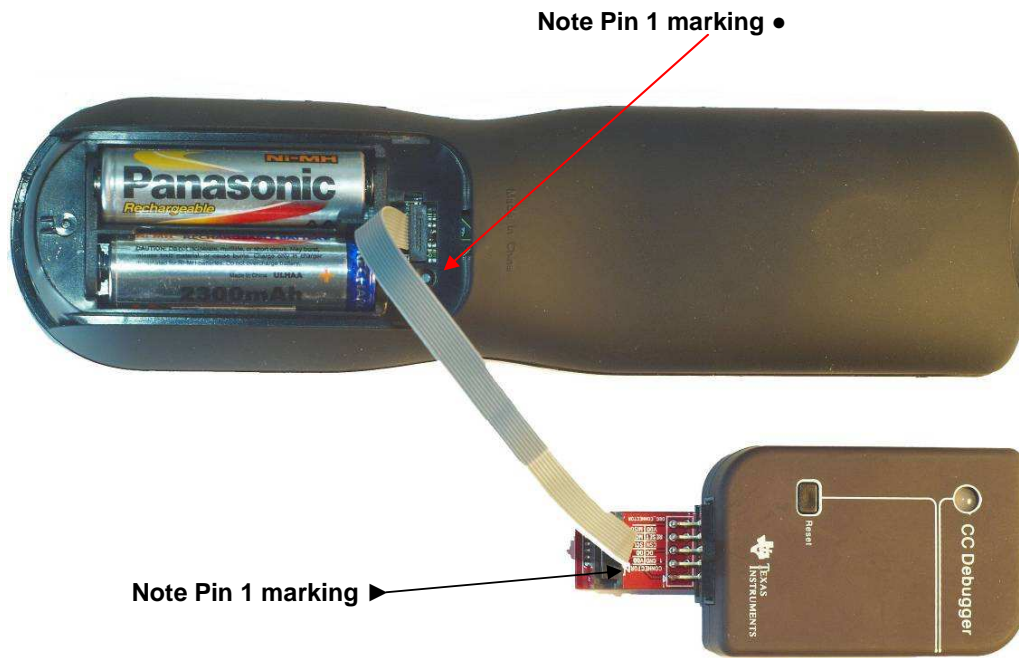


Figure 8: SmartRF flash programmer interface

### 5.2 Programming and debugging the remote control

The CC2530 can be programmed and used as an in-circuit emulator using the debugging interface on the rear under the battery compartment cover. The CCdebugger is used to program and debug remote control applications.



**Figure 9: Connecting the remote control to the CCdebugger**

Care should be taken when connecting the debugger cable to the remote control. There is no protection from connecting the cable with wrong orientation. The pin 1 marking on the CCdebugger adapter board must match the pin 1 marking on the remote control.

On the CCdebugger adapter board pin 1 is marked with a **triangle** and **1** close to the connector. On the remote control pin 1 is marked with a **circle** in the remote control plastic and **1** on the PCB close to the connector.

The batteries must be inserted in the remote control to provide power to the target module before programming.

Press the Reset button on the debugger after the USB is connected, the LED on the debugger should now turn green

### 5.3 Programming and debugging the target module

The CCdebugger can be used to program and debug applications on the target module. See Figure 10 for instruction how to connect the debugger. The connectors on both the CCdebugger and the target module are fitted with a sleeve to make sure the cable can only be fitted with correct orientation.

The USB cable must be connected to provide power to the target module before programming.

Press the Reset button on the debugger after the cables are connected, the LED on the debugger should now turn green

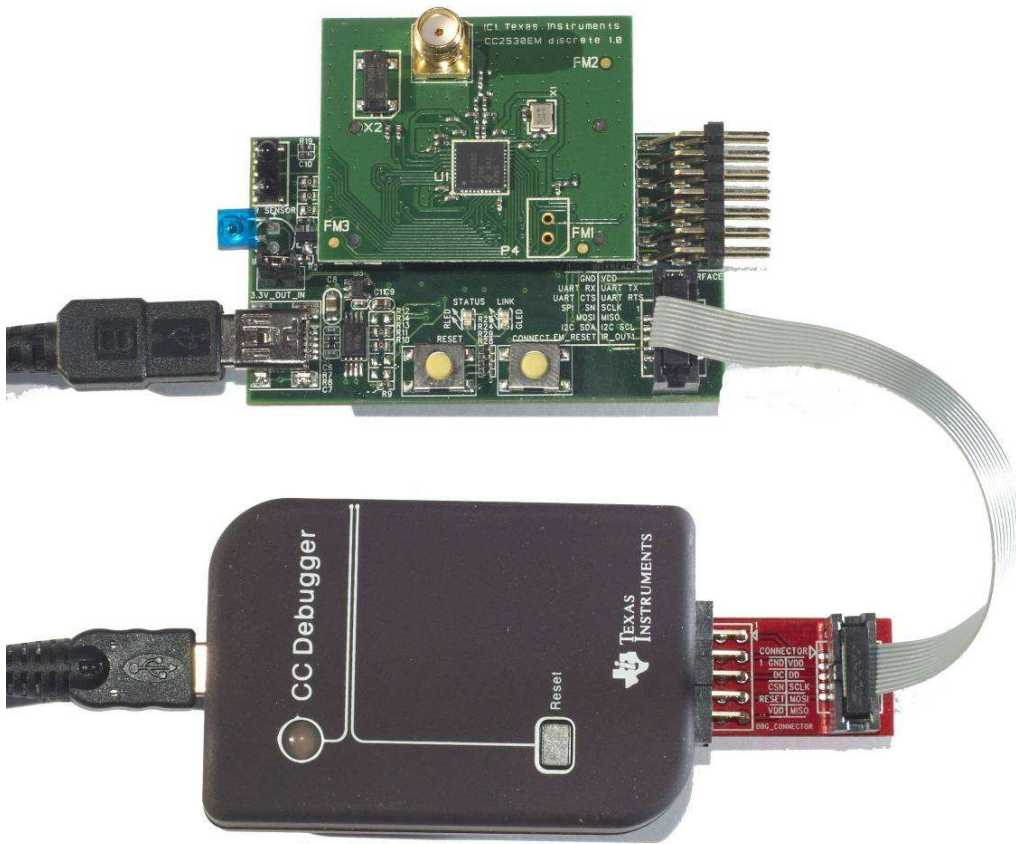


Figure 10: Connecting the target module to the CCdebugger

## 6 The Target Module

The target module is designed to allow flexible interfaces for many common types of interfaces used in typical remote control applications. The target module uses a CC2530EM RF reference design

### 6.1 Target module hardware description

#### 6.1.1 CC2530EM interface

The signal names for the CC2530EM interface is detailed in Table 1:

EM header	RemoTI target module signal	EM header	RemoTI target module signal
P1_01	GND	P2_01	
P1_03	UART_CTS	P2_03	
P1_05	I2C_SCL	P2_05	
P1_07	UART_RX	P2_07	VCC_EM
P1_09	UART_TX	P2_09	VCC_EM
P1_11	I2C_SDA	P2_11	

P1_13	IR_OUT1	P2_13	
P1_15		P2_15	EM_RESET
P1_17	LED0	P2_17	BUTTON
P1_19	GND	P2_19	LED1
P1_02		P2_02	GND
P1_04	FLASH_CS	P2_04	
P1_06	IR_IN	P2_06	
P1_08		P2_08	
P1_10	DD	P2_10	
P1_12	DC	P2_12	USBM
P1_14	CSN	P2_14	USBP
P1_16	SCLK	P2_16	
P1_18	MOSI	P2_18	UART_RTS
P1_20	MISO	P2_20	

**Table 1: EM module interface**

Connector P1 and P2 are SMD, 2x10 pin row headers with 0.05in spacing. The part number is TFM-110-02-SM-D-A-K-TR and it is produced by Samtec, [www.samtec.com](http://www.samtec.com). The distance between P1 and P2 is 1200 mils (centre to centre).

#### **6.1.2 USB**

The USB port is used for powering the board and for serial interface to the CC2530. A TUSB3410 is used to translate the serial port interface to USB interface.

Future versions of the target module may use devices with integrated USB interfaces. In order to support devices with integrated USB interface 0-ohm resistors are used to select between interfacing USB directly to TUSB3410 and to the EM connector.

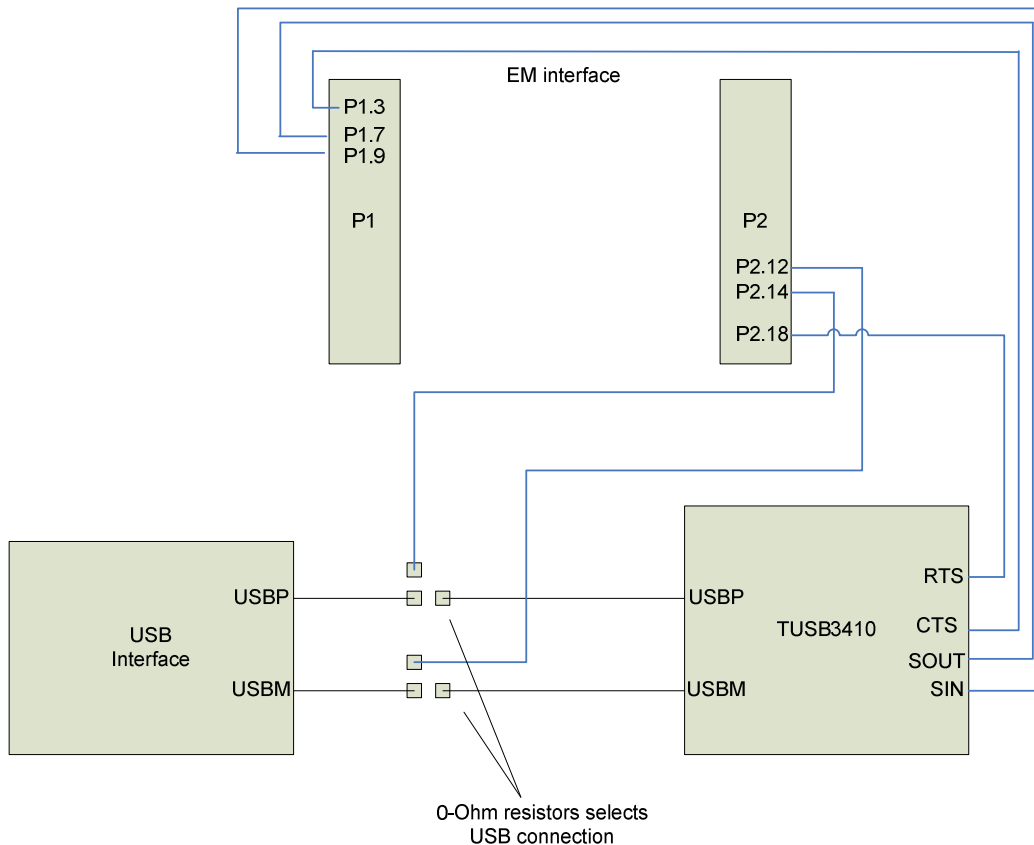


Figure 11: USB interface selection with 0-ohm resistor

### 6.1.3 Power supply

The board is powered from the USB connector, the voltage is 3.3V. The USB voltage is regulated using a TPS79333 voltage regulator. The power supply of the board supports current consumption up to 200mA. A jumper (J1) is mounted on the power supply line to allow easy measurement of current consumption. Note that when measuring current consumption, the TUSB3410 USB interface device may draw up to 15mA in active mode.

### 6.1.4 Interface connectors

A 2x7 pin header, 2.54 mm pitch on the edge of the board (J4) is used for connecting external equipment to the target module. The board has marking of the pin names as shown in Table 2.

The pinout of the connector is shown in Table 2. EM connector number in parentheses.

Signal name	Pin #	Pin #	Signal name
GND	1	2	VDD
UART RX(P1.7)	3	4	UART TX(P1.9)
UART CTS(P1.3)	5	6	UART RTS(P2.18)
SPI CSN(P1.14)	7	8	SCLK(P1.16)
MOSI(P1.18)	9	10	MISO(P1.20)
I2C SDA(P1.11)	11	12	I2C SCL(P1.5)
EM_RESET((P2.15)	13	14	IR_OUT1(P1.13)

**Table 2 – Interface header pinout**

**6.1.5 Debug interface**

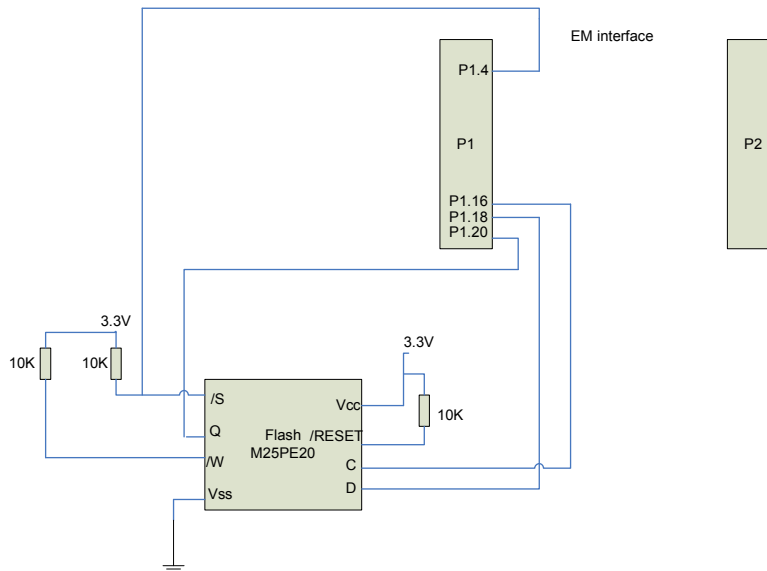
A 2x5 pin 1.27 mm pitch header (J5) is used for programming and debugging the CC2530 on the EM socket. The pinout of this connector is shown in Table 3 below. EM connector pin numbers in parentheses.

Signal name	Pin #	Pin #	Signal name
GND	1	2	VDD
DC(P1.12)	3	4	DD(P1.10)
CSN(P1.14)	5	6	SCLK(P1.16)
EM_RESET(P2.15)	7	8	MOSI(P1.18)
NC	9	10	MISO(P1.20)

**Table 3 –Debug Header pinout**

**6.1.6 Dataflash**

A 2 megabit serial dataflash on the board interfaces to the SPI. The dataflash used is a Numonyx M25PE20. The flash SPI interface is connected to the SPI interface on the EM connector. The flash chip select signal is controlled by the FLASH\_CS signal (P1.4) . The dataflash can be used for storing IR code libraries or Over the Air Download (OAD) images if the devices support downloading new program memory from the RF interface.



**Figure 12: Serial flash interface details**

**6.1.7 IR Interface**

The IR interface includes an IR receiver and 1 channel IR output. The IR receiver is connected to a timer input capture channel to measure IR signals. The IR output is connected to a timer output pin to generate IR waveforms.

The IR receiver is a Vishay TSOP85238. The receiver is optimized for 38 KHz input signal. The IR input is connected to the IR\_IN signal

The IR transmitter is a Vishay TSKS5400S. The diode is only used for short distance IR signals as the target module is intended to be mounted on the receiver side of the equipment. The IR diode is controlled by the IR\_OUT1 signals. The IR\_OUT1 signal is accessible on pin 12 of the interface header connector to allow driving external signals with the IR output.

### **6.1.8 Buttons and LEDs**

The target module includes a push button can be used to associate the target board and the remote control. In addition there is a reset button to reset the board.

The LEDs are controlled by the signals LED0 and LED1. The red LED is marked "STATUS" and the green LED is marked "LINK".

## 7 Appendix A: Opening the remote control

Yes, we know you will do it... Here are the instructions how to open the remote control without breaking it.

First insert two thin flat screwdrivers on the bottom of the remote between the two slots. Press carefully to pry open the casing on the bottom.



**Figure 13: Opening the remote control, step one**

When the bottom of the remote is opened, follow the edge around the sides of the remotes with a flat screwdriver and press carefully to take it apart



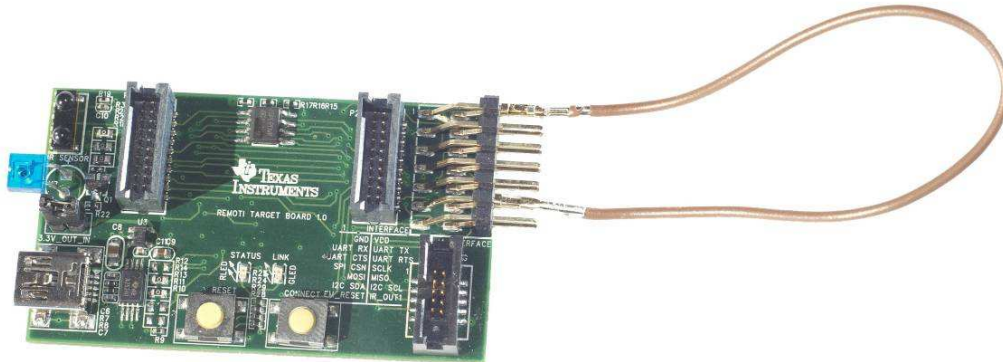
**Figure 14: Opening the remote control, step two**

## 8 Appendix B: How to upgrade the target module USB driver

The target module USB driver information is stored in an EEPROM for the TUSB3410 USB interface device. This EEPROM includes Vendor ID, USB ID, USB device name, and serial number. The EEPROM can be customized by programming the EEPROM via the USB interface.

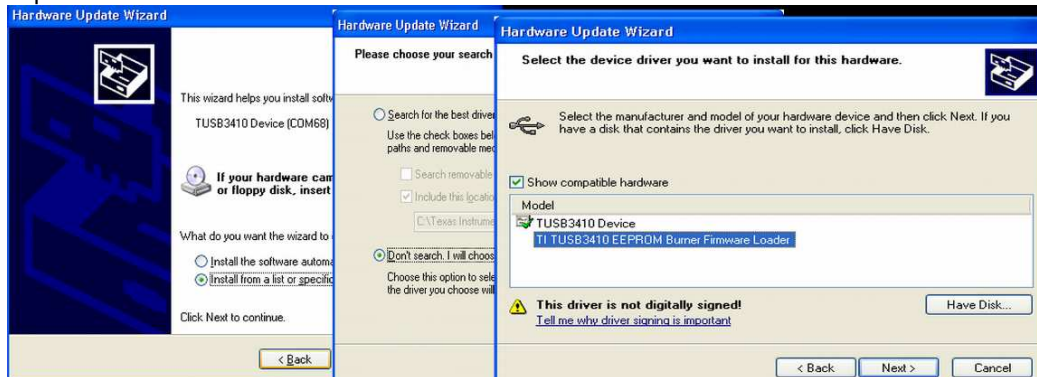
To modify the EEPROM content, download the EEPROM burner SW: <http://www.ti.com/litv/zip/slrc259a>. Install the program on the PC

Remove the CC2530EM from the target module and short the pins 1(GND) and pin 11(I2C SDA) on the interface header to short the EEPROM data signal to GND. Plug in the mini-USB connector.



**Figure 15: Short pin 1(GND) and pin11 (SDA)**

The device should now identify as a TUSB3410 device on the PC, and the new hardware wizard will be displayed. If the wizard is not displayed, go to “Control Panel -> System -> Device Manager -> Port (COM & LPT) right click on the TUSB3410 Device driver and select “Update Driver”.

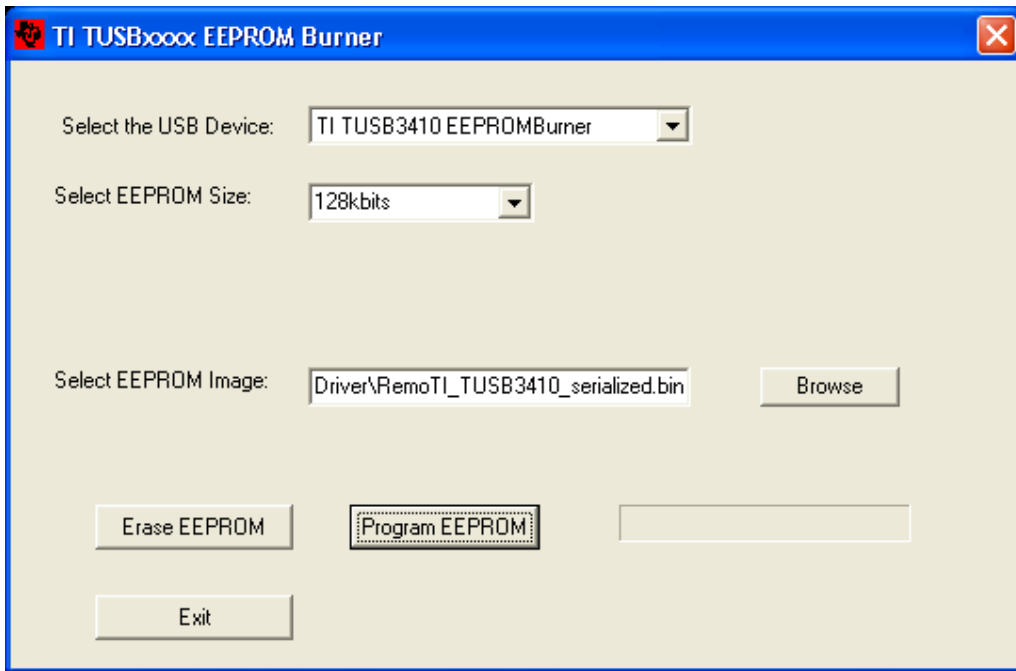


**Figure 16: Installing the EEPROM burner driver**

The device should now be appearing as an EEPROM burner device in the USB devices device list.

Start the EEPROM burner software, select the TUSB3410 EEPROM Burner devices from the device list, 128Kb EEPROM size and load the file  
 <Installation path>\Tools\Driver\ RemoTI\_TUSB3410\_serialized.bin

Remove the short on the pins 1(GND) and pin 11(I2C SDA) on the interface header before clicking "Program EEPROM"



**Figure 17: Using the EEPROM burner software**

After successful programming, unplug the mini-USB cable, mount the CC2530EM on the target module and plug in the mini-USB cable again. The target module will now appear as a COM port in the device manager.

## 9 Schematic and Layout

The complete design files including schematic and layout for the remote control, target module, and EM module can be downloaded from <http://www.ti.com/remoTI> (Requires login)

## 10 Document history

Revision	Date	Description/Changes
-	2009-04-23	First revision.

## IMPORTANT NOTICE

Texas Instruments Incorporated and its subsidiaries (TI) reserve the right to make corrections, modifications, enhancements, improvements, and other changes to its products and services at any time and to discontinue any product or service without notice. Customers should obtain the latest relevant information before placing orders and should verify that such information is current and complete. All products are sold subject to TI's terms and conditions of sale supplied at the time of order acknowledgment.

TI warrants performance of its hardware products to the specifications applicable at the time of sale in accordance with TI's standard warranty. Testing and other quality control techniques are used to the extent TI deems necessary to support this warranty. Except where mandated by government requirements, testing of all parameters of each product is not necessarily performed.

TI assumes no liability for applications assistance or customer product design. Customers are responsible for their products and applications using TI components. To minimize the risks associated with customer products and applications, customers should provide adequate design and operating safeguards.

TI does not warrant or represent that any license, either express or implied, is granted under any TI patent right, copyright, mask work right, or other TI intellectual property right relating to any combination, machine, or process in which TI products or services are used. Information published by TI regarding third-party products or services does not constitute a license from TI to use such products or services or a warranty or endorsement thereof. Use of such information may require a license from a third party under the patents or other intellectual property of the third party, or a license from TI under the patents or other intellectual property of TI.

Reproduction of TI information in TI data books or data sheets is permissible only if reproduction is without alteration and is accompanied by all associated warranties, conditions, limitations, and notices. Reproduction of this information with alteration is an unfair and deceptive business practice. TI is not responsible or liable for such altered documentation. Information of third parties may be subject to additional restrictions.

Resale of TI products or services with statements different from or beyond the parameters stated by TI for that product or service voids all express and any implied warranties for the associated TI product or service and is an unfair and deceptive business practice. TI is not responsible or liable for any such statements.

TI products are not authorized for use in safety-critical applications (such as life support) where a failure of the TI product would reasonably be expected to cause severe personal injury or death, unless officers of the parties have executed an agreement specifically governing such use. Buyers represent that they have all necessary expertise in the safety and regulatory ramifications of their applications, and acknowledge and agree that they are solely responsible for all legal, regulatory and safety-related requirements concerning their products and any use of TI products in such safety-critical applications, notwithstanding any applications-related information or support that may be provided by TI. Further, Buyers must fully indemnify TI and its representatives against any damages arising out of the use of TI products in such safety-critical applications.

TI products are neither designed nor intended for use in military/aerospace applications or environments unless the TI products are specifically designated by TI as military-grade or "enhanced plastic." Only products designated by TI as military-grade meet military specifications. Buyers acknowledge and agree that any such use of TI products which TI has not designated as military-grade is solely at the Buyer's risk, and that they are solely responsible for compliance with all legal and regulatory requirements in connection with such use.

TI products are neither designed nor intended for use in automotive applications or environments unless the specific TI products are designated by TI as compliant with ISO/TS 16949 requirements. Buyers acknowledge and agree that, if they use any non-designated products in automotive applications, TI will not be responsible for any failure to meet such requirements.

Following are URLs where you can obtain information on other Texas Instruments products and application solutions:

### Products

Amplifiers	<a href="http://amplifier.ti.com">amplifier.ti.com</a>
Data Converters	<a href="http://dataconverter.ti.com">dataconverter.ti.com</a>
DLP® Products	<a href="http://www.dlp.com">www.dlp.com</a>
DSP	<a href="http://dsp.ti.com">dsp.ti.com</a>
Clocks and Timers	<a href="http://www.ti.com/clocks">www.ti.com/clocks</a>
Interface	<a href="http://interface.ti.com">interface.ti.com</a>
Logic	<a href="http://logic.ti.com">logic.ti.com</a>
Power Mgmt	<a href="http://power.ti.com">power.ti.com</a>
Microcontrollers	<a href="http://microcontroller.ti.com">microcontroller.ti.com</a>
RFID	<a href="http://www.ti-rfid.com">www.ti-rfid.com</a>
RF/IF and ZigBee® Solutions	<a href="http://www.ti.com/lprf">www.ti.com/lprf</a>

### Applications

Audio	<a href="http://www.ti.com/audio">www.ti.com/audio</a>
Automotive	<a href="http://www.ti.com/automotive">www.ti.com/automotive</a>
Broadband	<a href="http://www.ti.com/broadband">www.ti.com/broadband</a>
Digital Control	<a href="http://www.ti.com/digitalcontrol">www.ti.com/digitalcontrol</a>
Medical	<a href="http://www.ti.com/medical">www.ti.com/medical</a>
Military	<a href="http://www.ti.com/military">www.ti.com/military</a>
Optical Networking	<a href="http://www.ti.com/opticalnetwork">www.ti.com/opticalnetwork</a>
Security	<a href="http://www.ti.com/security">www.ti.com/security</a>
Telephony	<a href="http://www.ti.com/telephony">www.ti.com/telephony</a>
Video & Imaging	<a href="http://www.ti.com/video">www.ti.com/video</a>
Wireless	<a href="http://www.ti.com/wireless">www.ti.com/wireless</a>

Mailing Address: Texas Instruments, Post Office Box 655303, Dallas, Texas 75265  
Copyright © 2009, Texas Instruments Incorporated