



# 2110A, 2111A, 2112A, 2113A Series Non-Relampable Panel Mount Indicator



## Description and Features

**Mounting:** Ø.310 MIN., supplied with push-on speednut SN1287-C

**Wire Leads:** No. 22 AWG (105°C) 4.40"/4.80" long, stripped .430"/.570"

**Lens:** Polycarbonate-neon transparent, incandescent-translucent

**Housing:** White Nylon

Underwriters Laboratories (UL) File No.E20356

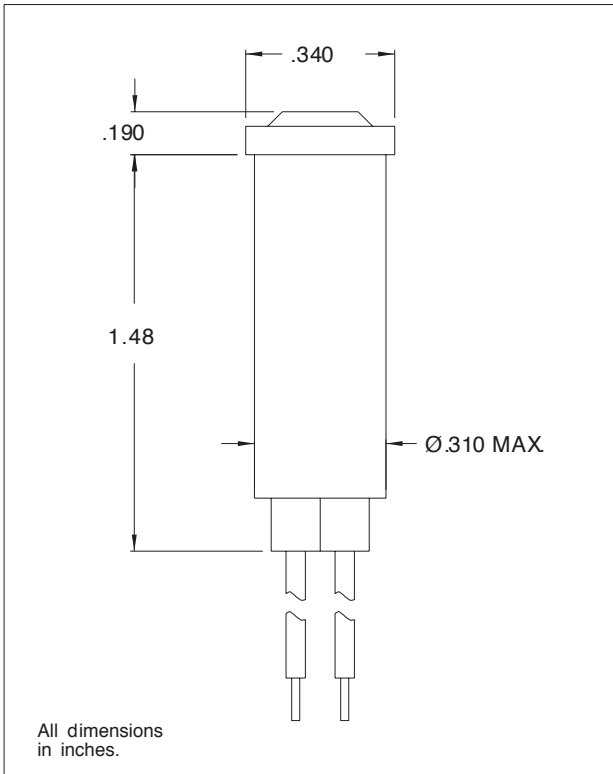
## Ordering Data

Lens Color	Neon	
	Model No. (105-125VAC)	Model No. (208-250VAC)
Red	2110A1	2111A1
Clear	2110A2	2111A2
Amber	2110A3	2111A3
White	2110A4	-
Green	2112A5*	2113A5*
Blue	2112A6**	2113A6**
Lamp Used	C2A+Resistor	C2A+Resistor
Lead Color	Black	Black/Red

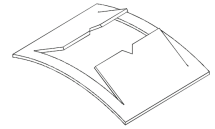
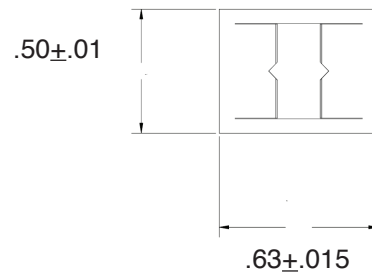
\* Incorporates G2B lamp and resistor.

\*\* Incorporates T2B lamp and resistor.

## Product Dimensions



Speed Nut SN1287-C



## Compliances and Approvals

