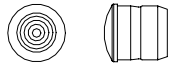


Distributed by:

**JAMECO<sup>®</sup>**  
**ELECTRONICS**

[www.Jameco.com](http://www.Jameco.com) ♦ 1-800-831-4242

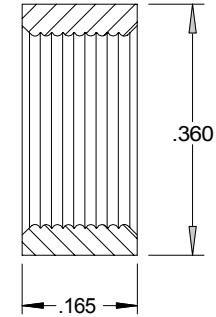
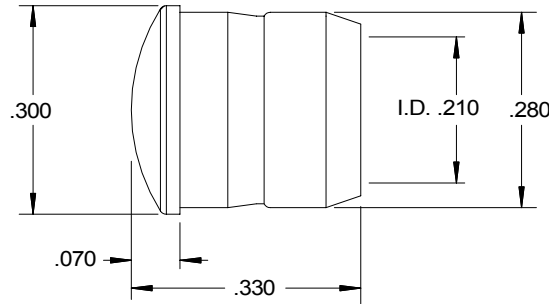
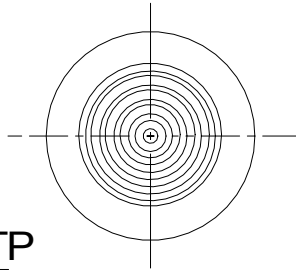
The content and copyrights of the attached  
material are the property of its owner.



ACTUAL SIZE

CMC 321 LENSE

RNG 268

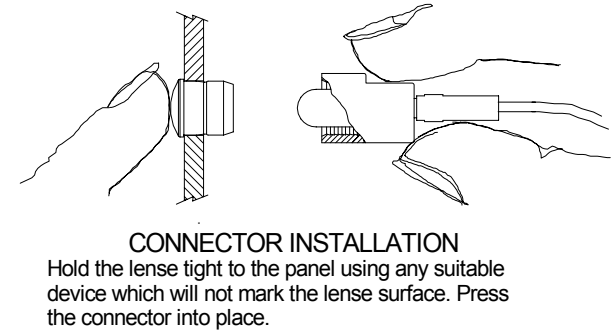
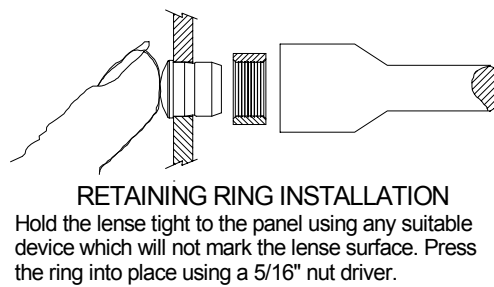
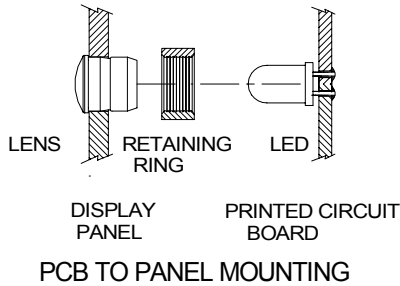


ORDERING CODES

MODEL CMC 321 RTP  
 CMC 321 (LENS)  
 RNG 268 (RETAINER)

COLOR \_\_\_\_\_

- RTP Red Transparent      BTP Blue Transparent
- ATP Amber Transparent    YTP Yellow Transparent
- GTP Green Transparent    CTP Clear Transparent



U.S. PAT. PEND.

NOTES:

MATERIAL: Lens - Polycarbonate  
 Retaining Ring - Polypropylene  
 DESIGN: Low profile lens using fresnel rings.  
 MOUNTING: Mounts thru the front of panel.  
 Hole size 9/32" (7.2mm) on 3/8" centers.  
 For PCB mounted LED use RNG 268 Retainer.

See VCC brochure for information on CNX connectors.

REVISIONS			
NO	DESCRIPTION	DATE	BY
1			
2			
3			
4			
5			

CLIPLITE<sup>®</sup> CMC 321 LENSE

**VCC VISUAL COMMUNICATIONS COMPANY, INC.**  
 7920-F Arjons Drive San Diego, California 92126 U.S.A.  
 Phone (858) 549-6900 Fax (858) 549-3520 e-mail vccsales@vcclite.com

TOLERANCES	SCALE	N/A	DATE	11/07/99	DRAWING NO.
DECIMAL ±.010	DIAMETER .003 TIR		DRAWN BY	JMS	<b>CMC 321A</b>
ANGLE ± 30'	RADII .008 Max	CHK'D			