

Description

The Modulino® Thermo, featuring the HS3003 sensor, measures both temperature and humidity, making it ideal for environmental monitoring, indoor climate control, and various IoT applications. It provides accurate readings in a compact form factor and integrates seamlessly into the Qwiic ecosystem.

Target Areas

Maker, beginner, education



Contents

1 Application Examples	3
2 Features	4
2.1 Contents	4
3 Related Products	4
4 Rating	4
4.1 Recommended Operating Conditions	4
5 Power Tree	5
6 Block Diagram	5
7 Functional Overview	6
7.1 Technical Specifications	6
7.2 Pinout	7
7.3 Power Specifications	8
7.4 Mechanical Information	8
7.5 I2C Address Reference	9
8 Device Operation	9
8.1 Getting Started	9



1 Application Examples

The Modulino® Thermo node can be used in numerous scenarios within IoT and electronics projects:

- **Indoor Climate Control** Monitor real-time temperature and humidity levels to automatically adjust HVAC systems or trigger alerts.
- **Greenhouse Monitoring** Maintain precise growing conditions by tracking changes in humidity and temperature, ensuring plant health and growth.
- **Smart Home Automation** Combine the Modulino® Thermo with other nodes, such as movement or distance sensors, to create fully automated home systems that respond to environmental changes.



2 Features

- Utilizes the **HS3003** sensor to measure temperature and humidity.
- Communicates via **I2C** (Qwiic connector) at 3.3V (standard).
- Designed with an **additional header** for optional connections.
- Ideal for **environmental monitoring** in IoT and home automation applications.

2.1 Contents

SKU	Name	Purpose	Quantity
ABX00103	Modulino® Thermo	Measure temperature and humidity	1
	I2C Qwiic cable	Compatible with the Qwiic standard	1

3 Related Products

- *SKU: ASX00027* – Arduino® Sensor Kit
- *SKU: K000007* – Arduino® Starter Kit
- *SKU: AKX00026* – Arduino® Oplà IoT Kit

4 Rating

4.1 Recommended Operating Conditions

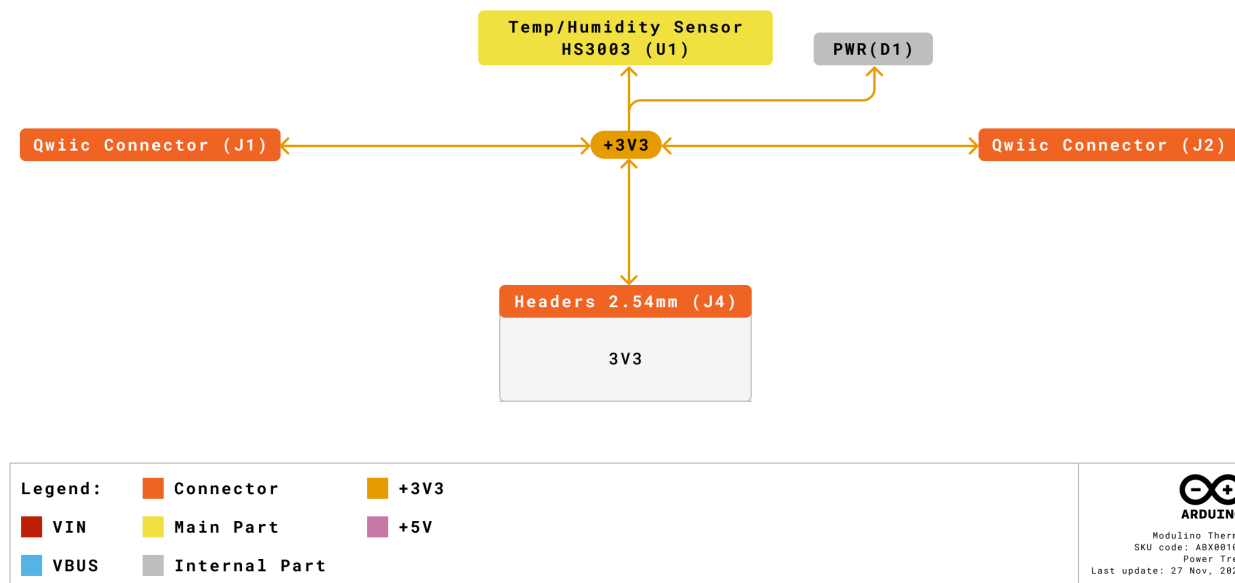
- **Sensor supply range:** 2.3V – 5.5V
- **Powered at 3.3V** through the Qwiic interface (in accordance with the Qwiic standard)
- **Operating temperature:** -40 °C to +125 °C

Typical current consumption:

- ~24.4 μA (at 14-bit resolution, 3.3V)

5 Power Tree

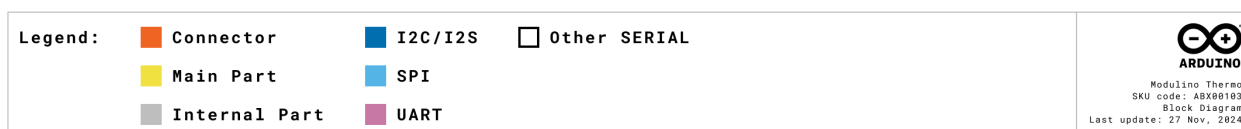
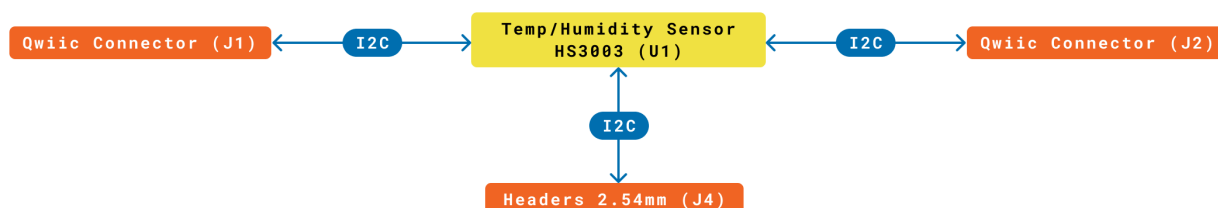
The power tree for the Modulino® node can be consulted below:



Modulino® Thermo Power Tree

6 Block Diagram

This module is designed to be placed on an I2C bus, allowing the on-board HS3003 sensor to communicate with a host microcontroller via I2C.



Modulino® Thermo block diagram

7 Functional Overview

The Modulino® Thermo node uses the HS3003 sensor to measure both temperature and humidity. Data is accessed through I2C (via the Qwiic connector at 3.3V). It is well-suited for climate control, environmental logging, and wearable IoT.

7.1 Technical Specifications

Specification	Details
Sensor	HS3003
Supply Voltage	3.3 V
Power Consumption	24.4 μA (14-bit resolution, 3.3V supply)
Range	0-100% RH, -40 °C to +125 °C
Accuracy	Humidity: ±2.8% RH, Temperature: ±0.25 °C
Resolution	14-bit humidity, 14-bit temperature
Communication	I2C

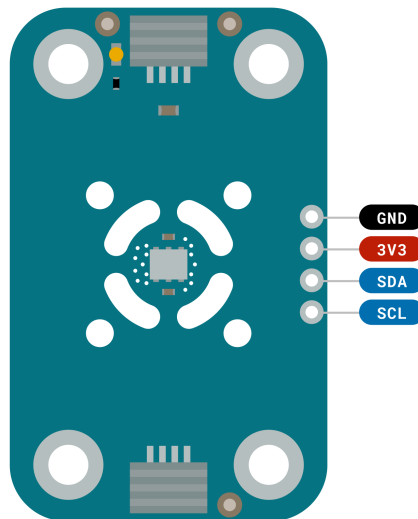
7.2 Pinout

Qwiic / I2C (1×4 Header)

Pin	Function
GND	Ground
3.3V	Power Supply (3.3V)
SDA	I2C Data
SCL	I2C Clock

These pads and the Qwiic connectors share the same I2C bus. You can optionally solder header pins here.

Note: The board may also include pads for mounting pull-up resistors, not installed by default.



Legend:	■ Digital	■ I2C	 Other SERIAL
■ Power	 Analog	■ SPI	■ Analog
 Ground	 Main Part	■ UART/USART	 PWM/Timer



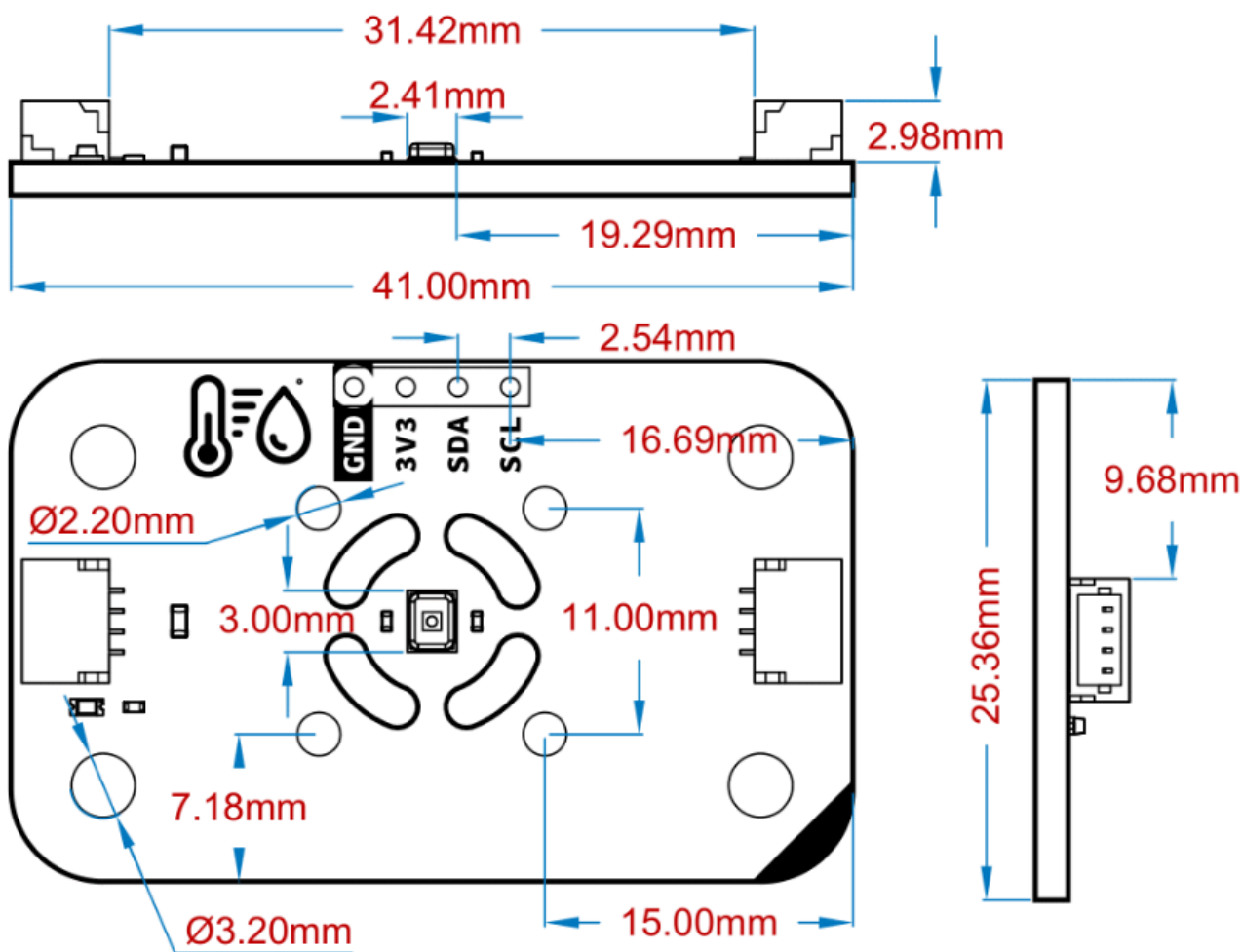
ARDUINO
 Moduino Thermo
 SKU code: ABX00103
 Pinout
 Last update: 18 Jun, 2024

Pinout Overview

7.3 Power Specifications

- **Nominal operating voltage:** 3.3V via Qwiic

7.4 Mechanical Information



Modolino® Thermo Mechanical Information

- Board dimensions: 41 mm × 25.36 mm
- Thickness: 1.6 mm (± 0.2 mm)
- Four mounting holes ($\text{Ø} 3.2$ mm)
 - Hole spacing: 16 mm vertically, 32 mm horizontally

7.5 I2C Address Reference

Board Silk Name	Sensor	Modulino® I2C Address (HEX)	Editable Addresses (HEX)	Hardware I2C Address (HEX)
MODULINO THERMO	HS3003	0x44	Any custom address (via software config)	0x44

Note: Default address is **0x44**. Adjustments may be made via software if multiple identical sensors are on the same bus.

8 Device Operation

The Modulino® Thermo node acts as an I2C target device on the Qwiic bus. Simply connect it via a Qwiic cable to the 3.3V I2C interface of your microcontroller. Read humidity and temperature values via standard I2C transactions.

8.1 Getting Started

Use the Arduino IDE or Arduino Cloud Editor to program your microcontroller. Libraries for HS3003 or generic humidity/temperature sensors can help streamline data acquisition. Ensure your microcontroller and this node operate on the same 3.3V reference for the Qwiic bus.

Company Information

Company name	Arduino SRL
Company Address	Via Andrea Appiani, 25 - 20900 MONZA (Italy)

Reference Documentation

Ref	Link
Arduino IDE (Desktop)	https://www.arduino.cc/en/Main/Software
Arduino Courses	https://www.arduino.cc/education/courses
Arduino Documentation	https://docs.arduino.cc/
Arduino IDE (Cloud)	https://create.arduino.cc/editor
Cloud IDE Getting Started	https://docs.arduino.cc/cloud/web-editor/tutorials/getting-started/getting-started-web-editor
Project Hub	https://projecthub.arduino.cc/
Library Reference	https://github.com/arduino-libraries/
Online Store	https://store.arduino.cc/



Revision History

Date	Revision	Changes
17/06/2025	3	Nomenclature updates
23/05/2025	2	Power info
14/05/2025	1	First release