

5235 MHz SMD Dielectric Filter



AFII-DF-0032

Request Samples



Check Inventory



8.7 x 4.2 x 3.0 mm
RoHS Compliant
MSL Level = N/A

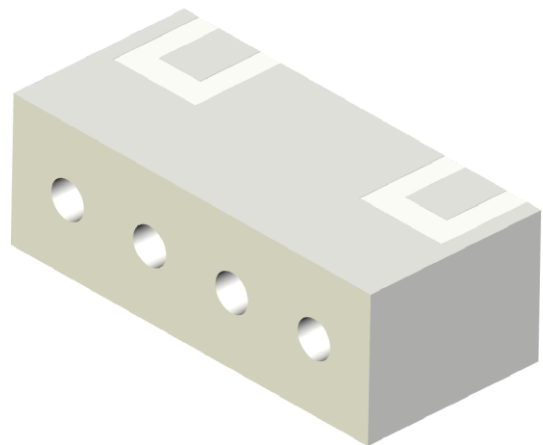
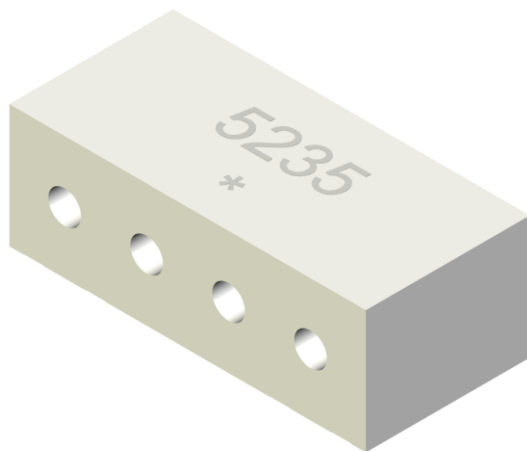
Features

- Bandpass Dielectric Filter with 180 MHz bandwidth
- Surface Mount 8.7 x 4.2 x 3.0 mm package
- Single-Ended Input and Output
- Excellent selectivity with high out-of-band rejection
- RoHS Compliant

Applications

- WiFi 6E/7 Access Points and Routers
- Industrial IoT
- Enterprise Networks
- 5 GHz (U-NII-1 / U-NII-2A)

Product Image



5235 MHz SMD Dielectric Filter



AFII-DF-0032

Request Samples



Check Inventory



8.7 x 4.2 x 3.0 mm
RoHS Compliant
MSL Level = N/A

Electrical Specification

Parameters	Minimum	Typical	Maximum	Units	Notes
Center Frequency (fc)	-	5235.0	-	MHz	
Bandwidth	-	180	-	MHz	5150 – 5350 MHz
Insertion Loss	-	1.25	3.3	dB	5150 – 5350 MHz
VSWR	≤ 2.0				5150 – 5350 MHz
Amplitude Ripple	-	-	1.3	dB _{p-p}	5150 – 5350 MHz
Attenuation	50	-	-	dB	5490 ~ 5850 MHz
Input Power			1	W	
Source Impedance ⁽¹⁾ (single ended)	-	50	-	Ω	
Load Impedance ⁽¹⁾ (single ended)	-	50	-	Ω	

Notes: (1) No matching network needed (Ref. Testing Environment Circuit as shown in “EVB Measurement Circuit” section).

Mechanical Specification

Parameters	Specifications
Dimension	8.7 x 4.2 x 3.0 mm
Mounting Type	SMD Mount

Environmental Specification

Parameters	Specifications
Operating Temperature Range	-40°C ~ +85°C
Storage Temperature Range	-40°C ~ +85°C
RoHS Compliant	Yes

Ordering Information

Part Number	Description
AFII-DF-0032	5235 MHz SMD Dielectric Filter
AFII-DF-0032-EVB	5235 MHz SMD Dielectric Filter Evaluation Board



5101 Hidden Creek Ln Spicewood TX 78669
Phone: 512-371-6159 | Fax: 512-351-8858
For terms and conditions of sales, please visit:
www.abracon.com

REVISED: 09-09-24

ABRACON IS
ISO9001-2015
CERTIFIED

5235 MHz SMD Dielectric Filter



AFII-DF-0032

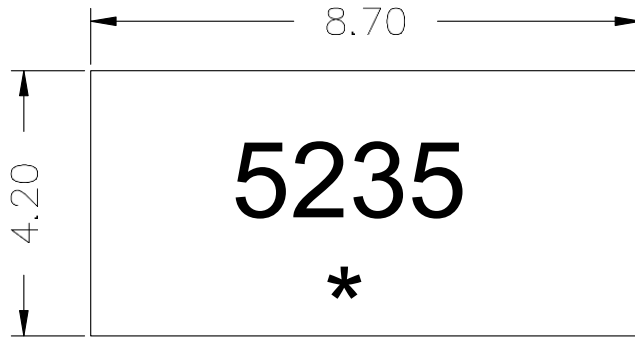
Request Samples

Check Inventory

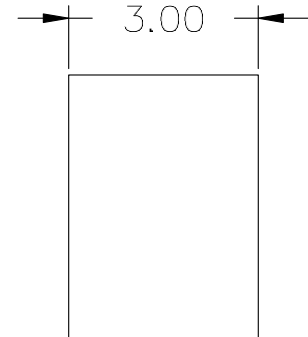
8.7 x 4.2 x 3.0 mm
RoHS Compliant
MSL Level = N/A

Product Dimensions

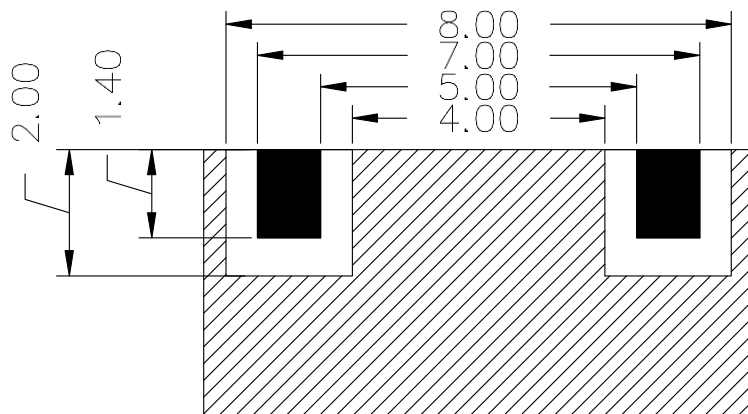
TOP VIEW



SIDE VIEW



BOTTOM VIEW



TOLERANCE : ± 0.20

UNIT: mm

*: MONTH CODE

Unit : mm

5235 MHz SMD Dielectric Filter



AFII-DF-0032

Request Samples

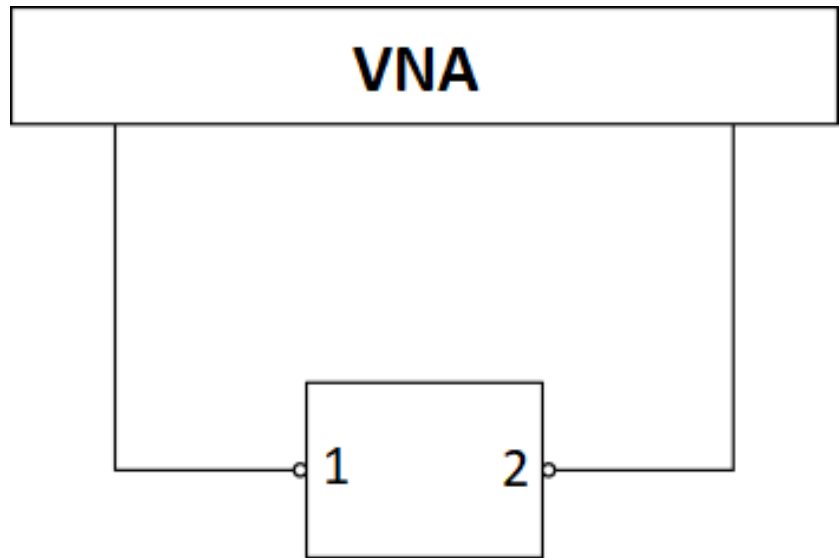
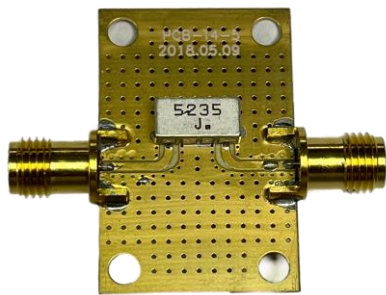


Check Inventory



8.7 x 4.2 x 3.0 mm
RoHS Compliant
MSL Level = N/A

EVB Measurement Circuit



5235 MHz SMD Dielectric Filter



AFII-DF-0032

Request Samples



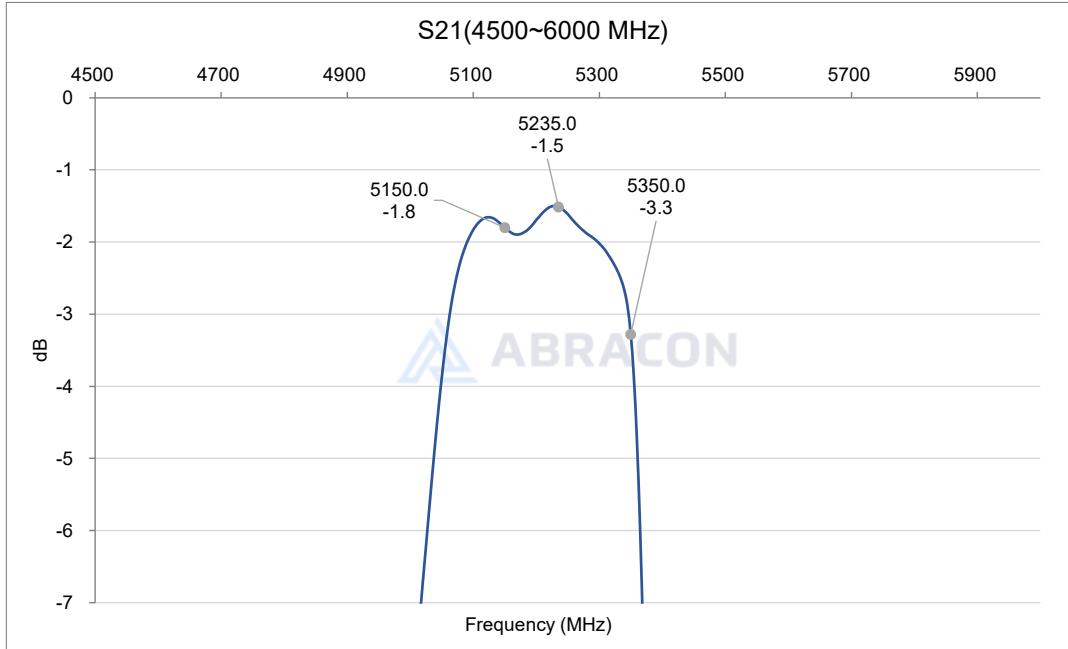
Check Inventory



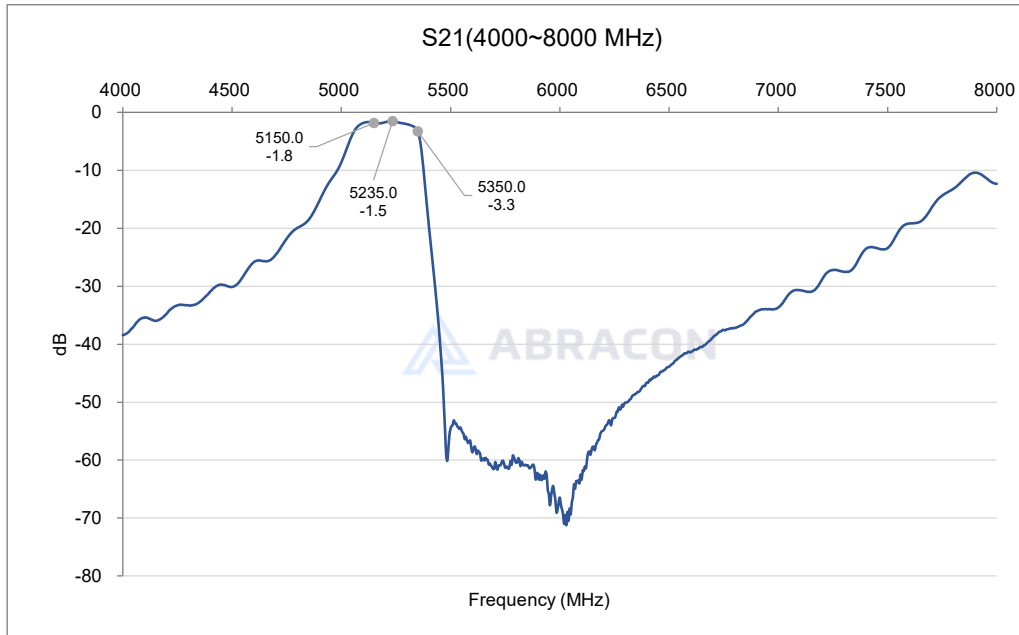
8.7 x 4.2 x 3.0 mm
RoHS Compliant
MSL Level = N/A

Frequency Characteristics

S21 narrow band



S21 wide band



5235 MHz SMD Dielectric Filter



AFII-DF-0032

Request Samples

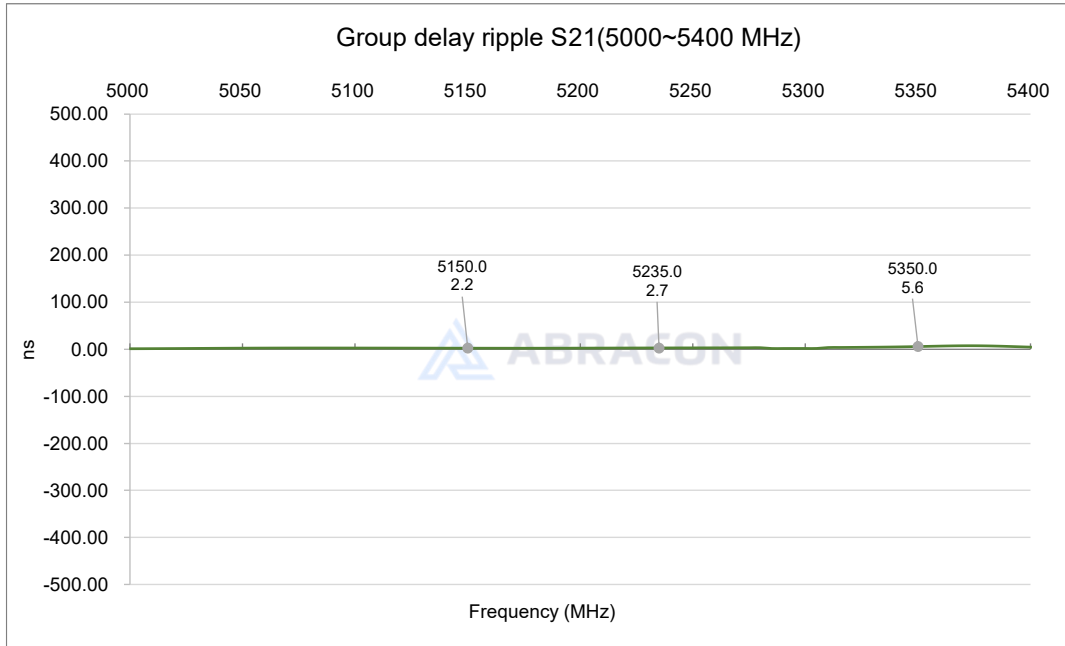


Check Inventory



8.7 x 4.2 x 3.0 mm
RoHS Compliant
MSL Level = N/A

Group Delay Ripple



5235 MHz SMD Dielectric Filter



AFII-DF-0032

Request Samples

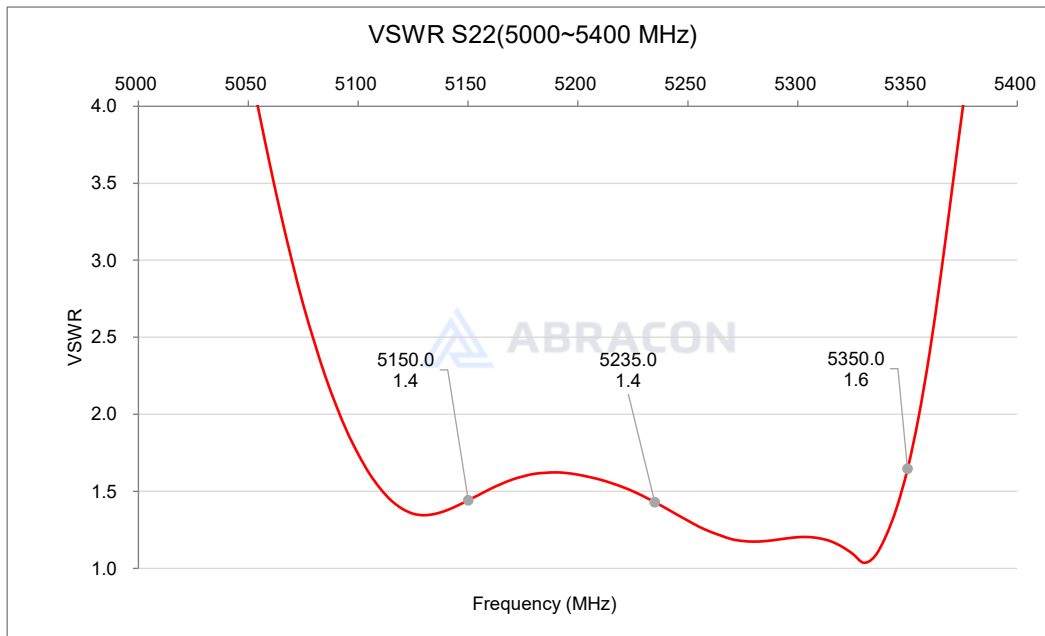
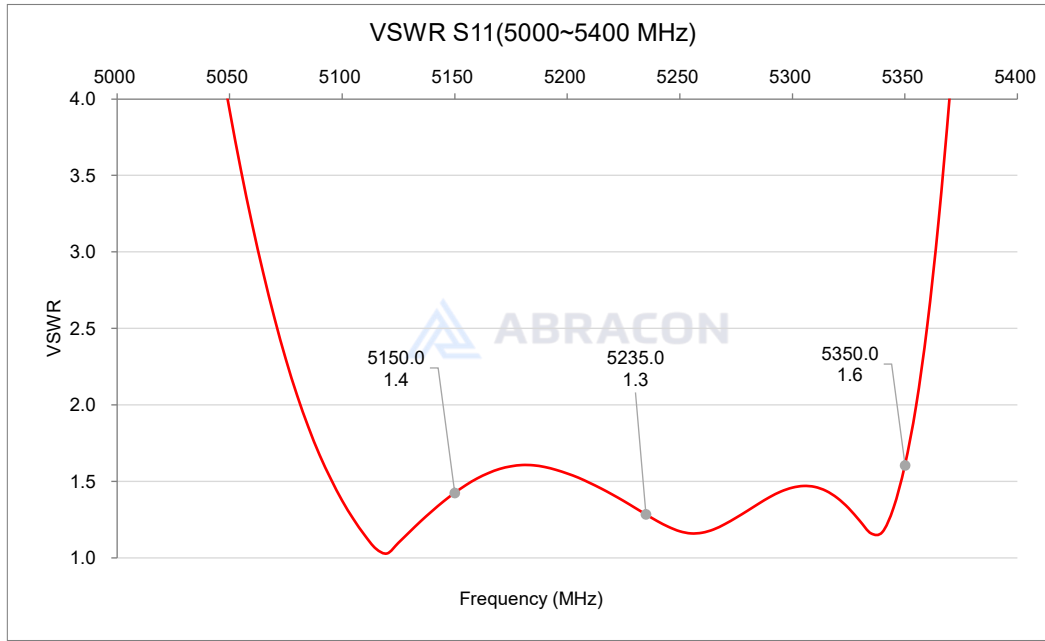


Check Inventory



8.7 x 4.2 x 3.0 mm
RoHS Compliant
MSL Level = N/A

VSWR (S11 & S22)



5235 MHz SMD Dielectric Filter



AFII-DF-0032

Request Samples



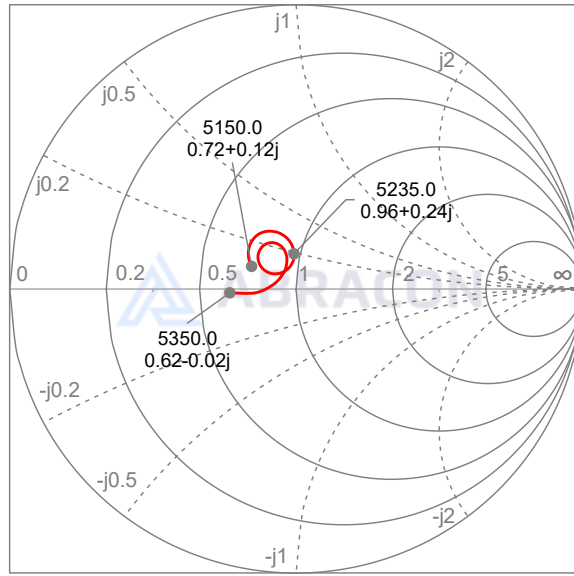
Check Inventory



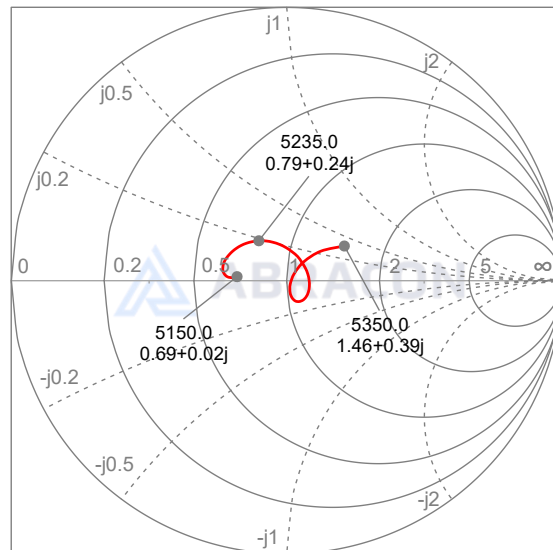
8.7 x 4.2 x 3.0 mm
RoHS Compliant
MSL Level = N/A

Smith Chart (S11 & S22)

Smith chart S11 (5150~5350MHz)



Smith chart S22 (5150~5350MHz)



5235 MHz SMD Dielectric Filter



AFII-DF-0032

Request Samples



Check Inventory



8.7 x 4.2 x 3.0 mm
RoHS Compliant
MSL Level = N/A

Reflow Profile [JEDEC J-STD-020]

Solder Paste: Ag3.0/Cu0.5/Sn

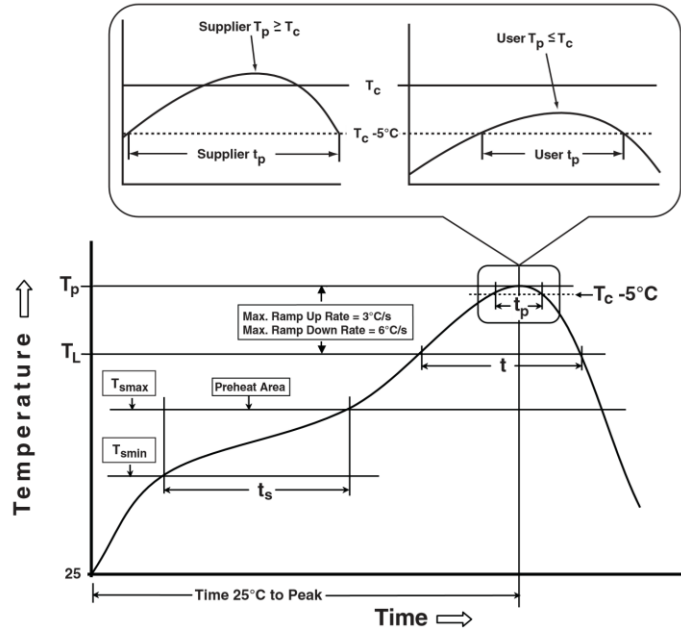


Table 1

SnPb Eutectic Process Classification Temperatures (T_c)		
Package Thickness	Volume mm^3 <350	Volume mm^3 ≥ 350
<2.5mm	235°C	220°C
$\geq 2.5mm$	220°C	220°C

Table 2

Pb-Free Process Classification Temperatures (T_c)			
Package Thickness	Volume mm^3 <350	Volume mm^3 350-2000	Volume mm^3 >2000
<1.6mm	260°C	260°C	260°C
1.6mm - 2.5mm	260°C	250°C	245°C
>2.5mm	240°C	240°C	240°C

Profile Feature	Sn-Pb Eutectic Assembly	Pb-Free Assembly
Preheat / soak		
Temperature minimum (T_{smin})	100°C	150°C
Temperature maximum (T_{smax})	150°C	200°C
Time (T_{smin} to T_{smax}) (t_s)	60 – 120 sec.	60 – 120 sec.
Average ramp-up rate (T_{smax} to T_p)	3°C/sec. max	3°C/sec. max
Liquidous temperature (T_L)	183°C	220°C
Time at Liquidous (T_L)	60 – 150 sec.	30 – 100 sec.
Peak package body temperature (T_p)*	See Table 1	See Table 2
Time (T_p)** within 5°C of the specified classification temperature (T_c)	20 sec.	5 sec.
Ramp-down rate (T_p to T_{smax})	6°C/sec. max	2-6°C/sec. max
Time 25°C to peak temperature	6 min. max	8 min. max
Reflow cycles	2 max	2 max

*Tolerance for peak profile temperature (T_p) is defined as a supplier minimum and a user maximum.

**Tolerance for time at peak profile temperature (t_p) is defined as a supplier minimum and a user maximum.

5235 MHz SMD Dielectric Filter



AFII-DF-0032

Request Samples



Check Inventory



8.7 x 4.2 x 3.0 mm
RoHS Compliant
MSL Level = N/A

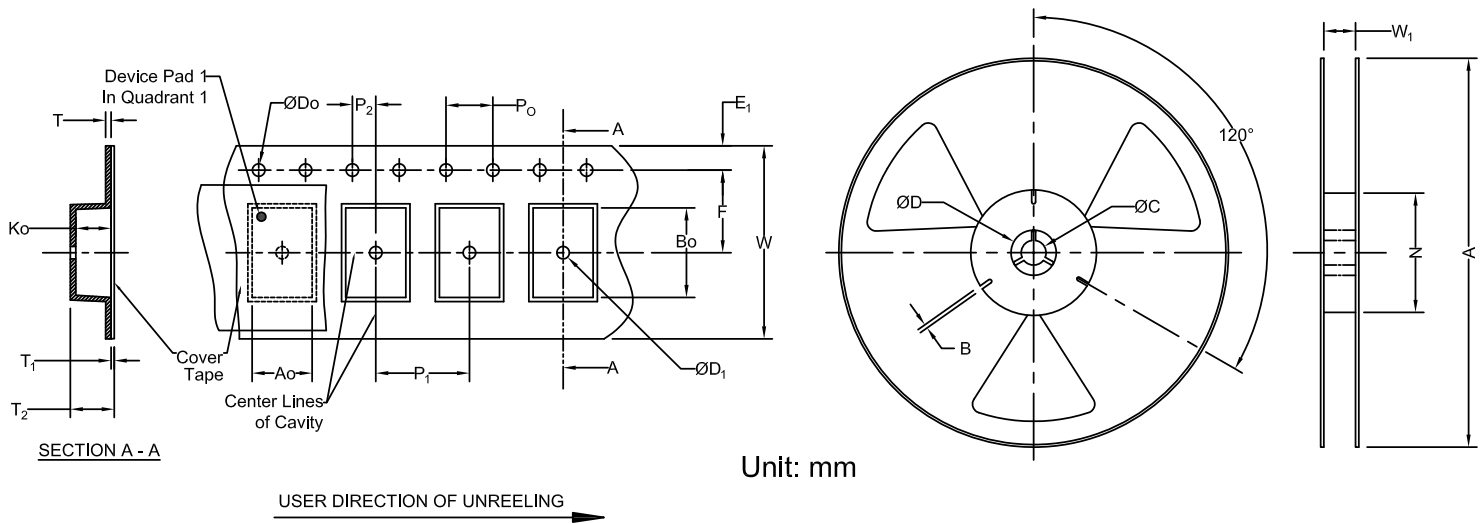
Packaging

Per plastic reel 2000 pieces of dielectric ceramic part

Per inner box 1 reel

Per package 10 inner boxes

Tape & Reel Dimension



Carrier Tape Specifications (mm)

E ₁	P ₀	F	P ₁	P ₂	D ₀	W	A ₀	B ₀	K ₀	Reel Qty
1.75 ± 0.1	4.0 ± 0.1	7.5 ± 0.1	8.0 ± 0.1	2.0 ± 0.1	1.5 ± 0.1	16.0 ± 0.2	4.6 ± 0.1	9.0 ± 0.2	3.3 ± 0.1	2,000

Reel Specifications (mm)

A	B	W ₁	N	C
330 ± 3	2.0 ± 0.5	22.4max	80min	13 ± 0.5

ATTENTION: Abracon LLC's products are Commercial-Off-The-Shelf ("COTS"), which are designed, intended, and validated for use in commercial, industrial, and automotive applications. The customer is responsible for testing and verifying the performance of an Abracon solution to meet their system-level requirements.



5101 Hidden Creek Ln Spicewood TX 78669
 Phone: 512-371-6159 | Fax: 512-351-8858
 For terms and conditions of sales, please visit:
www.abracon.com

REVISED: 09-09-24

ABRACON IS
 ISO9001-2015
 CERTIFIED