



PARA LIGHT ELECTRONICS CO., LTD.
4F, No.1, Lane 93, Chien Yi Road, Chung Ho City, Taipei, Taiwan,
Tel: 886-2-2225-3733 Fax: 886-2-2225-4800
E-mail: para@para.com.tw <http://www.para.com.tw>

DATA SHEET

PART NO.: SZS115JYLGCT

REV: A / 0

CUSTOMER'S APPROVAL : _____

DCC : _____

DRAWING NO. : DS-78-16-002

DATE : 2016-5-31

PAGE

1 of 14

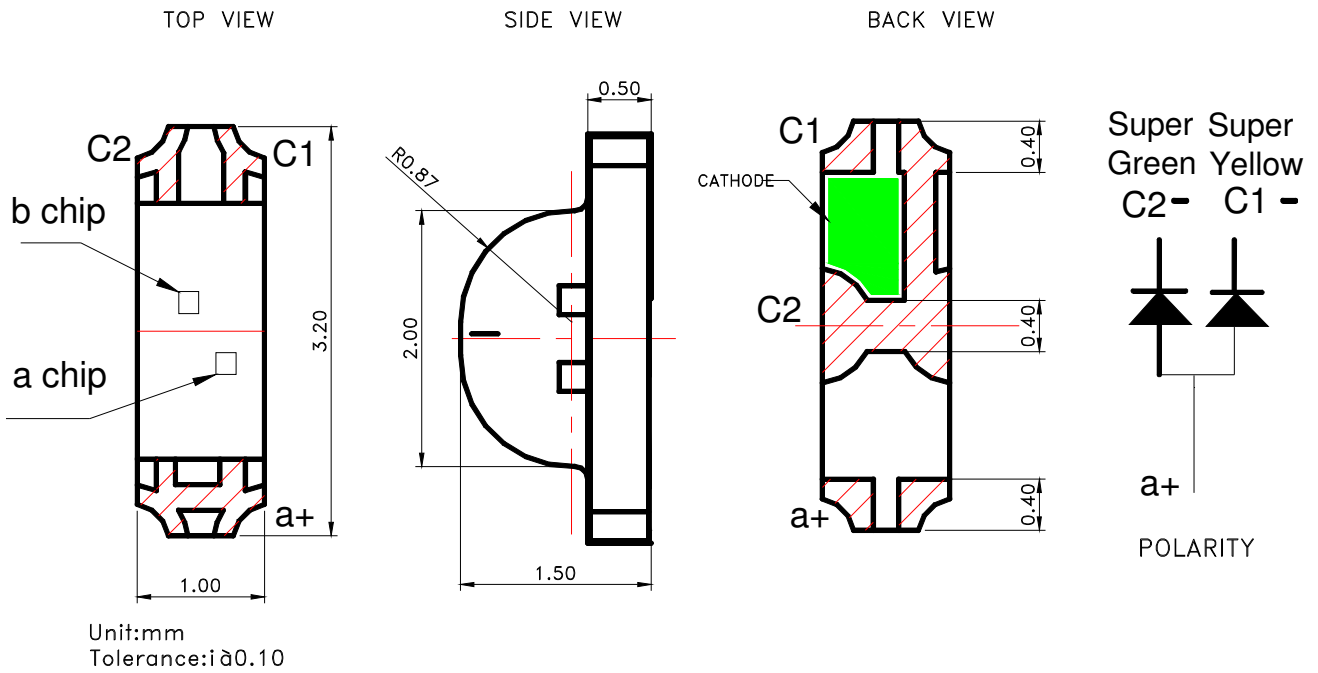


SURFACE MOUNT DEVICE LED

Part No. : SZS115JYLGCT

REV:A / 0

● PACKAGE OUTLINE DIMENSIONS



Notes:

1. a chip: Super Yellow; b chip: Super Green
2. All dimensions are in millimeters.
3. Tolerance is $\pm 0.1\text{mm}$ (.004") unless otherwise noted.

● Features

- * Dual color, common anode, side view Chip LED.
- * Package in 8mm tape on 7" diameter reels.
- * Compatible with automatic Pick & Place equipment.
- * Compatible with Reflow soldering and Wave soldering processes.
- * EIA STD package.
- * I.C. compatible.
- * Pb free product.
- * Meet RoHS Green Product.



SURFACE MOUNT DEVICE LED

Part No. : SZS115JYLGCT

REV:A / 0

● **Chip Materials**

| chip | Light Color | Dice Material | Lens Color |
|------|------------------|---------------|-------------|
| a | JY: Super Yellow | AlInGaP | Water Clear |
| b | LG: Super Green | InGaN | |

● **Absolute Maximum Ratings(Ta=25°C)**

| Symbol | Parameter | Rating | | Unit |
|------------------|--|--------------|-------------|-------|
| | | Super Yellow | Super Green | |
| P _D | Power Dissipation | 75 | 100 | mW |
| I _{PF} | Peak Forward Current (1/10 Duty Cycle, 0.1ms Pulse Width) | 80 | 100 | mA |
| I _F | Continuous Forward Current | 30 | 25 | mA |
| - | De-rating Linear From 25°C | 0.25 | 0.25 | mA/°C |
| V _R | Reverse Voltage | 5 | 5 | V |
| ESD | Electrostatic Discharge Threshold(HBM) ^{Note A} | 2000 | 1000 | V |
| T _{opr} | Operating Temperature Range | -40 ~ +85 | | °C |
| T _{stg} | Storage Temperature Range | -40 ~ +85 | | °C |

Note A:

HBM: Human Body Model. Seller gives no other assurances regarding the ability of to withstand ESD

● **Electro-Optical Characteristics(Ta=25°C)**

| Parameter | Symbol | Super Yellow | Super Green | Unit | Test Condition |
|--------------------------|--------|--------------------|-------------|------|-------------------|
| Luminous Intensity | Min. | 71 | 450 | mcd | IF=20mA |
| | Typ. | 85 | 580 | | |
| Viewing Angle | Typ. | 2 θ 1/2 130 | | deg | Note 2 |
| Peak Wavelength | Typ. | λ _p 591 | 518 | nm | Measurement @Peak |
| Dominant Wavelength | Typ. | λ _d 590 | 522 | nm | IF=20mA |
| Spectral Line Half-Width | Typ. | Δ λ 16 | 15 | nm | |
| Forward Voltage | Typ. | 2.0 | 3.0 | V | IF =20mA |
| | Max. | 2.4 | 3.3 | | |
| Reverse Current | Max. | IR 10 | 50 | μ A | VR = 5V |



SURFACE MOUNT DEVICE LED

Part No. : SZS115JYLGCT

REV:A / 0

● Bin Code List

| Luminous Intensity(IV), Unit:mcd@20mA | | | | | |
|---------------------------------------|-----|-----|----------------------|-----|-----|
| Super Yellow(a chip) | | | Super Green (b chip) | | |
| Bin Code | Min | Max | Bin Code | Min | Max |
| Q | 71 | 112 | U | 450 | 710 |
| R | 112 | 180 | | | |

Tolerance of each bin are $\pm 15\%$

| Forward Voltage(VF), Unit:V@20mA | | |
|----------------------------------|-----|-----|
| Super Green (b chip) | | |
| Bin Code | Min | Max |
| 13 | 2.8 | 2.9 |
| 14 | 2.9 | 3.0 |
| 15 | 3.0 | 3.1 |
| 16 | 3.1 | 3.2 |
| 17 | 3.2 | 3.3 |

Tolerance of each bin are ± 0.1 Volt

| Dominant Wavelength (Hue),Unit: nm@20mA | | | | | |
|---|-----|-----|----------------------|-----|-----|
| Super Yellow(a chip) | | | Super Green (b chip) | | |
| Bin Code | Min | Max | Bin Code | Min | Max |
| YA | 587 | 590 | AP | 520 | 525 |
| YB | 590 | 593 | AQ | 525 | 530 |
| YC | 593 | 596 | | | |

Tolerance of each bin are ± 1 nm

Notes:

- Luminous intensity is measured with a light sensor and filter combination that proximities the CIE eye-response curve.
- $\theta 1/2$ is the off-axis angle at which the luminous intensity is half the axial luminous intensity.
- The dominant wavelength λd is derived from the CIE chromaticity diagram and represents the single wavelength which defines the color of the device.
- Caution in ESD :
Static Electricity and surge damages the LED. It is recommended use a wrist band or anti-electrostatic glove when handling the LED. All devices, equipment and machinery must be properly grounded.
- Major standard testing equipment by "Instrument System" Model : CAS140B Compact Array Spectrometer and "KEITHLEY" Source Meter Model : 2400.



SURFACE MOUNT DEVICE LED

Part No. : SZS115JYLGCT

REV:A / 0

● Super Yellow Typical Electro-Optical Characteristics Curves

(25°C Ambient Temperature Unless Otherwise Noted)

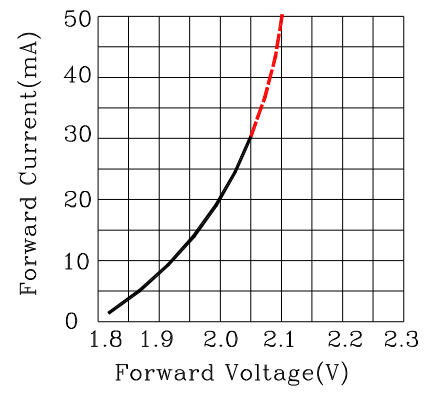


Fig.2 Forward Current vs.Forward Voltage

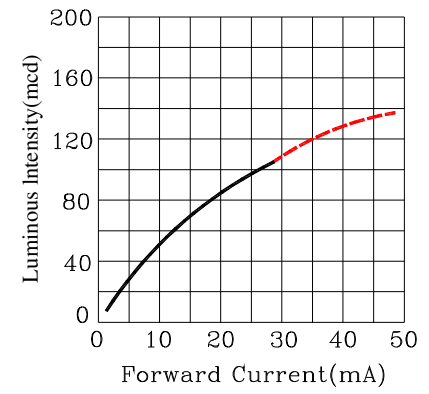


Fig.3 Luminous Intensity vs.Forward Current

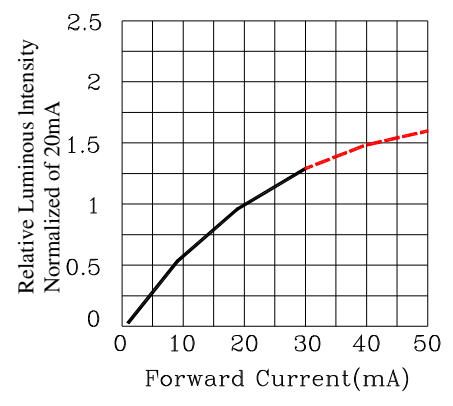


Fig.4 Relative Luminous Intensity vs.Forward Current

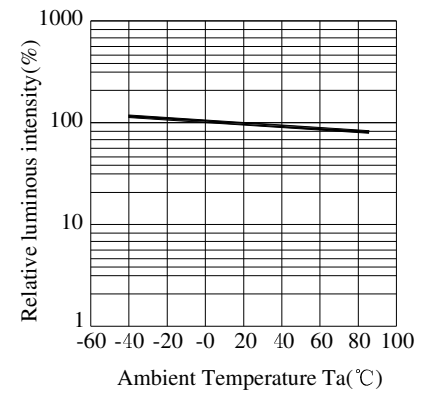


Fig.5 Luminous Intensity vs.Ambient Temperature

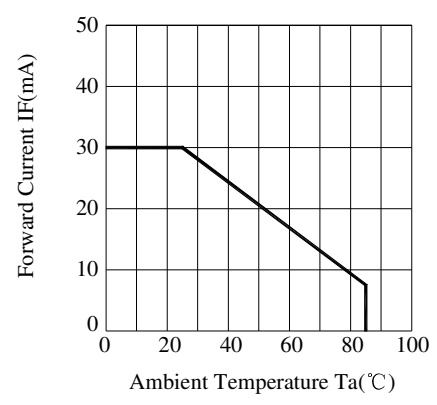


Fig.6 Forward Current Derating Curve

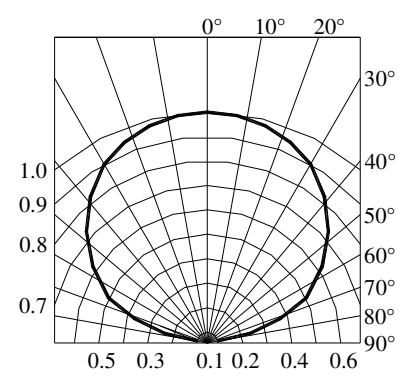


Fig.7 Relative Intensity vs.Angle



SURFACE MOUNT DEVICE LED

Part No. : SZS115JYLGCT

REV:A / 0

● Super Green Typical Electro-Optical Characteristics Curves

(25°C Ambient Temperature Unless Otherwise Noted)

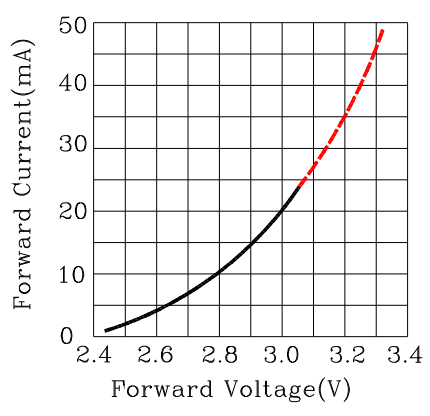


Fig.2 Forward Current vs.Forward Voltage

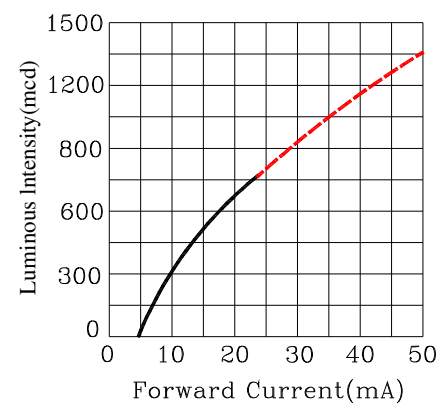


Fig.3 Luminous Intensity vs.Forward Current

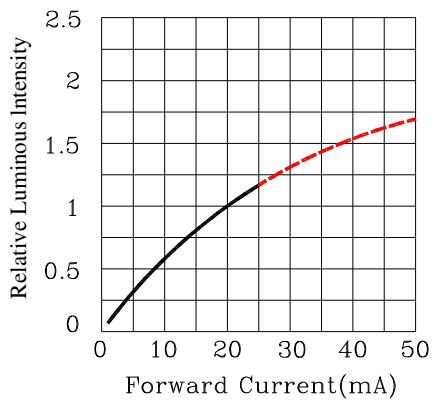


Fig.4 Relative Luminous Intensity vs.Forward Current

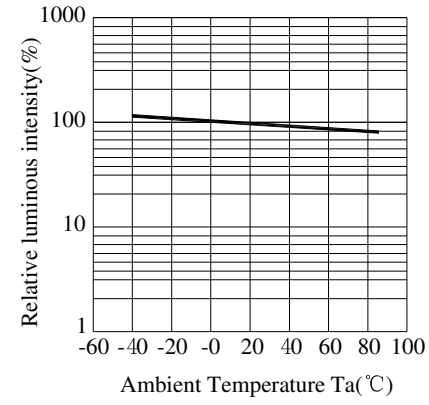


Fig.5 Luminous Intensity vs.Ambient Temperature

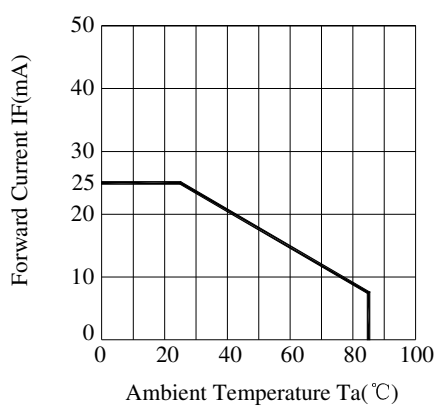


Fig.6 Forward Current Derating Curve

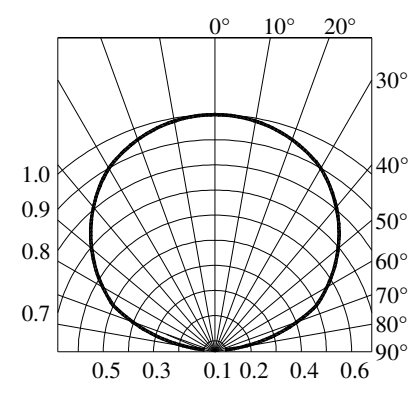


Fig.7 Relative Intensity vs.Angle



SURFACE MOUNT DEVICE LED

Part No. : SZS115JYLGCT

REV:A / 0

● Label Explanation

ITEM CODE:PARRA LIGHT

PART NO: SZS115JYLGCT

IV --- Luminous Intensity Code

LOT NO: EM S L 12 09 0110
 A B C D E F

A---EM: Emos Code

B---S:SMD

L---Local

D---Year

E---Month

F---SPEC.

PACKING QUANTITY OF BAG :

3000pcs for 150、170、110、155、115 series

4000pcs for 191 series

5000pcs for 192 series

DATE CODE: 2012 09 10
 G H I

G--- Year

H--- Month

I --- Day



SURFACE MOUNT DEVICE LED

Part No. : SZS115JYLGCT

REV:A / 0

● Typical Electro-Optical Characteristics Curves

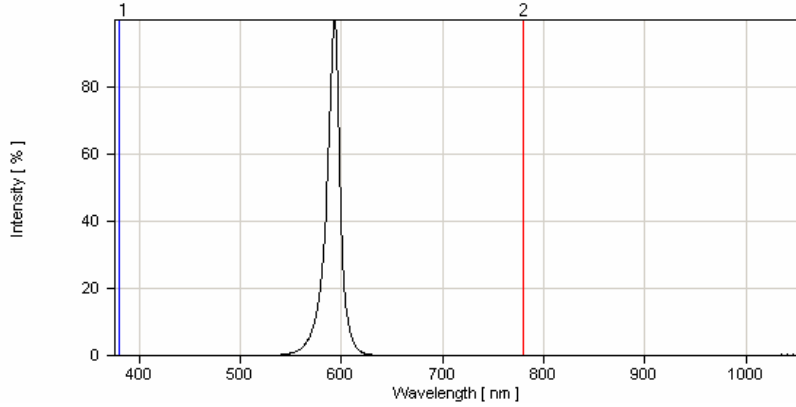


Fig.1 Super Yellow Relative Intensity vs. Wavelength

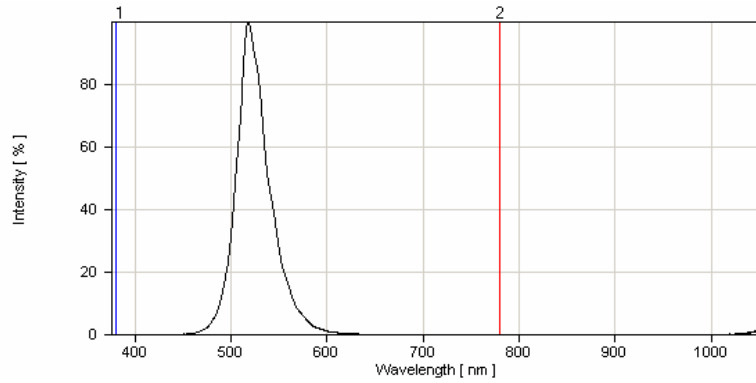
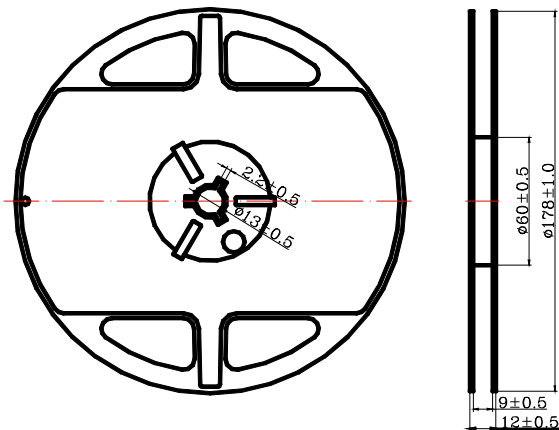


Fig.2 Super Green Relative Intensity vs. Wavelength

● Reel Dimensions



Notes:

1. Taping Quantity: 3000pcs.
2. The tolerances unless mentioned is $\pm 0.1\text{mm}$, Angle $\pm 0.5^\circ$, Unit: mm.

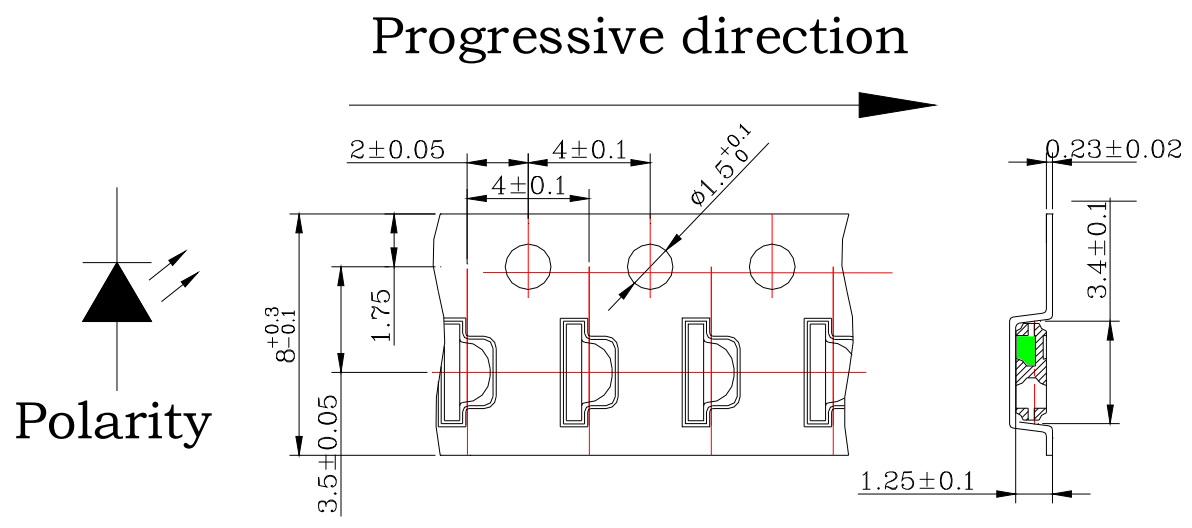


SURFACE MOUNT DEVICE LED

Part No. : SZS115JYLGCT

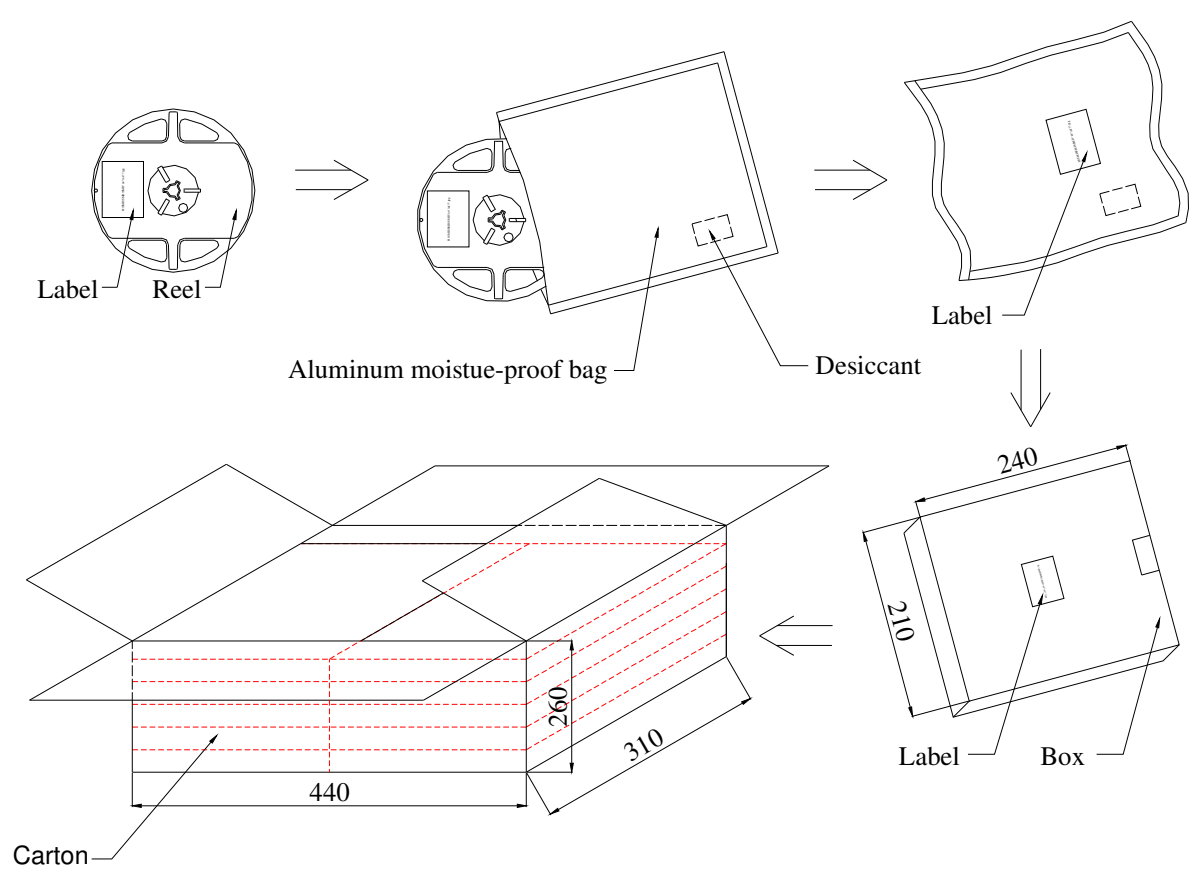
REV:A / 0

● Package Dimensions Of Tape And Reel



Notes : All dimensions are in millimeters.

Moisture Resistant Packaging



Notes : One reel in a bag, six bag in a inner box, six inner boxes in a carton. Unit : mm.



SURFACE MOUNT DEVICE LED

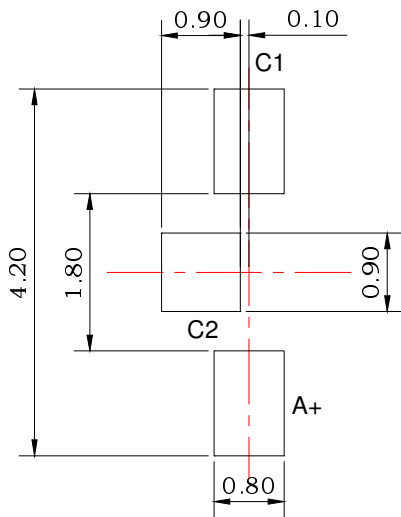
Part No. : SZS115JYLGCT

REV:A / 0

● Cleaning

- * If cleaning is required , use the following solutions for less than 1 minute and less than 40°C .
- * Appropriate chemicals: Ethyl alcohol and isopropyl alcohol.
- * Effect of ultrasonic cleaning on the LED resin body differs depending on such factors as the oscillator output, size of PCB and LED mounting method. The use of ultrasonic cleaning should be enforced at proper output after confirming there is no problem.

● Suggest Soldering Pad Dimensions



Direction of PWB camber
and go to reflow furnace

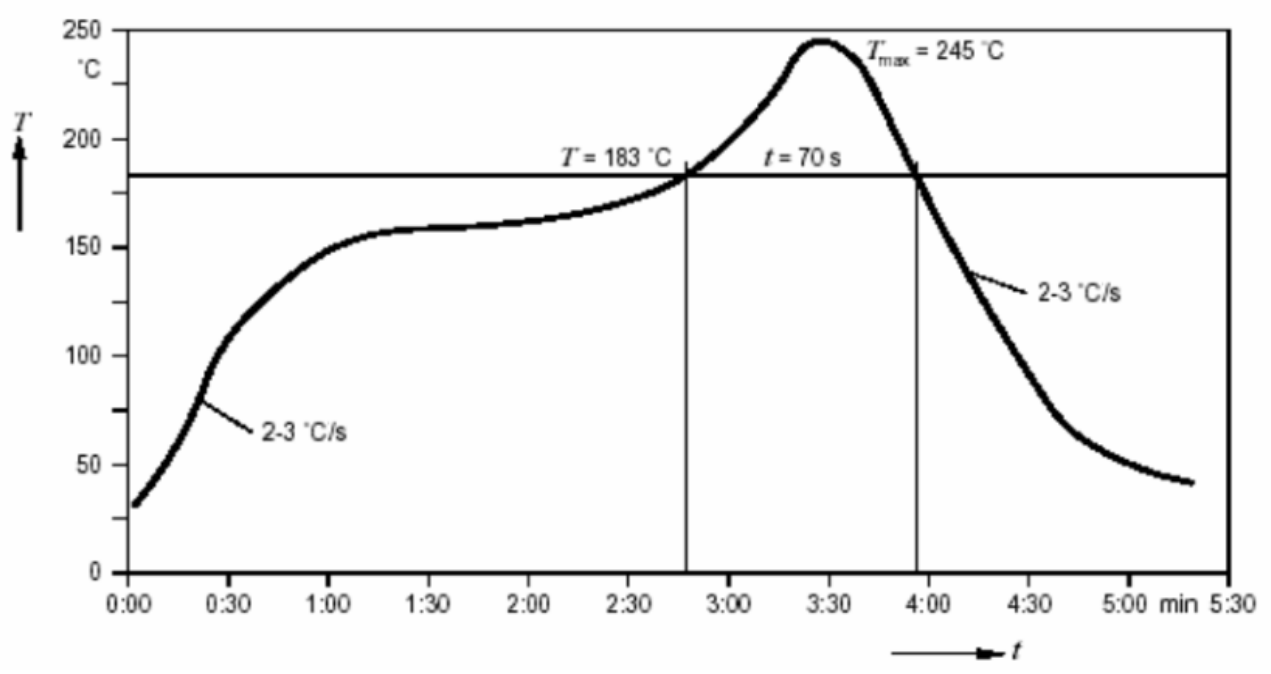


SURFACE MOUNT DEVICE LED

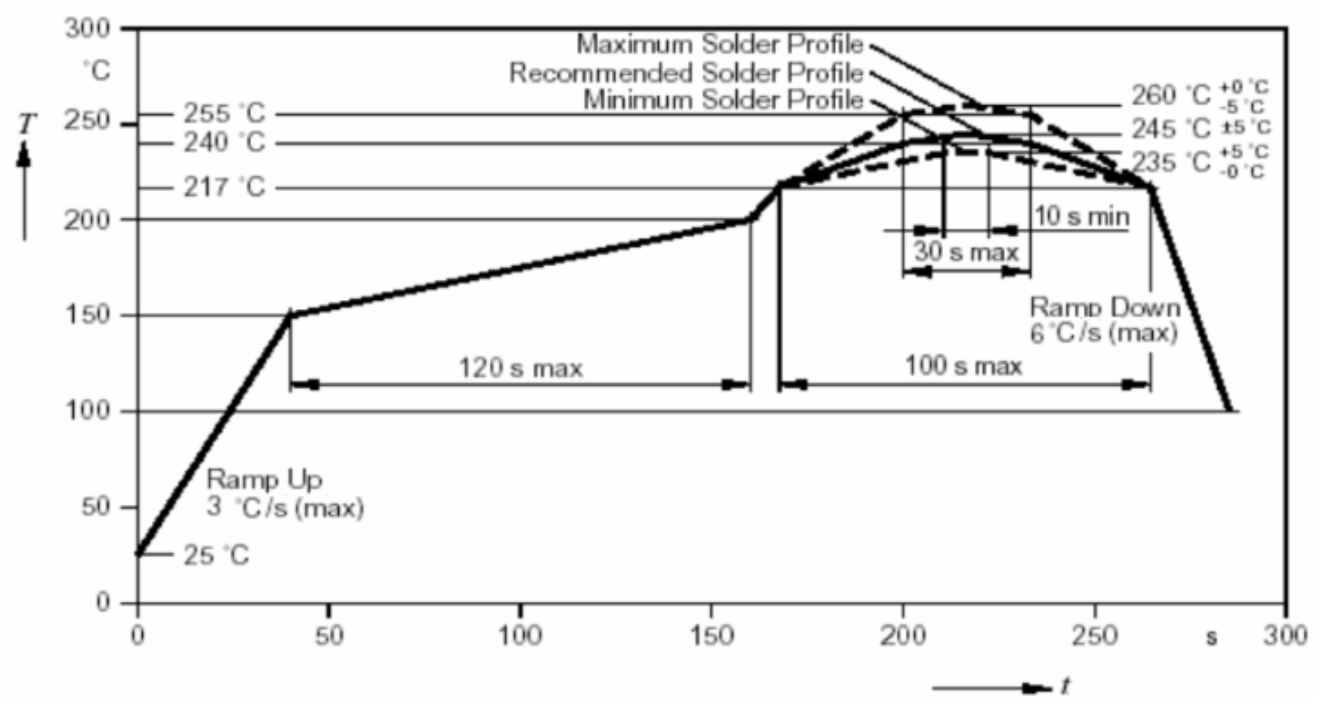
Part No. : SZS115JYLGCT

REV:A / 0

● Suggest Sn/Pb IR Reflow Soldering Profile Condition:



● Suggest Pb-Free IR Reflow Soldering Profile Condition:





SURFACE MOUNT DEVICE LED

Part No. : SZS115JYLGCT

REV:A / 0

● CAUTIONS**1.Application Limitation :**

The LED's described here are intended to be used for ordinary electronic equipment (such as office equipment, communication equipment and household application). Consult PARA's sales in advance for information on application in which exceptional quality and reliability are required, particularly when the failure or malfunction of the LED's may directly jeopardize life or health (such as airplanes, automobiles, traffic control equipment, life support system and safety devices).

2.Storage :

Do not open moisture proof bag before the products are ready to use.

Before opening the package: The LEDs should be kept at 30°C or less and 90%RH or less.

After opening the package: The LED's floor life is 1 year under 30°C or less and 60% RH or less. If unused LEDs remain, it should be stored in moisture proof packages.

If the moisture absorbent material (silica gel) has faded away or the LEDs have exceeded the storage time, baking treatment should be performed using the following conditions.

Baking treatment: 60±5°C for 24 hours.

3.Soldering(Standard Process) :

Do not apply any stress to the lead frame during soldering while the LED is at high temperature.

Recommended soldering condition.

Reflow Soldering :

Pre-heat 120~150°C, 120sec. MAX., Peak temperature : 240°C Max. Soldering time : 10 sec Max.

Soldering Iron : (Not recommended)

Temperature 300°C Max., Soldering time : 3 sec. Max.(one time only), power dissipation of iron : 20W Max. use SN60 solder of solder with silver content and don't to touch LED lens when soldering.

Wave soldering :

Pre-heat 100°C Max, Pre-heat time 60s Max, Solder wave 260°C Max, Soldering time 5 sec. Max. preformed consecutively cooling process is required between 1st and 2nd soldering processes.



SURFACE MOUNT DEVICE LED

Part No. : SZS115JYLGCT

REV:A / 0

4. Lead-Free Soldering

For Reflow Soldering :

- 1、 Pre-Heat Temp : 150-180°C,120sec.Max.
- 2、 Soldering Temp : Temperature Of Soldering Pot Over 230°C,40sec.Max.
- 3、 Peak Temperature : 260°C , 5sec.
- 4、 Reflow Repetition : 2 Times Max.
- 5、 Suggest Solder Paste Formula 93.3 Sn/3.1 Ag/3.1 Bi /0.5 Cu

For Soldering Iron (Not Recommended) :

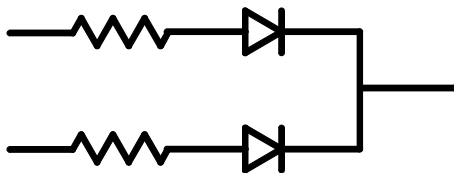
- 1、 Iron Tip Temp : 350°C Max.
- 2、 Soldering Iron : 30w Max.
- 3、 Soldering Time : 3 Sec. Max. One Time.

For Dip Soldering :

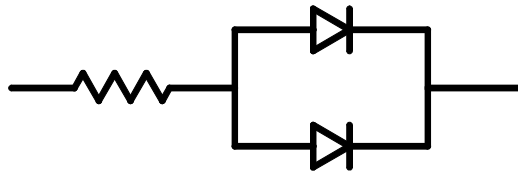
- 1、 Pre-Heat Temp : 150°C Max. 120 Sec. Max.
- 2、 Bath Temp : 265°C Max.
- 3、 Dip Time : 5 Sec. Max.

5. Drive Method

Circuit model A



Circuit model B



(A)Recommended circuit.

(B)The difference of brightness between LED`s could be found due to the Vf-If characteristics of LED.



SURFACE MOUNT DEVICE LED

Part No. : SZS115JYLGCT

REV:A / 0

6. Reliability Test

| Classification | Test Item | Test Condition | Reference Standard |
|--------------------|--|--|---|
| Endurance Test | Operation Life | Ta= Under Room Temperature As Per Data Sheet Maximum Rating *Test Time= 1000HRS (-24HRS,+72HRS)*@20mA. | MIL-STD-750D:1026 (1995) MIL-STD-883D:1005 (1991) JIS C 7021:B-1 (1982) |
| | High Temperature High Humidity Storage | IR-Reflow In-Board, 2 Times Ta= 65±5°C, RH= 90~95% *Test Time= 1000HRS±2HRS | MIL-STD-202F:103B(1980) JIS C 7021:B-11(1982) |
| | High Temperature Storage | Ta= 105±5°C Test Time= 1000HRS (-24HRS,72HRS) | MIL-STD-883D:1008 (1991) JIS C 7021:B-10 (1982) |
| | Low Temperature Storage | Ta= -55±5°C *Test Time=1000HRS (-24HRS,72H RS) | JIS C 7021:B-12 (1982) |
| Environmental Test | Temperature Cycling | 105±5°C -55±5°C 10mins 10mins 100 Cycles | MIL-STD-202F:107D (1980) MIL-STD-750D:1051(1995) MIL-STD-883D:1010 (1991) JIS C 7021:A-4(1982) |
| | Thermal Shock | IR-Reflow In-Board, 2 Times 105±5°C -55°C±5°C 10mins 10mins 100 Cycles | MIL-STD-202F:107D(1980) MIL-STD-750D:1051(1995) MIL-STD-883D:1011 (1991) |
| | Solder Resistance | Tsol= 260 ± 5°C Dwell Time= 10 ± 1sec | MIL-STD-202F:210A(1980) MIL-STD-750D:2031(1995) JIS C 7021:A-1(1982) |
| | Solder ability | Tsol= 235 ± 5°C Immersion time 2±0.5 sec Immersion rate 25±2.5 mm/sec Coverage ≥95% of the dipped surface | MIL-STD-202F:208D(1980) MIL-STD-750D:2026(1995) MIL-STD-883D:2003(1991) IEC 68 Part 2-20 JIS C 7021:A-2(1982) |

7. Others:

The appearance and specifications of the product may be modified for improvement without notice.