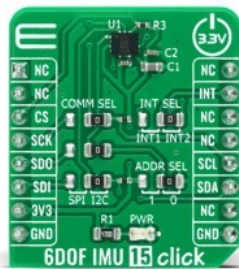


## 6DOF IMU 15 Click



PID: MIKROE-4330

6DOF IMU 15 Click is a compact add-on board that contains a 6-axis MEMS motion tracking device combining a 3-axis gyroscope and a 3-axis accelerometer. This board features the ASM330LHH, automotive 6-axis MEMS motion tracking device, from STMicroelectronics. It has a configurable host interface that supports both I2C and SPI serial communication, features a 3 kB FIFO and a programmable interrupt with ultra low-power event-detection support to minimize system power consumption. This Click board™ is an excellent choice for applications like gesture recognition, activity classification, dead reckoning, pedometers, Telematics, eTolling, anti-theft systems, and more.

6DOF IMU 15 Click is supported by a mikroSDK compliant library, which includes functions that simplify software development. This Click board™ comes as a fully tested product, ready to be used on a system equipped with the mikroBUS™ socket

### How does it work?

6DOF IMU 15 Click is based on the ASM330LHH, a system-in-package featuring a high-performance 3-axis digital accelerometer and 3-axis digital gyroscope from STMicroelectronics. It features a 3 kB FIFO that can lower the traffic on the serial bus interface, and reduce power consumption by allowing the system processor to burst read sensor data, and then go into a low-power mode. It also features embedded compensation for high stability over temperature (up to +105 °C). The ASM330LHH has a configurable full-scale acceleration range of up to ±16 g and a wide angular rate range, from ±125 dps up to ±4000 dps, that enables its usage in a broad range of applications.

Mikroe produces entire development toolchains for all major microcontroller architectures.

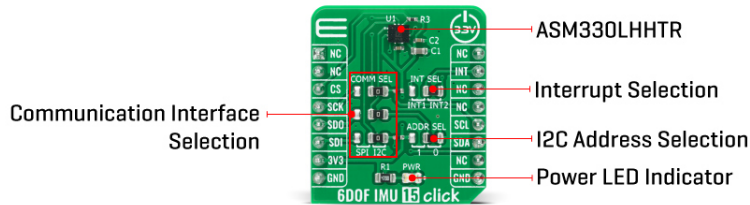
Committed to excellency, we are dedicated to helping engineers bring the project development up to speed and achieve outstanding results.



ISO 27001: 2013 certification of informational security management system.  
 ISO 14001: 2015 certification of environmental management system.  
 OHSAS 18001: 2008 certification of occupational health and safety management system.



ISO 9001: 2015 certification of quality management system (QMS).



The ASM330LHH has a programmable interrupt system that can generate an interrupt signal two available pins. One of these two interrupt pins can be selected using the INT SEL jumper (JP4), which is routed to the INT pin of the mikroBUS™ socket. The event-detection smart programmable interrupts enable efficient and reliable motion-activated functions, implementing hardware recognition of free-fall events, 6D orientation, activity or inactivity, and wakeup events.

6DOF IMU 15 Click provides the possibility of using both I2C and SPI interfaces with a maximum frequency of 400kHz for I2C and 10MHz for SPI communication. The selection can be done by positioning SMD jumpers labeled as COMM SEL to an appropriate position. Note that all the jumpers must be placed to the same side, or else the Click board™ may become unresponsive. While the I2C interface is selected, the ASM330LHH allows the choice of the least significant bit (LSB) of its I2C slave address. This can be done by using the SMD jumper labeled as ADDR SEL.

A FIFO buffer helps to further reduce the processing load, offering temporary storage for the output data. The ASM330LHH contains a FIFO of size 3 kbytes that is accessible via the serial interface. The FIFO configuration register determines which data is written into the FIFO. Possible choices include gyro data, accelerometer data, Timestamp, and temperature readings.

This Click Board™ is designed to be operated only with a 3.3V logic level. A proper logic voltage level conversion should be performed before the Click board™ is used with MCUs with different logic levels.

## Specifications

Type	Acceleration,Gyroscope,Motion
Applications	Gesture recognition, activity classification, dead reckoning, pedometers, Telematics, eTolling, anti-theft systems, and more.
On-board modules	6DOF IMU 15 Click is based on the ASM330LHH, a system-in-package featuring a high-performance 3-axis digital accelerometer and 3-axis digital gyroscope from STMicroelectronics
Key Features	Both I2C and SPI serial communication, features a 3 kB FIFO and a programmable

Mikroe produces entire development toolchains for all major microcontroller architectures.

Committed to excellency, we are dedicated to helping engineers bring the project development up to speed and achieve outstanding results.



ISO 27001: 2013 certification of informational security management system.  
 ISO 14001: 2015 certification of environmental management system.  
 OHSAS 18001: 2008 certification of occupational health and safety management system.




ISO 9001: 2015 certification of quality management system (QMS).

	interrupt with ultra low-power event-detection support to minimize system power consumption power consumption, and more.
Interface	I2C,SPI
Feature	No ClickID
Compatibility	mikroBUS™
Click board size	S (28.6 x 25.4 mm)
Input Voltage	3.3V

## Pinout diagram

This table shows how the pinout on 6DOF IMU 15 Click corresponds to the pinout on the mikroBUS™ socket (the latter shown in the two middle columns).

Notes	Pin					Pin	Notes
	NC	1	AN	PWM	16	NC	
	NC	2	RST	INT	15	<b>INT</b>	Interrupt
SPI Chip Select	<b>CS</b>	3	CS	RX	14	NC	
SPI Clock	<b>SCK</b>	4	SCK	TX	13	NC	
SPI Data OUT	<b>SDO</b>	5	MISO	SCL	12	<b>SCL</b>	I2C Clock
SPI Data IN	<b>SDI</b>	6	MOSI	SDA	11	<b>SDA</b>	I2C Data
Power Supply	<b>3.3V</b>	7	3.3V	5V	10	NC	
Ground	<b>GND</b>	8	GND	GND	9	<b>GND</b>	Ground

## Onboard settings and indicators

Label	Name	Default	Description
LD1	PWR	-	Power LED Indicator
JP1-JP3	COMM SEL	Right	Communication interface selection: left position SPI, right position I2C
JP4	INT SEL	Right	Interrupt pin selection: left position INT 1, right position INT 2
JP5	ADDR SEL	Right	I2C Address Selection: Left position 0, Right position 1

## 6DOF IMU 15 Click electrical specifications

Description	Min	Typ	Max	Unit
Supply Voltage	2.0	3.3	3.6	V
I2C Clock Frequency	-	-	400	kHz
SPI Clock Frequency	-	-	10	kHz
Linear acceleration measurement range	±2	-	±16	g
Angular rate measurement range	±125	-	±40003 0	dps

Mikroe produces entire development toolchains for all major microcontroller architectures.

Committed to excellency, we are dedicated to helping engineers bring the project development up to speed and achieve outstanding results.



ISO 27001: 2013 certification of informational security management system.  
 ISO 14001: 2015 certification of environmental management system.  
 OHSAS 18001: 2008 certification of occupational health and safety management system.



ISO 9001: 2015 certification of quality management system (QMS).

Operating Temperature Range	-40	-	+105	°C
-----------------------------	-----	---	------	----

## Software Support

We provide a library for the 6DOF IMU 15 Click on our [LibStock](#) page, as well as a demo application (example), developed using MikroElektronika [compilers](#). The demo can run on all the main MikroElektronika [development boards](#).

## Library Description

The library covers all the necessary functions that enables the usage of the 6DOF IMU 15 Click board. It initializes and defines the I2C bus driver and drivers that offer a plethora of settings. The library also offers functions that allow reading of accelerometer, gyroscope and temperature, as well as generic read and write function that offer reading( and writing) of different lengths of data.

Key functions:

- void c6dofimu15\_acceleration\_rate ( float \*x\_acel\_rte, float \*y\_acel\_rte, float \*z\_acel\_rte ); - Function is used to calculate acceleration rate in milligravities.
- void c6dofimu15\_angular\_rate ( float \*x\_ang\_rte, float \*y\_ang\_rte, float \*z\_ang\_rte ); - Function is used to calculate angular rate in milidegrees per second.
- float c6dofimu15\_read\_temp\_out ( ); - Function is used to read temperture in degree Centigrade.

## Examples description

The application is composed of three sections :

- System Initialization - Initializes SPI and I2C modules, LOG and GPIO structures, sets INT pin as input.
- Application Initialization - Initalizes SPI and I2C drivers, performs safety check, applies default setup and writes an log.
- Application Task - Demonstrates use of 6DOF IMU 6 click board by reading angular rate in milidegrees per second, and linear acceleration rate in milligravities and displaying data via USART terminal.

The full application code, and ready to use projects can be found on our [LibStock](#) page.

Other mikroE Libraries used in the example:

- I2C
- SPI
- UART
- Conversions

## Additional notes and informations

Depending on the development board you are using, you may need [USB UART click](#), [USB UART 2 click](#) or [RS232 click](#) to connect to your PC, for development systems with no UART to USB interface available on the board. The terminal available in all MikroElektronika [compilers](#), or any other terminal application of your choice, can be used to read the message.

Mikroe produces entire development toolchains for all major microcontroller architectures.

Committed to excellency, we are dedicated to helping engineers bring the project development up to speed and achieve outstanding results.



ISO 27001: 2013 certification of informational security management system.  
 ISO 14001: 2015 certification of environmental management system.  
 OHSAS 18001: 2008 certification of occupational health and safety management system.



ISO 9001: 2015 certification of quality management system (QMS).

## mikroSDK

This Click board™ is supported with [mikroSDK](#) - MikroElektronika Software Development Kit. To ensure proper operation of mikroSDK compliant Click board™ demo applications, mikroSDK should be downloaded from the [LibStock](#) and installed for the compiler you are using.

For more information about mikroSDK, visit the [official page](#).

## Resources

[mikroBUS™](#)

[mikroSDK](#)

[Click board™ Catalog](#)

[Click boards™](#)

## Downloads

[6DOF IMU 15 click 2D and 3D files](#)

[ASM330LHH datasheet](#)

[6DOF IMU 15 click example on Libstock](#)

[6DOF IMU 15 click schematic](#)

Mikroe produces entire development toolchains for all major microcontroller architectures.

Committed to excellency, we are dedicated to helping engineers bring the project development up to speed and achieve outstanding results.



ISO 27001: 2013 certification of informational security management system.  
ISO 14001: 2015 certification of environmental management system.  
OHSAS 18001: 2008 certification of occupational health and safety management system.



ISO 9001: 2015 certification of quality management system (QMS).