

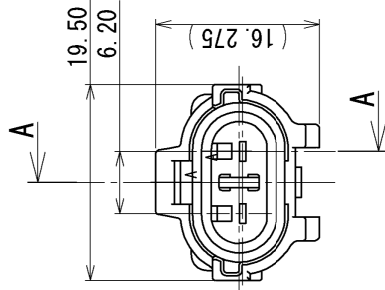
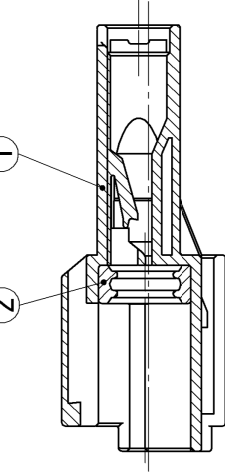
SUB ASSEMBLY PART NO. AND CH. CODE		PART NO. AND CH. CODE	MATERIAL	COLOR	QTY.
7282-8781-40 ETC.		① SEE TABLE 2	PBT	SEE TABLE 2	1
		② 7137-1550-80	SILICONE RUBBER	RED-IRON	1

SUB ASSEMBLY PART NO. AND CH. CODE		PART NO. AND CH. CODE	COLOR
7282-8781		7182-8781	NATURAL
7282-8781-30		7182-8781-30	BLACK
7282-8781-40		7182-8781-40	DARK GRAY

B

注記

1. かん合相手品番 : 7183-8781-40 ETC.
2. 適用材料品番 : 7157-7813-80
3. 適用代加品番 : 7134-4894-30
4. 適用端子品番 : 7114-1471、7114-1471-08、7114-1472、7114-1472-08



NOTES

1. MATING PART NO. : 7183-8781-40 ETC.
2. APPLICABLE REAR HOLDER PART NO. : 7157-7813-80
3. APPLICABLE REAR COVER PART NO. : 7134-4894-30
4. APPLICABLE TERMINAL NO. : 7114-1471、7114-1471-08、7114-1472、7114-1472-08

SEC. A-A

GENERAL TOLERANCE											
	10 MAX	50 MAX	100 MAX	250 MAX	250 OVR	R5 MAX	R10 MAX	R20 MAX	R20 OVR	ANGLE	ECCENT
A	±0.15	±0.2	±0.3	±0.5	±0.75	±0.2	±0.3	±0.5	±2.5	±3°	0.1
B	±0.2	±0.3	±0.55	±0.95	±1.4	±0.2	±0.3	±0.5	±2.5	±3°	0.1
C	±0.3	±0.5	±0.8	±1.4	±2					±3°	0.15

LET	DATE	CHANGED PART NAME	REVISION RECORD	NO.	CHKD	CUSTOMER PART NO.	CUSTOMER DWG NO.	MATL. SPEC.	SEE TABLE 1	TREAT. & FIN.
△	10/11/15	C10-ZA94	R. E							
	03/02/04	NEW	T. K							
NAME △ SWP-TYPE SEALED HOUSING										
SUB ASSEMBLY 2P MALE										
PART NO. 7282-8781-40 ETC.										
CH. CODE										
DWG NO. 7282-8781-40:R										
SET DWG NO.										
YAZAKI CORPORATION										

B

A