

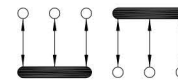
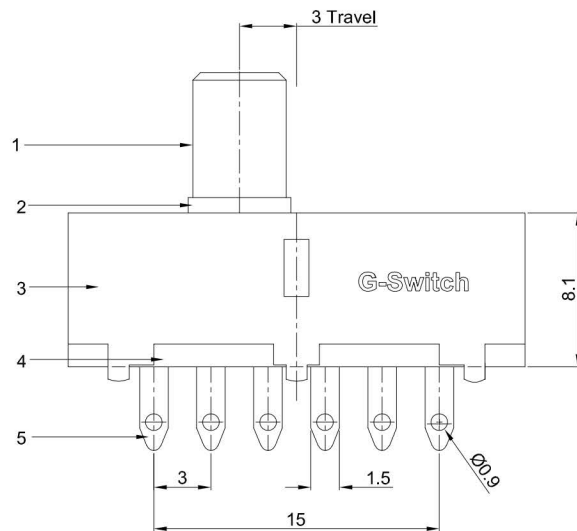
SS-23F20-AC7-NI

SS: Straight shank

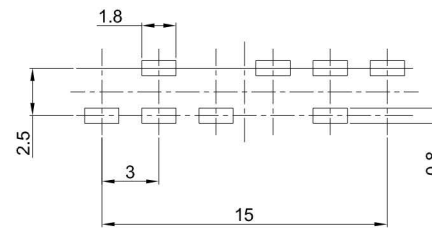
NI: Smooth aluminum tube

G-Switch P/N

AC7: Round handle



CIRCUIT DIAGRAM



RECOMMENDED PCB LAYOUT
TOLERANCE: ±0.05

G-Switch Specification:

1. Operating temperature range: -40°C ~ +85°C
2. Rating: 0.5A, 50V DC
3. Insulation resistance: 100MΩ min, 100V DC
4. Dielectric strength: 500V AC for 1 min
5. Contact resistance: 30mΩ max.
6. Terminals arrangement: 2P3T
7. Travel: 3.0±0.1mm
8. Switch lifetime: 10,000 Cycles

NO.	PART NAME	MATERIAL	REMARK
8	STEEL BALL	STEEL	NATURAL
7	SPRING	STEEL WIRE	NATURAL
6	CONTACT	BRASS STRIP	Ag PLATED
5	TERMINAL	BRASS STRIP	Ag PLATED
4	BASE	PHENOLIC RESIN	NATURAL
3	FRAME	STEEL STRIP	NI PLATED
2	KNOB	POM	BLACK
1	SLEEVE	ALUMINIUM	NATURAL



SCALE: 1:1	UNIT: mm	Title: Vertical Slide Switch DIP 24×8×H8.1mm			
SIZE: A4		Molde Code: SS-23F20-AC7-NI			
Unless otherwise General Tolerance:		DRAWN	CHECKED	APPROVED	DATE
X	±0.40	Jiang	Xia	Chen	2023.06.30
X.x	±0.30				
X.xx	±0.20				
X°	±5°				
X.x°	±3°				



REV: A0 SHEET: 1/1