

WAFER-RK3568

3.5" SBC supports RK3568 processor motherboard

3.5" SBC with RK3568; 2/4GB LPDDR4/4X; 16/32GB eMMC; 2 x 1GbE RJ45; 2 x (RS232+RS485);

2 x USB 3.0 Type A; 3 x USB 2.0 HOST; HDMI2.0; MIPI DSI, Edp and MIPI CSI; M.2 Slot;

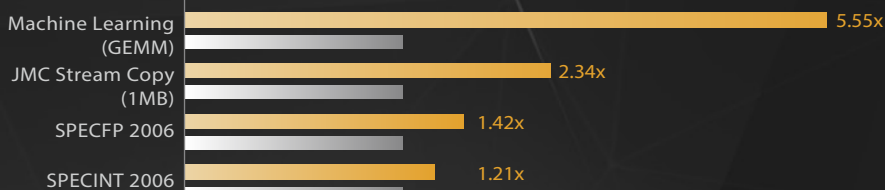
SD Card Slot; DC 12V; Debian10/Android12; RoHS

Provide AI demo kit

CPU ▶ 4-Core 4xA55, Frequency 2.0GHz

Cortex-A55
performance
relative to
Cortex-A53

- Cortex-A55
- Cortex-A53



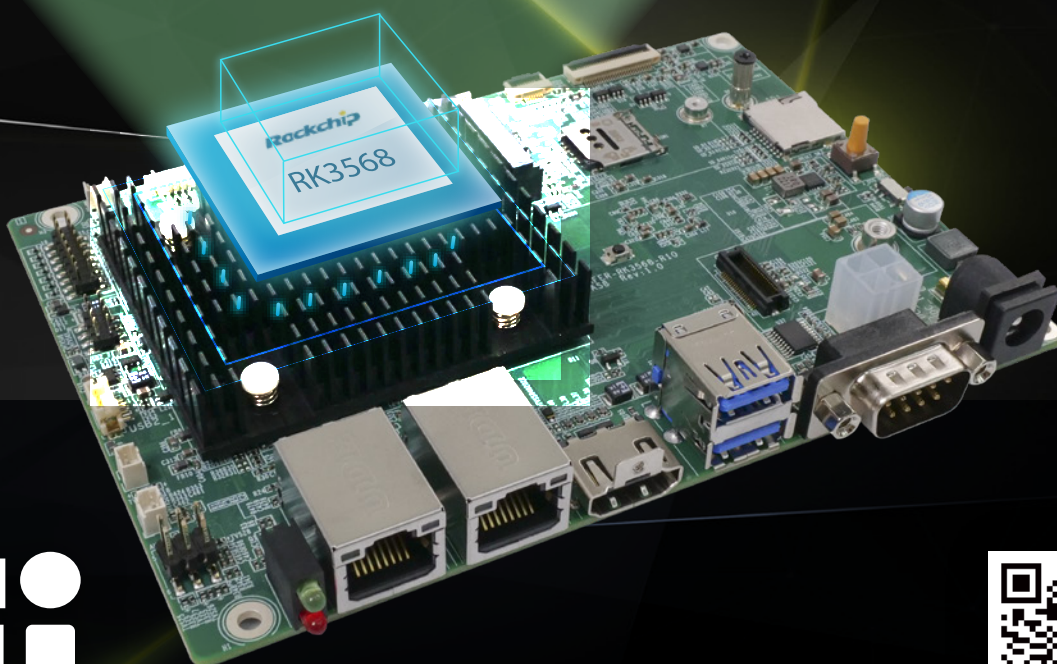
GPU ▶ Mali-G52

Mali-G52
performance
relative to
Mali-G51



NPU ▶ 0.8 Tops Support int8/int16/FP16/BFP16

Support framework such as

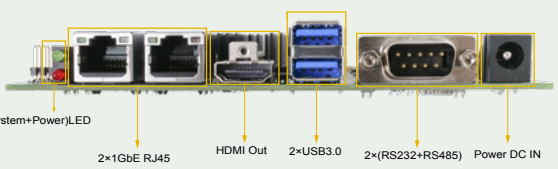
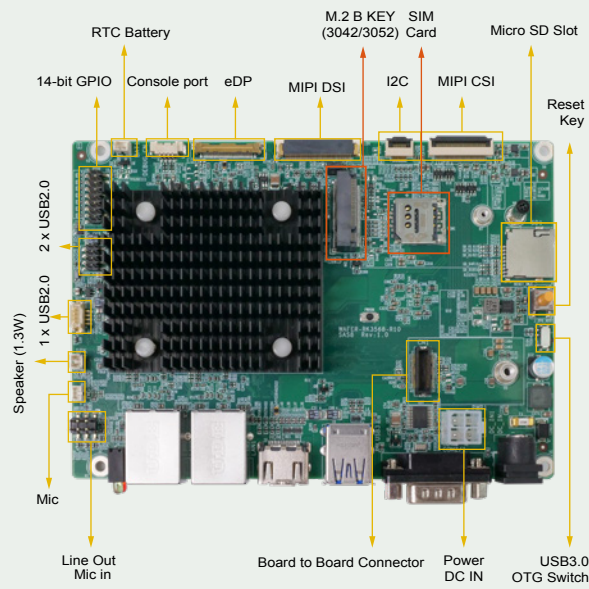
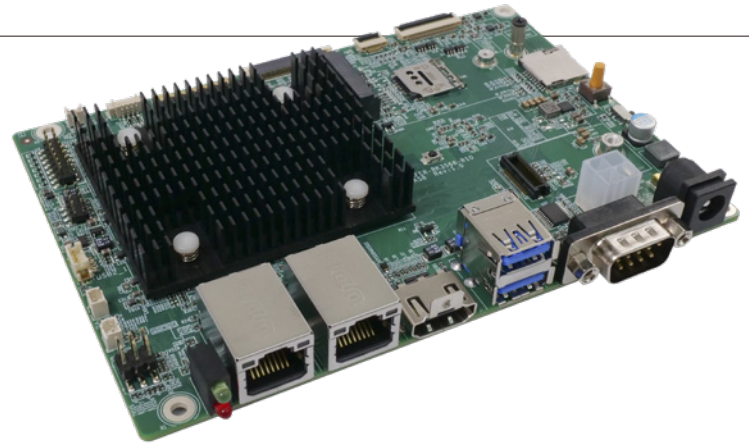


www.ieiworld.com



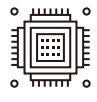
WAFER-RK3568

3.5" SBC supports RK3568 with 2/4GB LPDDR4/X, 16/32GB eMMC, Triple display with HDMI, MIPI, eDP, USB3.0x2, Built-In USB2.0x3, ROHS compliant



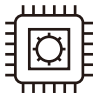
Support Rockchip RK3568

Quad A55, Up to 2.0GHz, 20% more efficient than A53
Release super performance, can handle multiple tasks at the same time



Support GPU & VPN & NPU

RK3568 integrates dual-core GPU, high-performance VPU and high-performance NPU.



Easy to use model transformation Etool RKNN-Toolkit

Support Caffe / Tensor Flow/TF-Lite / ONNX/PyTorch /Keras / Darknet
One-click transformation of mainstream architectural models



Built-in Motorcomm YT8521S GbE Controllers

two RJ-45 Ethernet ports on the I/O panel through Motorcomm YT8521S GbE controllers



Internal Expansion

The motherboard has one board to board connector and one M.2 B Key (3042/3052). board to board connector supports WI-FI and Bluetooth expansion(only IEI iwB series), and M.2 B Key (with SIM card holder) supports 4G/5G modules.

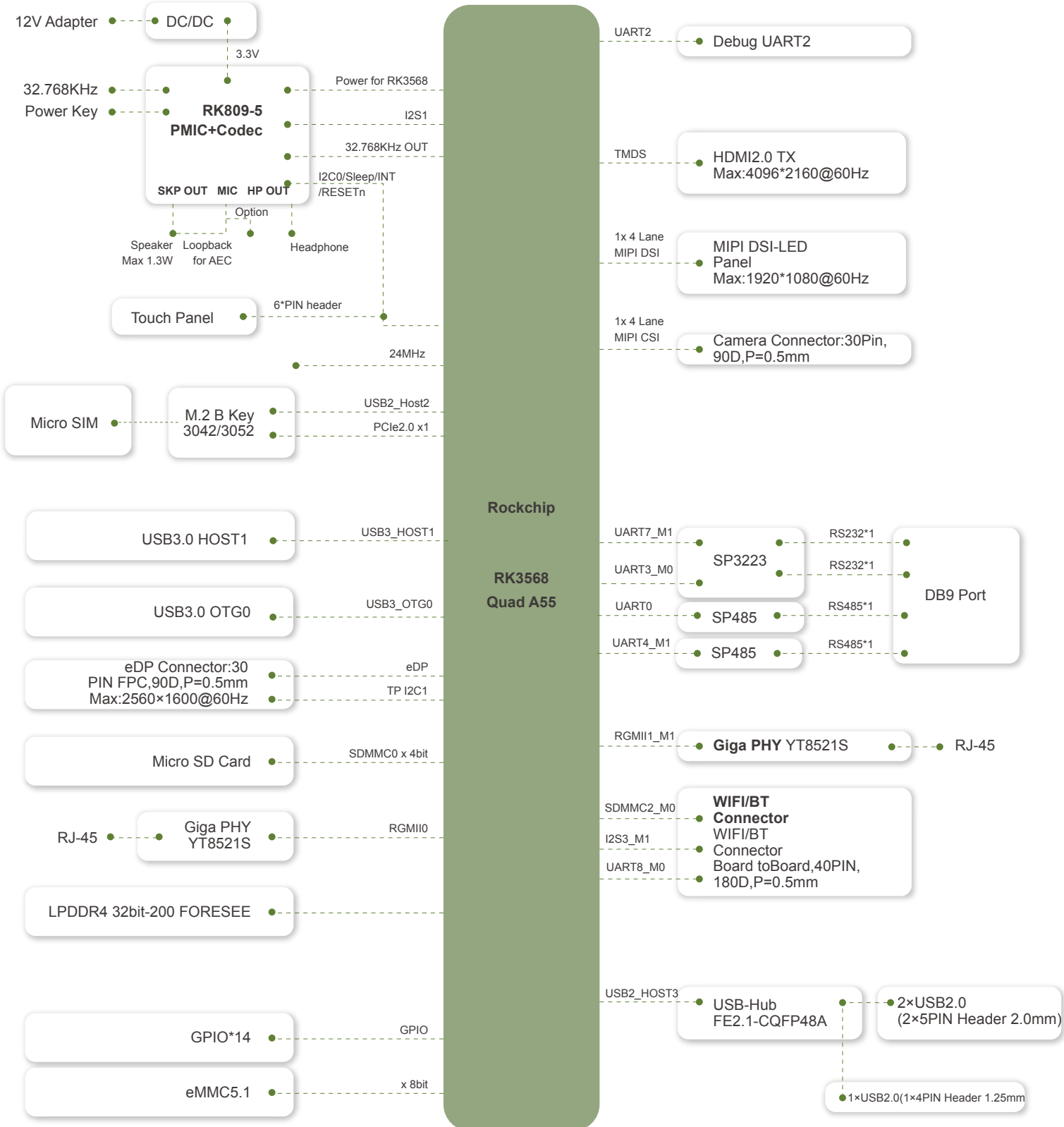


Display capability

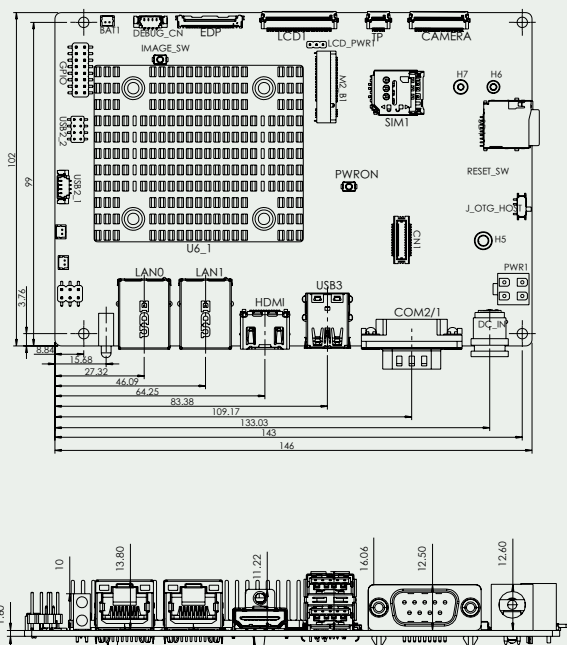
Support HDMI/eDP/MIPI DSI Triple Different Display



WAFER-RK3568 Block Diagram



Dimensions



Optional accessories



Specifications

Model Name		WAFER-RK3568
Dimension	Dimensions (WxHxD)(mm)	146mm x102mm
Motherboard	CPU	Rockchip RK3568 (Quad-core Cortex-A55 up to 2.0Ghz)
	Syetem Memory	2/4GB LPDDR4/4X, up to 8GB (2GB SKUs only support Linux OS)
	Flash	16/32GB eMMC NAND Flash
Storage	SD Card	1 x Micro SD Slot
	COM Port	2 x RS232 and 2 x RS485 (by 1 x DB9)
I/O Interfaces	GPIO	14-bit (7 in / 7 out, 2 x 8 pin header)
	Ethernet	2 x 1GbE RJ45 By YT8521
	USB3.0	2 x USB 3.0 Type A (1x OTG, 1x HOST)
	USB 2.0	3 x USB 2.0 HOST (1 x 4 pin header, 2 x 4pin header)
	Display	1 x HDMI2.0 Type A , Up to 4K 1 x MIPI DSI 4 Lanes (40Pin 0.5mm FPC 90 °) 1 x eDP1.3 (30Pin 0.5mm FPC 90 °)
	Camera	1 x MIPI CSI 4 Lanes (30pin 0.5mm FPC)
	PC Connector	1 x I ² C connector for touch panel (8pin, 90 ° , P=0.5mm)
	Console port	1 x Console port
	M.2	1 x 3042/52 B-key (PCIe Gen2 x1, USB2.0 1 x On-board SIM card socket (hinge type) for M.2 B key 1 x board to board connector (Only supports IEI IWB series wireless modules)
	Audio&Button	Audio
Button		1 x Reset Key
Power	LED Indicator	1 x Power Led 1 x Working status Led
	Power input	12V DC Jack (Colay 2-pin terminal) 12V DC Input (2 x 2 pin,P=4.2)
Reliability	Operating Temperature	0 C ~ 60 C
	Storage Temperature	-20 C ~ 70 C
	Humidity	10% ~ 90%,no-condensing
	Safety/EMC	EMC Class A
OS	Supported OS	Android 12.0 , Linux Debian 10 (kernel 4.19)
	Watchdog Timer	YES

Packing List

1 x WAFER-RK3568 single board	1 x QIG
-------------------------------	---------

Ordering Information

Part NO	Description
WAFER-RK3568-R10	3.5" SBC with RK3568;4GB LPDDR4/4X;32GB eMMC;2x 1GbE RJ45;2x(RS232+RS485);2x USB 3.0 Type A;3x USB 2.0 HOST;HDMI2.0;MIPI DSI\ Edp and MIPI CSI;M.2 Slot;SD Card Slot;DC 12V;Debian10;RoHS
WAFER-RK3568-2/16GB-R10	3.5" SBC with RK3568 , 2GB LPDDR4/4X, 16GB eMMC, 2x 1GbE RJ45 , 2x(RS232+RS485), 2x USB 3.0 Type A, 3x USB 2.0 HOST, HDMI2.0, MIPI DSI\ Edp and MIPI CSI, M.2 Slot, SD Card Slot, DC 12V, Debian10, RoHS
WAFER-RK3568-A-R10	3.5" SBC with RK3568 , 4GB LPDDR4/4X, 32GB eMMC, 2x 1GbE RJ45 , 2x(RS232+RS485), 2x USB 3.0 Type A, 3x USB 2.0 HOST, HDMI2.0, MIPI DSI\ Edp and MIPI CSI, M.2 Slot, SD Card Slot, DC 12V, Android12, RoHS
63040-010060-200-RS	Adapter Power;FSP060-DHAN3;Vin:90~264VAC;60W;Dim:62.0*110*31.5mm; Cable=1500mm;Vout:12VDC;Φ2.5/Φ5.5
32001-008600-200-RS	USB CABLE; 210mm; 28AWG; (A)USB A TYPE 4PIN FEMALE *2; (B)DU PONT 2*4P P=2.0 FEMALE
IWB-AP6275SDSR-EA-R10	WiFi+Bluetooth Module,AP6275SDSR,2T2R,802.11 a/b/g/n/ac/ax Wi-Fi + BT 5.3; with external WIFI 6 antenna, FCC/CE/TELEC/NCC

Mouser Electronics

Authorized Distributor

Click to View Pricing, Inventory, Delivery & Lifecycle Information:

[IEI:](#)

[WAFER-RK3568-A-R10](#) [WAFER-RK3568-2/16GB-R10](#)