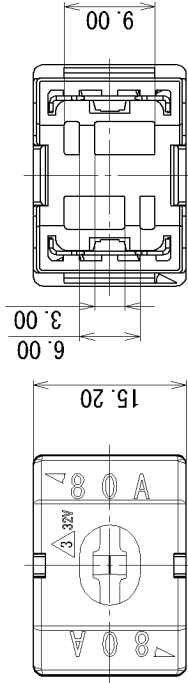
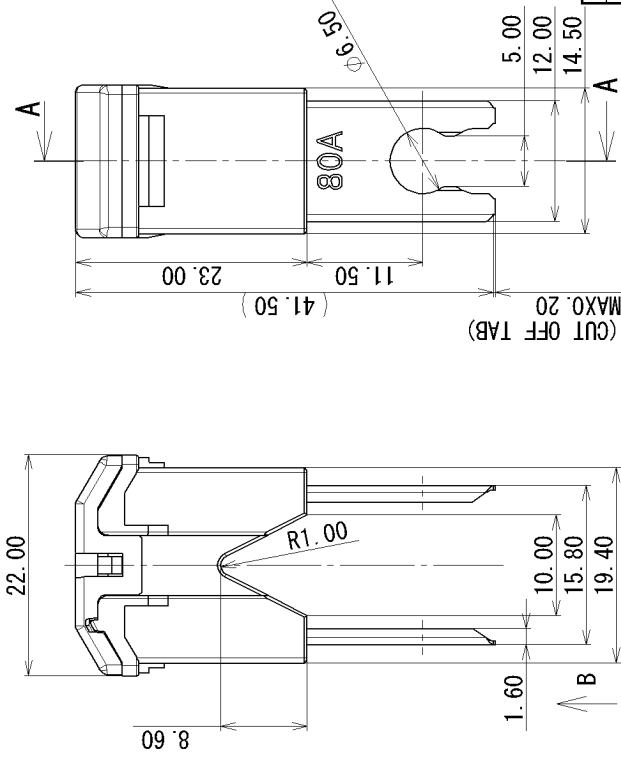


ASSEMBLY PART NO. AND CH. CODE	NO.	PART NO. AND CH. CODE	PART NAME	MATERIAL	COLOR	QTY.
△ 7327-3116. A	①	7157-8043	△ HIGH CURRENT FUSE LINKS (大電流ヒューズ) COVER 80A	PES	—	1
	②	7122-3623-30	△ HIGH CURRENT FUSE LINKS (大電流ヒューズ) B ₁ -TYPE HOUSING 80A	PA6T-G	BLACK	1
	③	7227-6052	△ HIGH CURRENT FUSE LINKS (大電流ヒューズ) B ₁ -TYPE FUSE ELEMENT SUB ASSEMBLY 80A	COPPER ALLOY	—	1



VIEW B



△ 注記

1. 適用ボルト: M6
2. 加^{*}の保持力は、49N以上とする。
3. 端子の保持力は、117.6N以上とする。

△ NOTES

1. APPLICABLE BOLT: M6
2. COVER RETENTION FORCE: 49 N OR OVER
3. TERMINAL RETENTION FORCE: 117.6 N OR OVER

SEC. A-A

GENERAL TOLERANCE											
	10 MAX	50 MAX	100 MAX	250 MAX	250 OVR	R5 MAX	R10 MAX	R20 MAX	R20 OVR	ANGLE	ECCENT
A	±0.15	±0.2	±0.3	±0.5	±0.75					±3°	0.1
B	±0.2	±0.3	±0.55	±0.95	±1.4					±3°	0.1
C	±0.3	±0.5	±0.8	±1.4	±2					±3°	0.15

LET	DATE	REVISION RECORD	NO.	CHKD	M. C	CUSTOMER	MATL. SPEC.	SEE TABLE	TREAT.
△	2013/04/23	ADDITION OF RATED VOLTAGE ETC.	A		C13-Z186	M. C			
△	2010/09/27	SEPARATED DRAWING FROM 7327-3115-R			C10-Y129	H. T			
△	1992/05/13	CH. TABLE & NOTES			C92-6474	T. S			
△	1990/03/27	NEW			C90-L329	M. T			
GENERAL TOLERANCE									
A	10MAX	50MAX	100MAX	250MAX	250OVR	ANGLE	ECCENT		
A	±0.15	±0.2	±0.3	±0.5	±0.75	±30'	0.1		
B	±0.2	±0.3	±0.55	±0.95	±1.4	±30'	0.1		
C	±0.3	±0.5	±0.8	±1.4	±2	±30'	0.15		
SPECIFIED									
CUSTOMER PART NO.									
CUSTOMER DWG NO.									
OFFICE									
VENDOR									
VENDOR NO.									
DWG TYPE									
DWG SOURCE									
DWG DATE									
UNIT									
SQ. ANGLE									
PART NO. CH. CODE									
DWG NO.									
DRAWN									
DESIGN									
CHECKED									
APPROVED									
S. ONODA									
M. TOTSUKA									
M. CARDZO									
1990/02/08									
2013/04/23									
HIGH CURRENT FUSE LINKS (大電流ヒューズ) B ₁ -TYPE 80A									
7327-3116-R									
7327-3116. A									
YAZAKI CORPORATION									