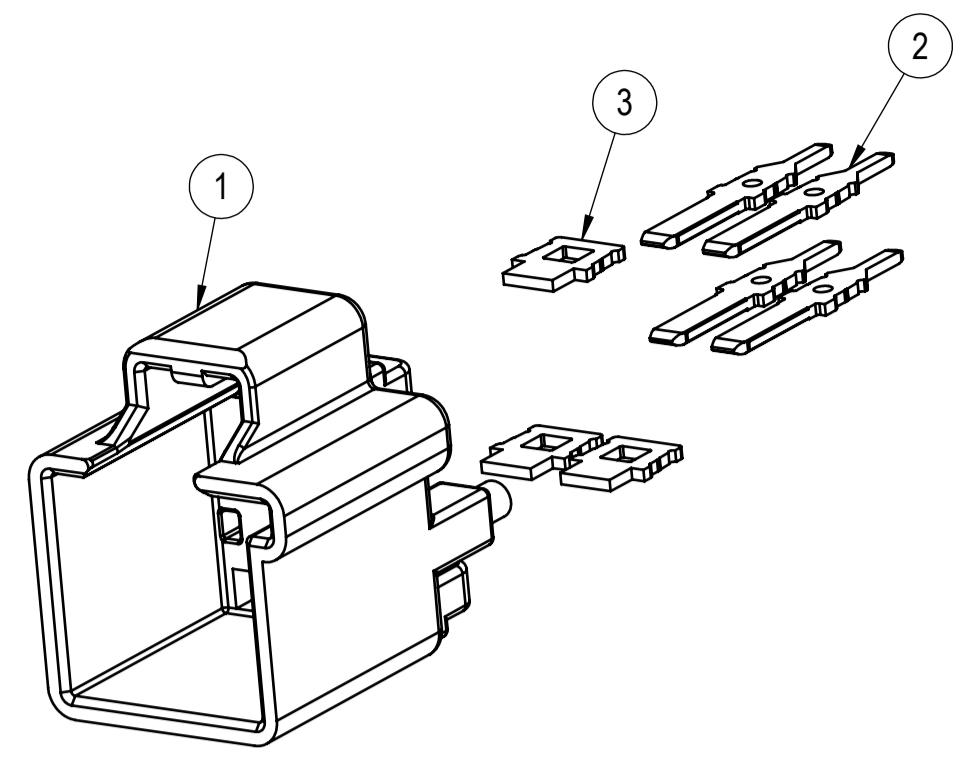
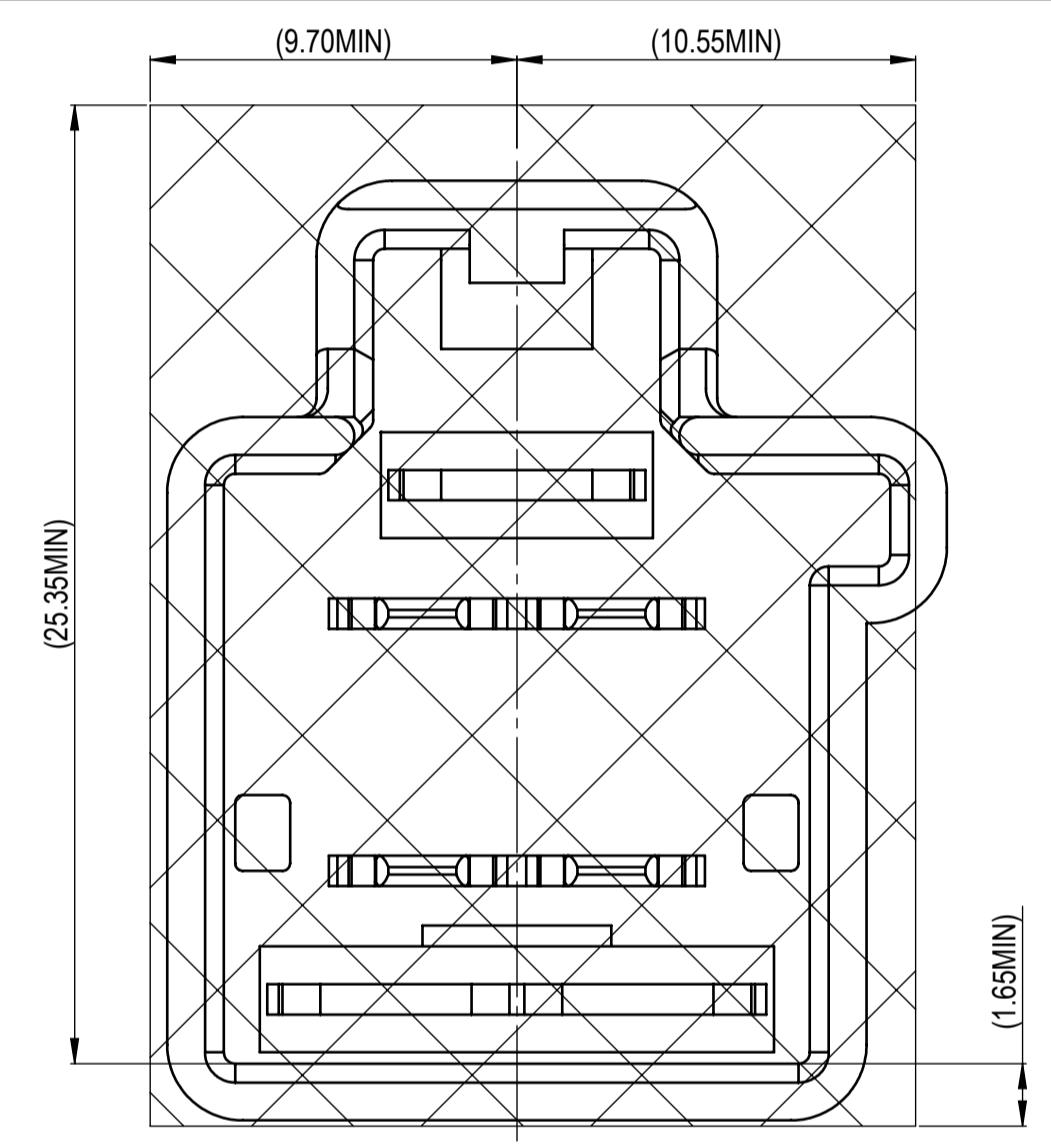


FOOT PRINT

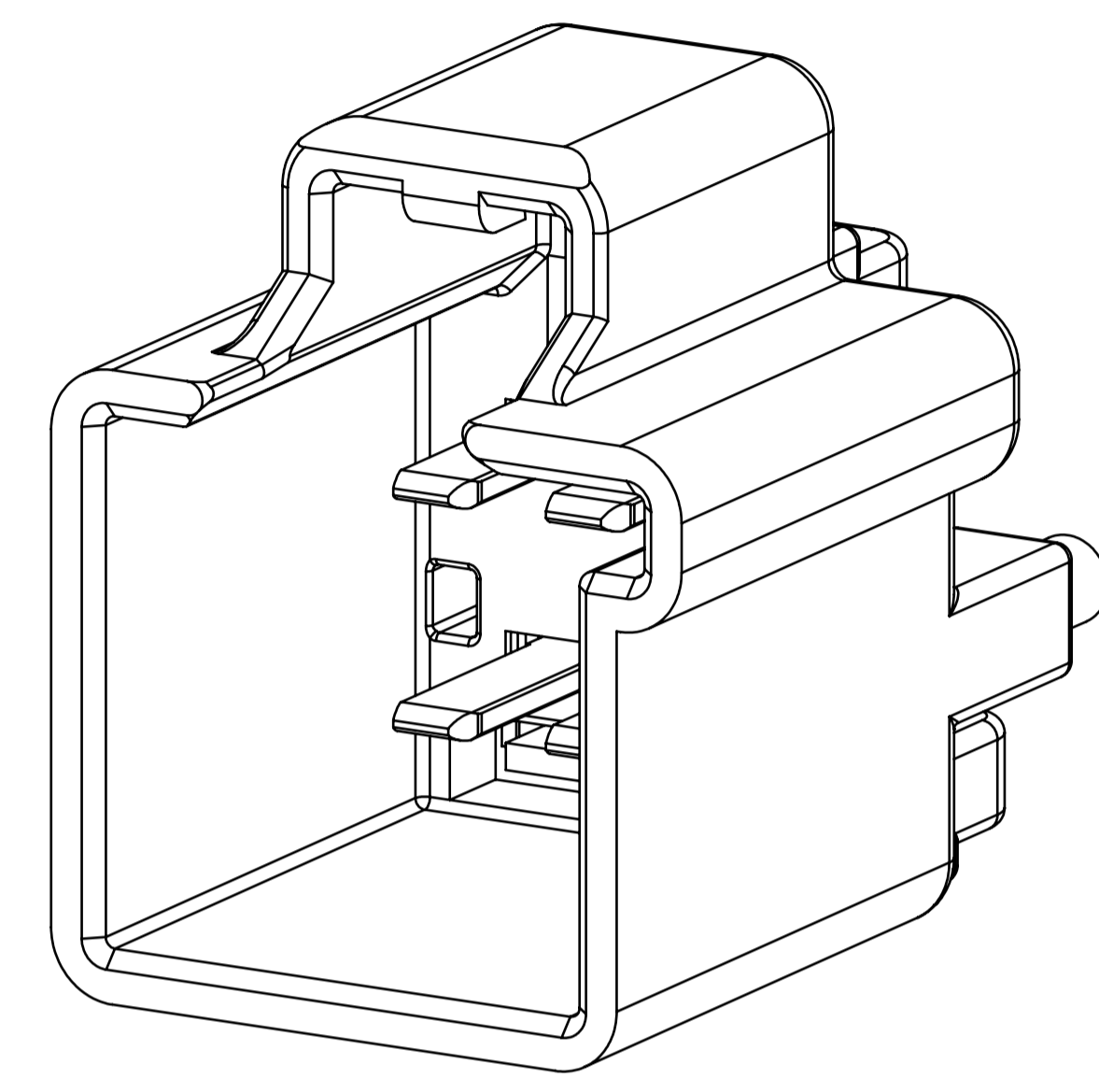
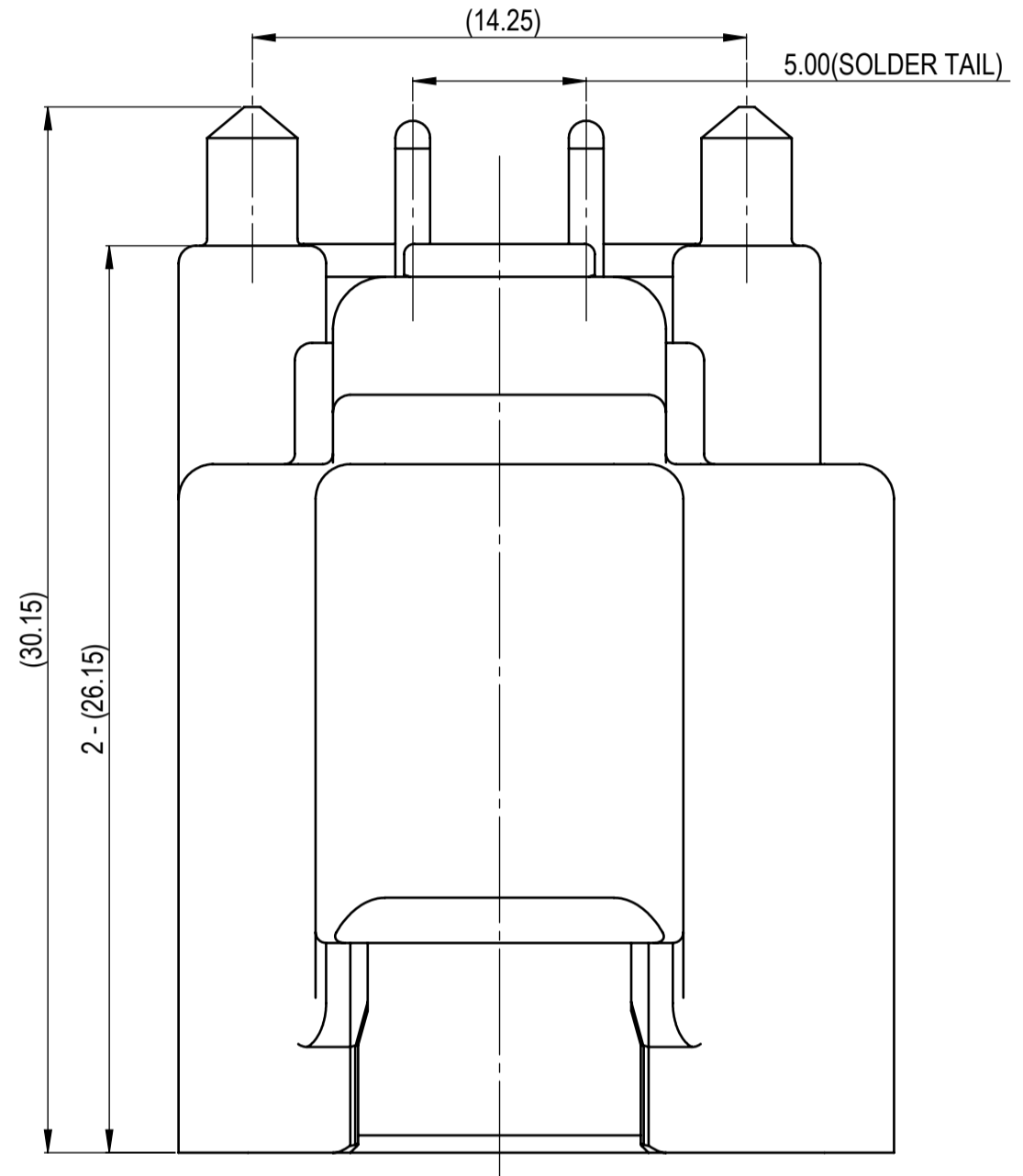


EXPLODED VIEW (2/1)

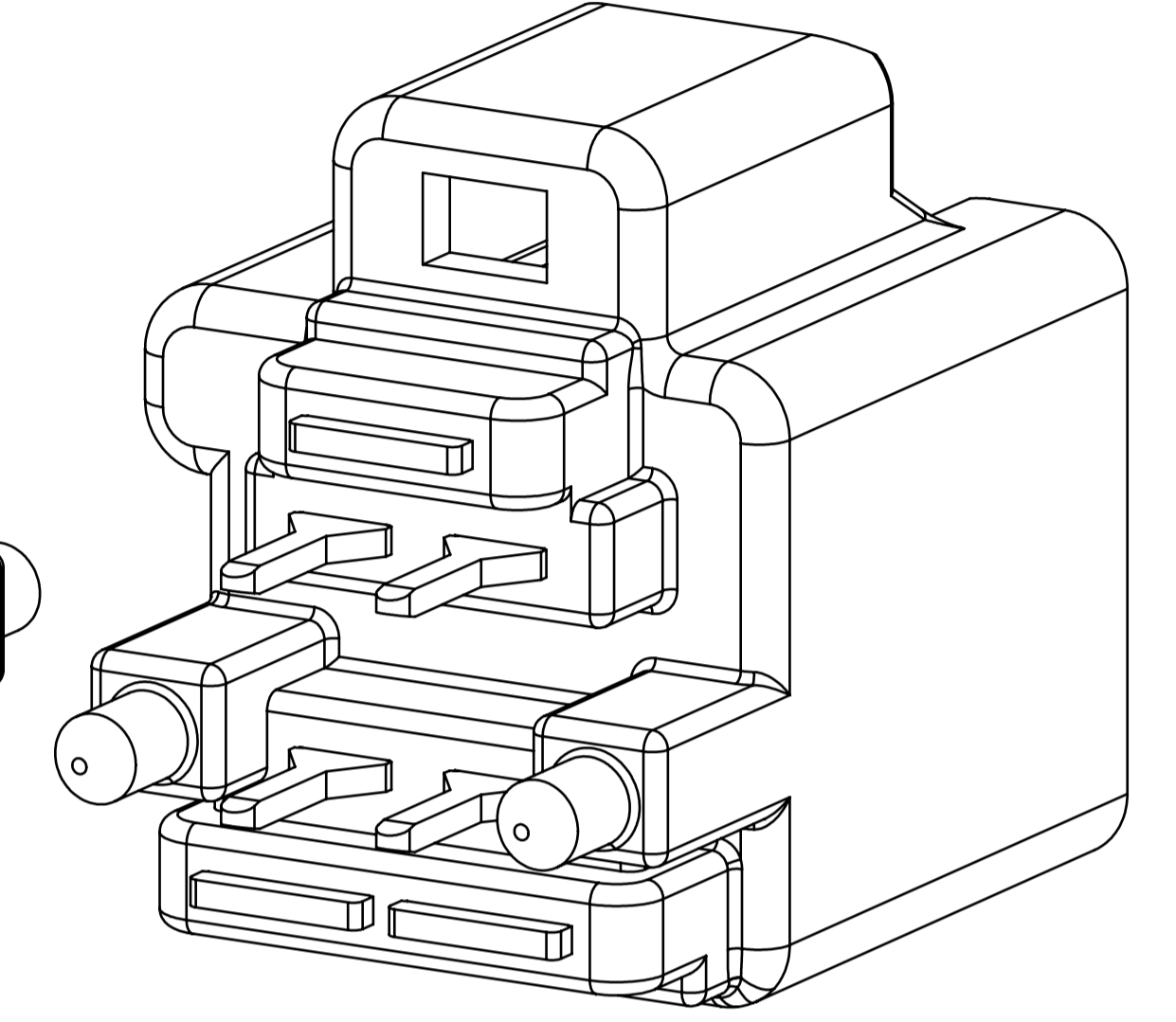
TABLE 1		SUB-ASSEMBLY PART NUMBER	NO.	PART NUMBER	PART NAME	MATERIAL	COLOR	QUANTITY
		7225-4385-30	①	7125-4385-30	4P 2.8mm UNSEALED MALE (VERTICAL) HEADER HOUSING	PS-ST-GF30	BLACK	1
			②	7125-1628-02	2.8mm PCB (VERTICAL) MALE TERMINAL	COPPER ALLOY	N/A	4
			③	7173-5111-02	4P 2.8mm UNSEALED PCB (VERTICAL) MALE SOLDER BAR	COPPER ALLOY	N/A	3



KEEP OUT VIEW



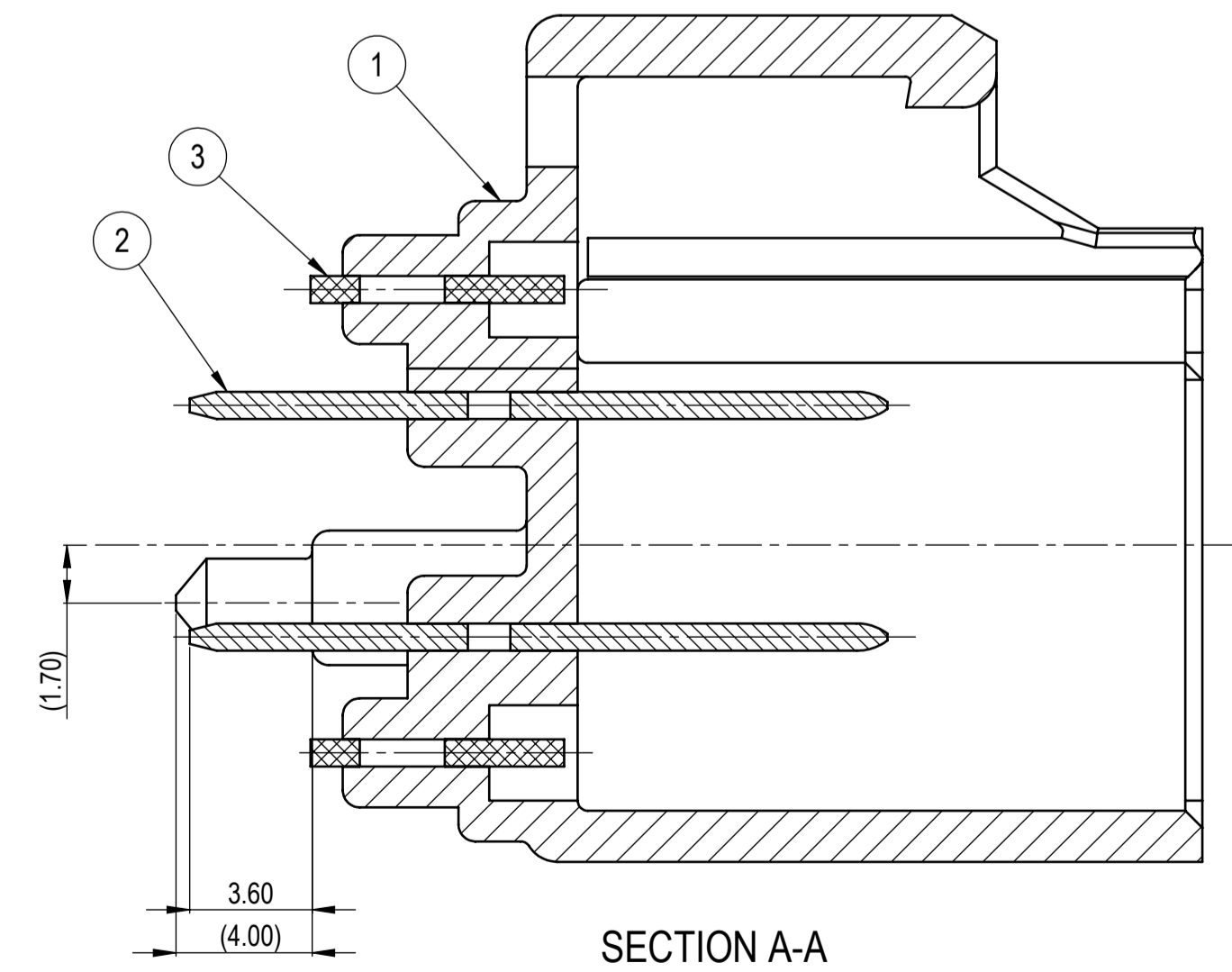
FRONT ISOMETRIC VIEW



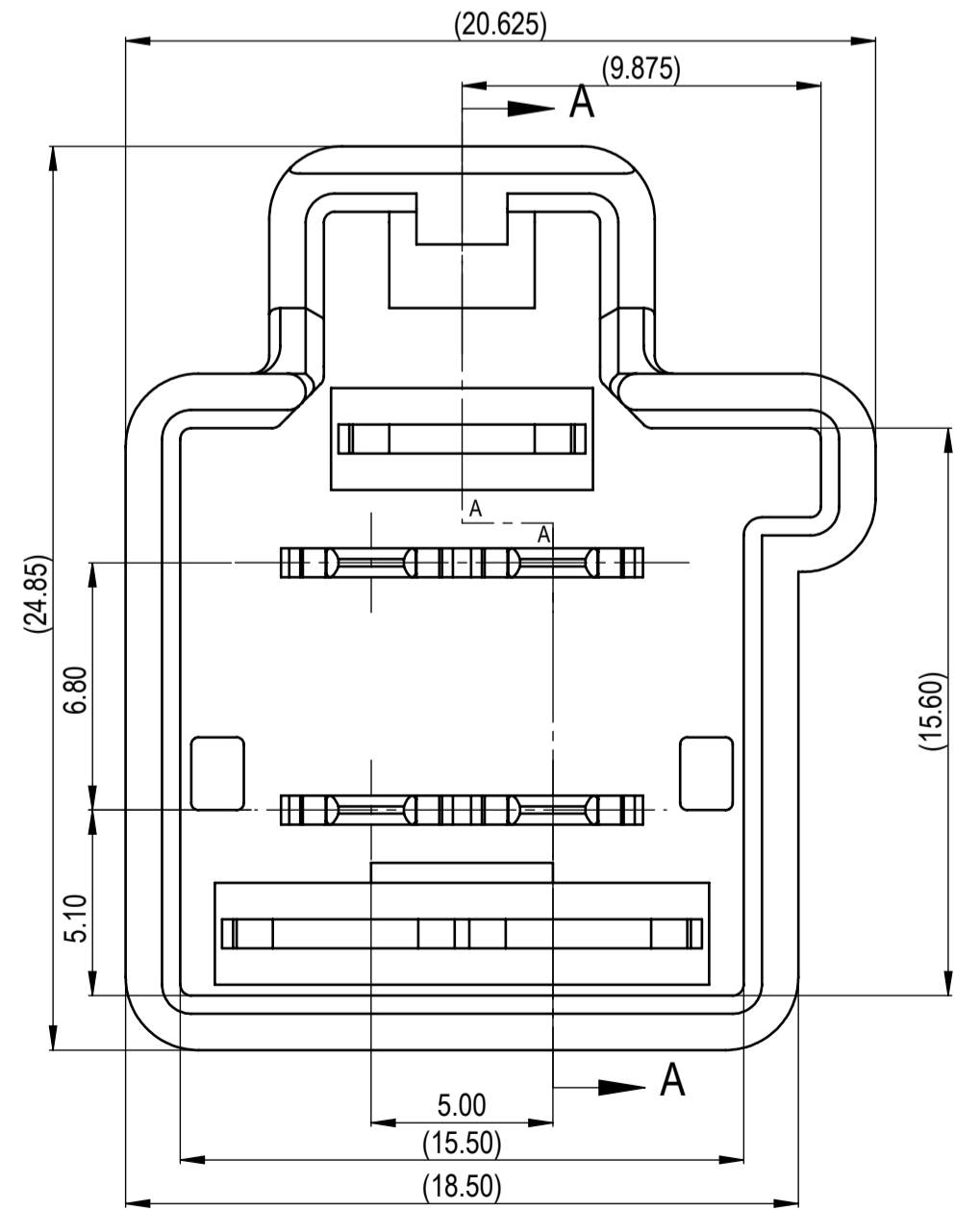
REAR ISOMETRIC VIEW

NOTES:

- PARTS MUST BE PURCHASED FROM YAZAKI.
- PARTS MUST BE FREE OF FLASH AND IMPERFECTIONS THAT AFFECT FUNCTION.
- MATING PART NUMBER: 7283-6446-30
- PART TO SATISFY USCAR-2, REVISION 6, FEBRUARY 2013 (T2/S1/V1).
- PART TO COMPLY WITH YPES-31-038 REQUIREMENTS.
- THIS DRAWING IS TO BE USED FOR INTERNAL YAZAKI PSW SUBMISSION.
- AFTER BEING PRESSED IN, THE TERMINALS AND SOLDER BARS MUST BE FREE OF PLASTIC RESIN. TERMINALS AND SOLDER BARS MUST NOT BE LOOSE AFTER BEING INSERTED UNDER PRESSURE.



SECTION A-A



CUSTOMER		CUSTOMER DWG. NO.		MTRL SPEC.		SEE TABLE		TREAT. & FIN.		N/A	
OFFICE		YNA		TRIAL PART NO.		NAME		4P 2.8mm UNSEALED MALE			
VENDOR								(VERTICAL) HEADER ASSEMBLY			
VENDOR NO.						PART NO.		7225-4385-30, ETC			
DWG TYPE		R		DWG SOURCE		7225-4385-30/M		DWG DATE		05-10-2021	
APPROVED		CHECKED		CHECKED		DESIGN		DRAWN			
JACKSON MATHESON		JULIO GONZALEZ		02-18-2019		06-14-2021		DWG NO.		7225-4385-30:R	
										YAZAKI CORPORATION	

GENERAL TOLERANCE												
A	±0.15	±0.20	±0.30	±0.50	±0.75	R5 MAX	R10 MAX	R20 MAX	R20 OVR	ANGLE	ECCENT	
B	±0.20	±0.30	±0.55	±0.95	±1.40	±0.20	±0.30	±0.50	±2.50	±3°	0.1	
C	±0.30	±0.50	±0.80	±1.40	±2.00					±3°	0.15	
	SPECIFIED										MASS	(6.47) g

05-06-2021	NEW	C21-A387	JG
LET	DATE	REVISION RECORD	CHKD

ISSUE MARK