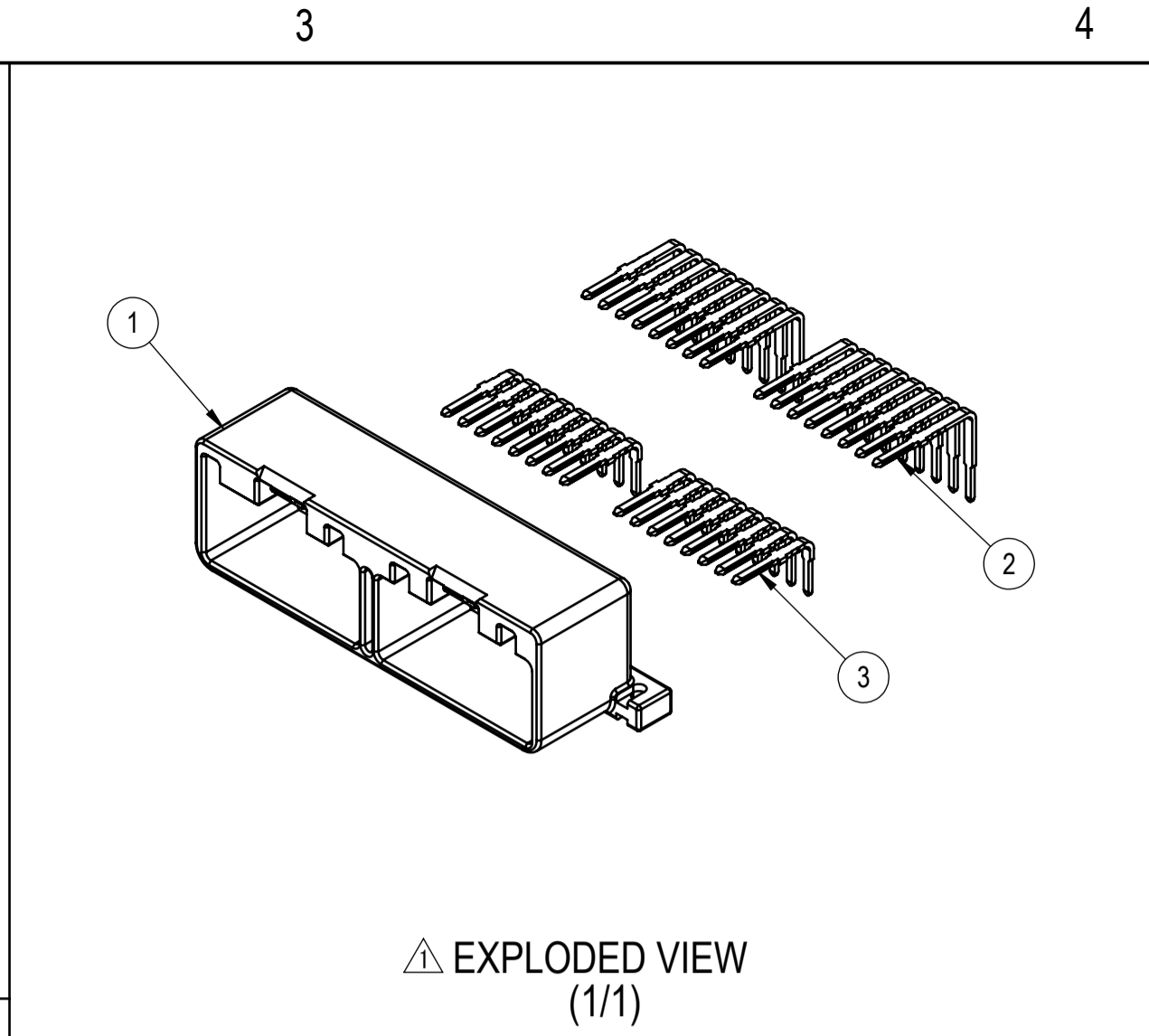
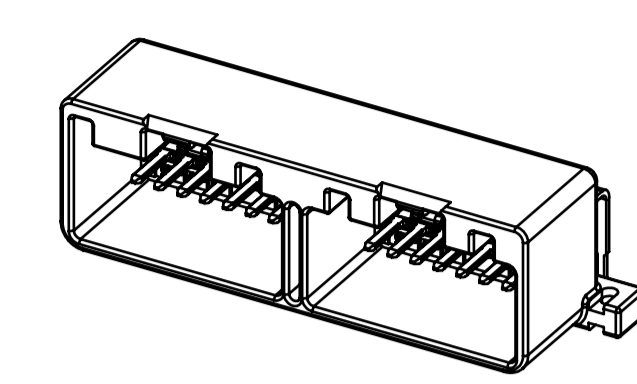


PCB FOOTPRINT

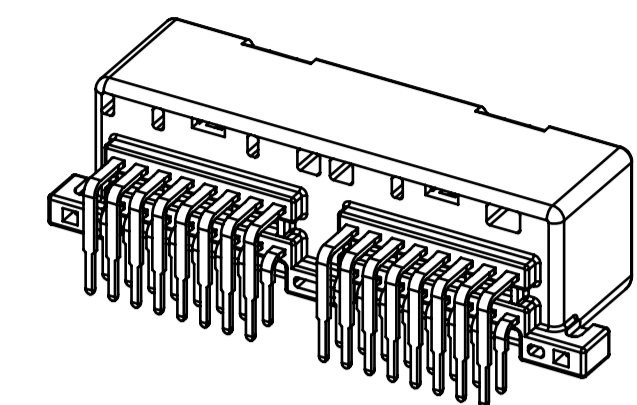


EXPLODED VIEW (1/1)

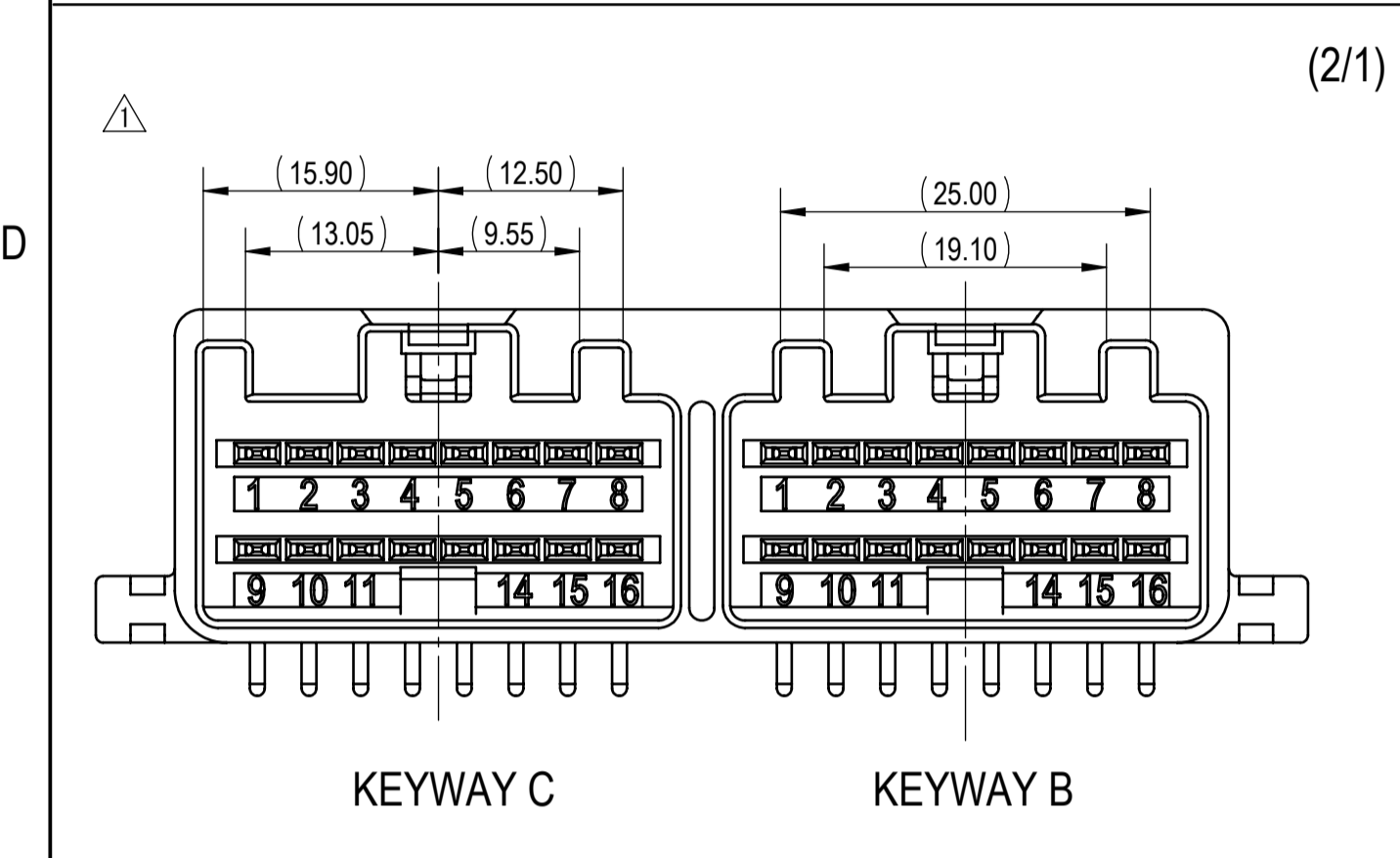
ASSEMBLY PART NUMBER	NO.	PART NUMBER	PART NAME	MATERIAL	△ COLOR	QUANTITY
7386-5687-3R	①	7186-5687-30	32P 1.5 MALE HEADER HOUSING	PPA-GF16	BLACK	1
	②	7114-4170-R2	1.5 PCB MALE TERMINAL LEAD-FREE	BRASS	-	16
	③	7114-4171-R2	1.5 PCB MALE TERMINAL LEAD-FREE	BRASS	-	16



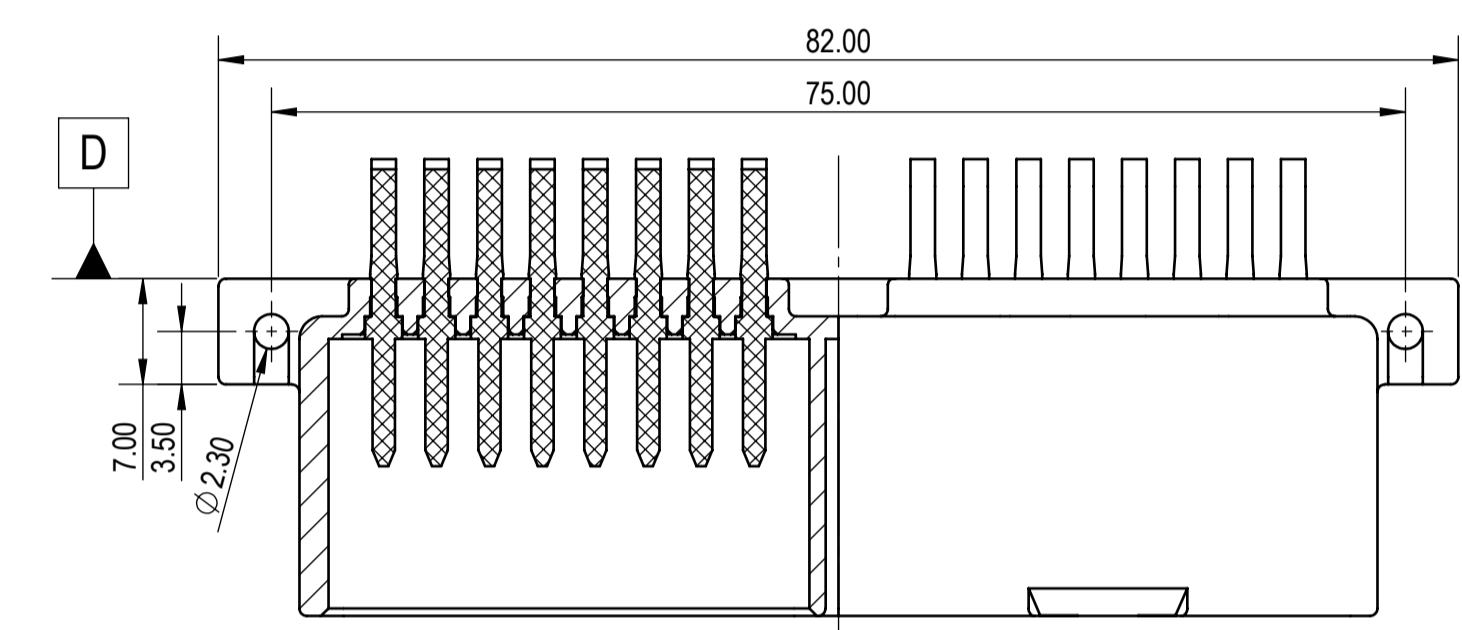
FRONT ISOMETRIC VIEW (1/1)



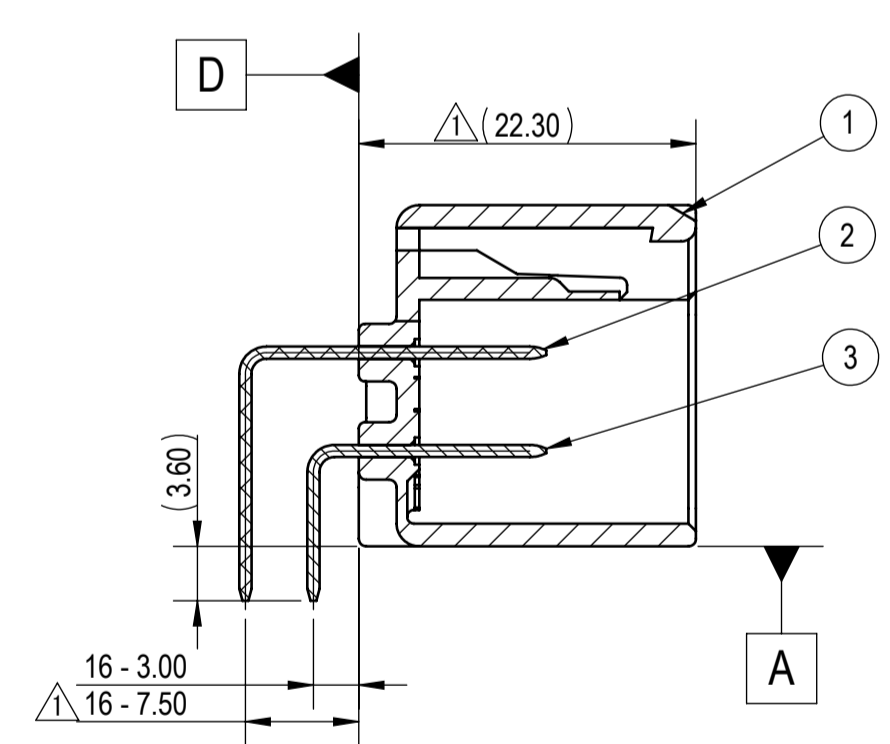
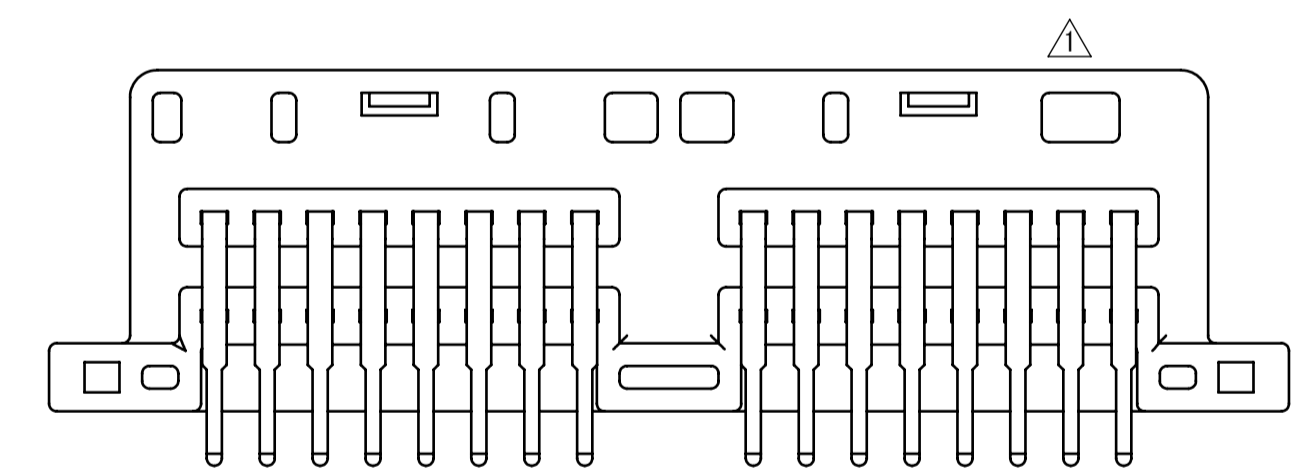
REAR ISOMETRIC VIEW (1/1)



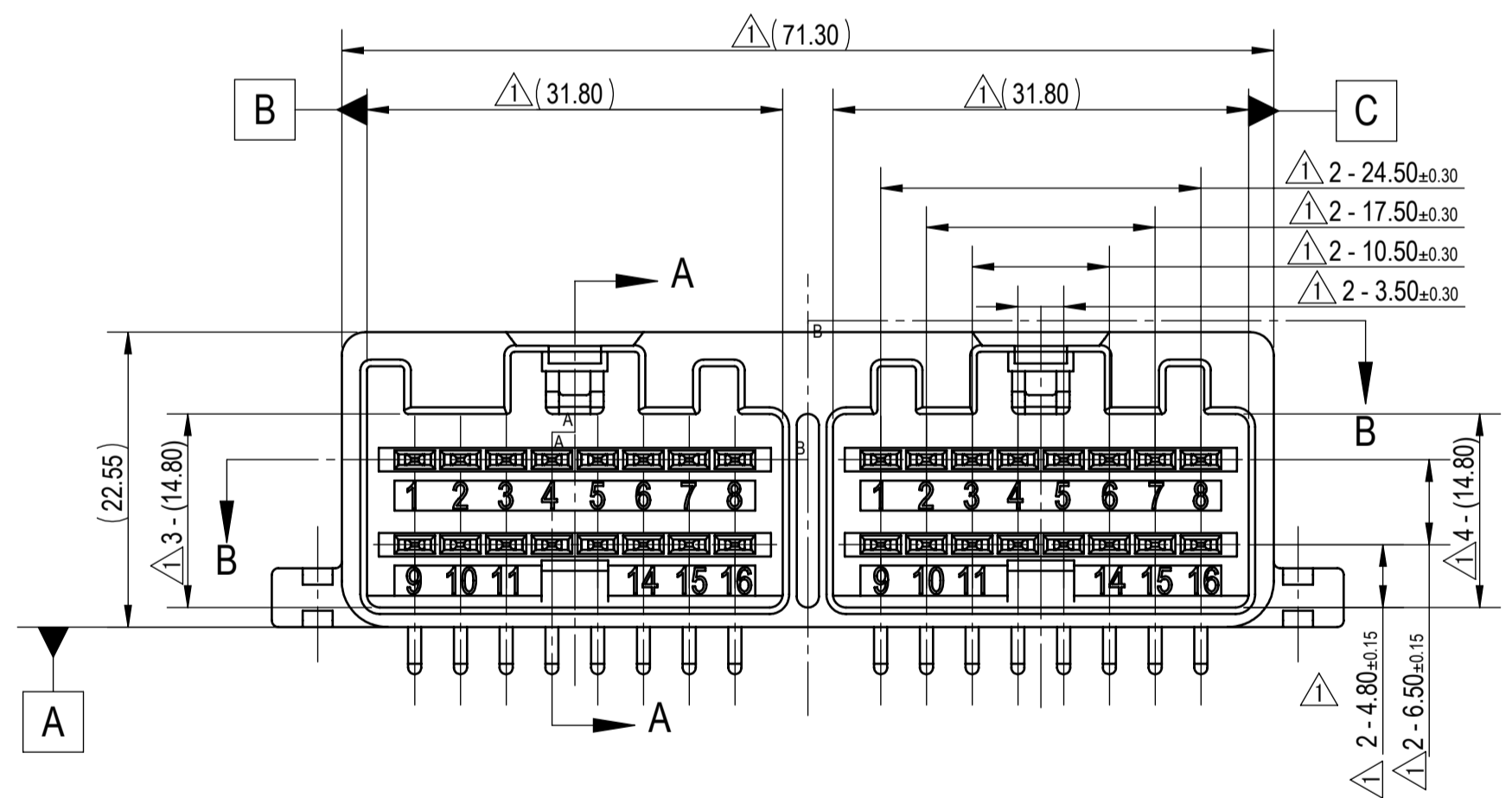
KEYWAY C KEYWAY B



SECTION B-B



SECTION A-A



NOTES:

- PARTS MUST BE PURCHASED FROM YAZAKI.
- PARTS MUST BE FREE OF FLASH AND IMPERFECTIONS THAT AFFECT FUNCTION.
- MATING PART NUMBER: KEYWAY B: 7283-6456-90, 7283-6456-80
KEYWAY C: 7283-3585-40
- PART SATISFIES USCAR-2, REV. 6, FEB 2013, (T2V1/S1/MF3).
- PART TO COMPLY WITH YPES-31-038 REQUIREMENTS.
- THIS DRAWING IS TO BE USED FOR INTERNAL YAZAKI PSW SUBMISSION.
- AFTER BEING PRESSED IN, THE TERMINALS MUST BE FREE OF PLASTIC RESIN.
- TERMINALS MUST NOT BE LOOSE AFTER BEING INSERTED UNDER PRESSURE.
- RECOMMENDED FASTENING TAPPINGS SCREW PER JIS B1122 & B1007; M3X1.6 PANHEAD SECOND CLASS.
- RECOMMENDED TIGHTENING TORQUE FOR SCREW ASSEMBLY : 0.65Nm~0.80Nm

△	01-30-2019	REVISED FORM, NOTES, DIMENSIONS, ADDED MASS, VIEWS & COLOR COLUMN	C19-A080	I.M.
-	02-26-2016	NEW	C16-A065	K.P.
LET	DATE	REVISION RECORD	NO.	CHKD

GENERAL TOLERANCE											
A	±0.15	±0.20	±0.30	±0.50	±0.75	R5 MAX	R10 MAX	R20 MAX	R20 OVR	ANGLE ±3°	ECCENT 0.1
B	±0.20	±0.30	±0.55	±0.95	±1.40	±0.20	±0.30	±0.50	±2.50	±3°	0.1
C	±0.30	±0.50	±0.80	±1.40	±2.00					±3°	0.15
SPECIFIED MASS (15.60) g											

CUSTOMER		CUSTOMER DWG NO.		MATL SPEC.	SEE TABLE	TREAT. & FIN.	N/A				
OFFICE	YNA	TRIAL PART NO.		NAME 32P 1.5mm MALE HEADER ASSEMBLY							
VENDOR				LEAD-FREE COMPLIANT							
VENDOR NO.				DWG TYPE	DWG SOURCE	DWG DATE	UNIT	SCL	ANGLE	PART NO.	7386-5687-3R
				R	7386-5687-3R:M	02-26-2016	mm	2/1	3	CH. CODE	
				APPROVED	CHECKED	CHECKED	DESIGN	DRAWN		DWG NO.	7386-5687-3R-R
							RYAN BARTLETT	ISABEL MUNIZ		YAZAKI CORPORATION	
							10-30-2015	02-06-2019			